

**State of Illinois**  
Patrick Quinn, Governor

**Illinois Gaming Board**  
Aaron Jaffe, Chariman  
Mark Ostrowski, Administrator



**ILLINOIS GAMING BOARD**

**2013**

**ANNUAL**

**REPORT**

# TABLE OF CONTENTS

The Illinois Gaming Board	Page 2	Page 23	Par-A-Dice Gaming Corporation
Illinois Gaming Board Members	Page 3	Page 27	Rock Island Boatworks, Inc.
Riverboat Gaming in Illinois	Page 6	Page 31	Empress Casino – Joliet, Corporation
Riverboat Year in Review 2013	Page 7	Page 35	Southern Illinois Riverboat Casino Cruises, Inc.
Video Gaming in Illinois	Page 10	Page 39	Harrah’s Casino Cruises Joliet
Video Gaming Year in Review 2013	Page 11	Page 43	Hollywood Casino - Aurora, Inc.
Illinois Gaming Revenues	Page 12	Page 47	Casino Queen, Inc.
Statistics	Page 13	Page 51	Elgin Riverboat Resort
Sources of Revenue	Page 14	Page 55	Rivers Casino
Distribution of Gaming Taxes	Page 15	Page 59	Glossary of Terms
Five Year History	Page 16	Page 60	Illinois Gaming Board Approved Games
Summary of Illinois Riverboat Data	Page 17	Page 61	Illinois Licensed Suppliers
Gaming Win by Jurisdiction	Page 18	Page 62	Illinois Gaming Board Executive Staff
Alton Gaming Company	Page 19	Page 63	Illinois Gaming Board Organizational Chart
		Page 64	Illinois Gaming Board Fiscal Year Budget

# THE ILLINOIS GAMING BOARD

The Riverboat Gambling Act was enacted in February 1990, making Illinois the second State in the nation to legalize riverboat gambling. The Act established the Illinois Gaming Board (IGB or Board) and authorized it to grant up to ten casino licenses. On September 11, 1991, the first riverboat casino began operation in Alton. Currently all ten licenses are active. In 2009 the Legislature passed the Video Gaming Act, which established video gaming in Illinois under the jurisdiction of the Board. To view a copy of either Act and the Board's Adopted Rules, visit the Board's website at [www.igb.state.il.us](http://www.igb.state.il.us).

The Board consists of five members appointed by the Governor and confirmed by the Senate. The Board administers a regulatory and tax collection system for casino and video gambling in Illinois. The Board also has comprehensive law enforcement responsibilities associated with casino and video gambling operations in Illinois.

The Board's staff conducts audit, legal, enforcement, investigative, operational and financial analysis activities to ensure the integrity of riverboat and video gambling in Illinois as mandated by the Acts. The Board ensures the integrity of the gambling operations through the regulatory oversight and the licensing of gaming operations and personnel. The Board's staff conducts a criminal background and financial investigation of riverboat and video gaming personnel to ensure that an applicant has no felony convictions or criminal history which would make him or her ineligible for licensure.

The Board's staff includes approximately 258 agency employees, including a detail of 101 Illinois State Police employees. Individuals may not be employed by the Board if their spouse, parent or child is an official of, or has a financial interest in or a financial relationship with, any entity or individual engaged in gambling operations in Illinois.



# ILLINOIS GAMING BOARD MEMBERS

## JUDGE AARON JAFFE, CHAIRMAN



**JUDGE AARON JAFFE** is serving his second term as Chairman of the Illinois Gaming Board. He was first appointed to the Board on March 21, 2005 and reappointed by Governor Patrick Quinn on October 24, 2011. Judge Jaffe was in private practice from 1953 to 1985. He served in the Illinois House of Representatives (1971 to 1985) where he Chaired both the Judiciary Committee and the Rape Study Committee, and Co-chaired the Legislative Investigating Committee. Other legislative assignments included the Rules, Public Utilities, Environment, Elementary and Secondary Education, Higher Education,

Human Resources, Agriculture and Revenue committees. Judge Jaffe was the principal sponsor of legislation that resulted in major changes in the law such as the present Marriage and Dissolution of Marriage Act, the new Criminal Sexual Assault Statutes and the 1984 Parentage Act. While serving as the House Judiciary Committee Chair, Judge Jaffe aided in enacting present statutes such as the Business Corporation, Independent Administration Probate, and Illinois Freedom of Information Acts. He received six Best Legislator Awards from the Independent Voters of Illinois, including the Ethel Parker Award and three Legislator of the Year Awards from the Illinois Education Association. Judge Jaffe also received Environmental Awards from the Illinois Environmental Council for every term he served in the Legislature. He received a Citation from the Committee on Courts and Justice and the Jane Adams Award from the Illinois Women's Political Caucus. Judge Jaffe served as a Cook County Circuit Court Judge from 1985 until his retirement in 2004, serving in both the Law and Chancery Divisions. In the Law Division, Judge Jaffe adjudicated personal injury, medical malpractice and product liability cases. In the Chancery Division, Judge Jaffe presided over corporate and partnership disputes, contract matters, insurance litigation, class actions, zoning cases, administrative law matters, condominium disputes, church litigation, real estate litigation and other complex equitable cases. In 1990, he was awarded Judge of the Year in Domestic Relations Division by his fellow Judges. Judge Jaffe is the founding President of the Jewish Judges of Illinois and has received mediation training at the National Judicial College. He was a Member of Chief Justice Warren Burger's Prison Industries Task Force and also taught and was an adjunct professor at the University of Loyola School of Law. He has been a speaker and lecturer many times during his career. Judge Jaffe's term expires July 1, 2016.



# ILLINOIS GAMING BOARD MEMBERS

## LEE A. GOULD



**LEE A. GOULD** is the managing partner of Gould & Pakter Associates LLC, an accounting and business consulting firm. Mr. Gould is an attorney and a Certified Public Accountant, and has more than 30 years of experience performing valuations of closely held businesses, financial damages determinations and forensic accounting investigations. Mr. Gould provides business valuation and business valuation consulting services to trial lawyers and their clients. He performs business valuations for family law matters, shareholder dissent and oppression litigation, estate and gift tax purposes and buy/sell agreements. Mr. Gould performs lost profit and financial damages calculations in commercial litigation matters including breach of contract and business interruption claims. Mr. Gould performs forensic accounting analyses to assist in locating unreported or hidden assets, determining the source of funds used to acquire assets, determining the reasonableness of contract and/or project related costs and investigating claims of misappropriation. He has provided litigation consulting services in a variety of industries including manufacturing, distribution, retail, construction, financial services, professional service corporations and real estate. He also designs and presents continuing education programs for the American Institute of Certified Public Accountants, the Illinois CPA Society, the Chicago Bar Association, the American Bar Association and law firms. He is a Certified Fraud Examiner; Certified in Financial Forensics; and an accredited Business Valuator. In addition, Mr. Gould is a member of the Gastro Intestinal Research Foundation, where he serves as Executive Vice President in 2011 and as a Member of Board of Directors from 2007 to the present. He is president (2012), ex-officio member (2011) of the Board of Directors of the CPA Endowment Fund of Illinois. Mr. Gould is a member of the Illinois CPA Society where he served as the Chairman 2009 of the Board of Directors and has held a variety of leadership positions over the years. He has been a member of the Business Valuation Conference Task Force (2001 through 2010), a Member of the Family Law Conference Task Force (2006 and 2007), and a Member of Business Valuation Special Interest Group. He is a member of the Advisory Board of the Schiller DuCanto and Fleck Family Law Center Advisory Board. In addition he is a member of the American Institute of Certified Public Accountants; the Association of Certified Fraud Examiners; the American Society of Appraisers (candidate member), the American Bar Association, the Illinois State Bar Association and the Chicago Bar Association. Mr. Gould's term expires July 1, 2015.

## MICHAEL HOLEWINSKI



**MICHAEL HOLEWINSKI** is the President of Ace Industries, a Chicago manufacturer and metal finisher. He currently serves as Vice Chairman of the Board of Directors of the Illinois Manufacturers' Association and will become Board Chairman in 2012. He is also an attorney licensed to practice law in the State of Illinois. From 1974 through 1978, he was a Representative in the Illinois General Assembly. As a State Representative, he sponsored and passed into law two of the first anti-redlining laws in the U.S. aimed at curbing abuses in the banking and mortgage banking industries. He served as Chairman of the Committee on Illinois Government and was a member of the Illinois Commission on Children, the Statewide Health Coordinating Council and the Chicago Economic Development Commission. From 1983 to 1987, he was Administrative Assistant to Mayor Harold Washington and in that capacity chaired the Mayor's Public Safety and Regulatory Subcabinet. He had lead responsibility for many of the Mayor's major initiatives including those directed at Gang Crimes and Ethics Reform. He also led Mayor Washington's reform of the taxi cab industry in Chicago. As President of Ace Industries, Mr. Holewinski has guided the company through a series of strategic acquisitions. The Company has received numerous awards for its efforts to protect the environment. Mr. Holewinski's term expires July 1, 2016.

# ILLINOIS GAMING BOARD MEMBERS

## MARIBETH VANDER WEELE



**Maribeth Vander Weele** has overseen thousands of investigations and analyses in the public and private sectors. A former Inspector General, Ms. Vander Weele is founder of the Vander Weele Group and its online research division, Sagerity Investigative Intelligence. In the private sector, Ms. Vander Weele has consulted for American manufacturers in China, Malaysia, Singapore and Mexico. Remotely, her firm has worked on matters in the Middle East, Chile, Brazil, and Europe. Clients range from Fortune 500 companies and hedge funds

to federal agencies and educational institutions. Ms. Vander Weele began her career as a news reporter. In 1994, she authored *Reclaiming Our Schools, the Struggle for Chicago School Reform*, based on her investigative reporting for the *Chicago Sun-Times*. The book became the roadmap for the reform of the \$3.8 billion Chicago Public School system, which was then mired in allegations of corruption. In 1995, Ms. Vander Weele joined the turnaround team for the system, spearheading integrity initiatives that enabled the system - for the first time in more than two decades - to achieve an investment-grade rating that permitted the launch of a multi-billion construction program. Ms. Vander Weele directly managed departments involving investigations, internal audit, and security. During this time, the Illinois state legislature and the school system adopted and implemented dozens of recommendations from Ms. Vander Weele's book. In 1998, Mayor Richard M. Daley appointed her as Inspector General of the school system, where she managed a staff that investigated thousands of allegations of employee and vendor misconduct. A Certified Protection Professional and a Certified Inspector General, Ms. Vander Weele became President of the Illinois Association of Inspectors General during that time. For her work in education, Ms. Vander Weele has been profiled in the *Wall Street Journal*, *Teacher Magazine*, *Education Week*, and in the 1998 book, *Extraordinary Ordinary Women Making a Difference*. Her work is cited in the book, *Battling Corruption in America's Public Schools*. In 2009, Illinois Governor Patrick Quinn appointed Ms. Vander Weele to an investigatory panel to address abuses in the University of Illinois admissions process. Ms. Vander Weele has lectured at Harvard University, the National Business Roundtable, the Association of Inspectors General, the National Association of Local Government Auditors, the Illinois CPA Society, the Chicago Chapter of the Association of Certified Fraud Examiners, the Public Broadcasting System, the National Education Writers Association, the Golden Apple Foundation, Kellogg Graduate School of Management at Northwestern University, the University of Chicago Graduate School of Business, and in many other forums nationwide and in Canada. She has received honors and earned membership in Count-Me-In for Women's Economic Independence, Athena PowerLink, and the Clinton Foundation. Ms. Vander Weele served as a board member for Time Dollar Tutoring, a Chicago not-for-profit organization that provided tutoring and computers to disadvantaged youth. Ms. Vander Weele is a graduate of Wheaton College in Wheaton, Illinois. Ms. Vander Weele's term expires July 1, 2014.



# RIVERBOAT GAMING IN ILLINOIS

Each riverboat gaming operation (casino) is authorized to offer up to 1,200 gaming positions, consisting of a mix of electronic gaming devices and table games. In 1999 the Act was amended to permit all casinos to permanently moor at docksites, without conducting cruises on any waterway. Patrons must be 21 years of age to be admitted to the gambling areas of each casino. The Act requires that all wagering in the casinos be cashless. The Act imposes two taxes on casinos: Casino Admissions Tax and Casino Privilege or Wagering Tax.

Effective August 23, 2005, the Legislature set the admissions tax at \$2 per person for patrons of Jumer's Casino Rock Island. For all other casinos the admissions tax is set at \$3 per person. Revenues from the casino admissions tax are deposited into the State Gaming Fund, a special fund in the state treasury. From each admission, \$1 goes to the host community where a casino is located and the remainder is distributed from the State Gaming Fund in the same manner as revenues collected from the wagering tax (see below).

The privilege or wagering tax is collected as a percentage of receipts from gaming play. Wagering tax revenues are deposited into the State Gaming Fund. They are computed as a percentage of Adjusted Gross Receipts (AGR), defined as gross receipts less winnings paid to bettors. The majority of revenues in the State Gaming Fund are transferred to the Education Assistance Fund, a general fund which can be used for any purpose relating to public education. Five percent of the AGR from each casino is distributed to the hosting local government. Monies deposited into the State Gaming Fund are also used to fund the Gaming Board's administrative and operational expenses. The General Assembly also provided that specified percentages of the revenues from the 10th Riverboat gaming license (Rivers Casino in Des Plaines) shall be paid Horse Racing Equity Fund ( 15 percent total AGR and a one-time distribution of \$23 million on July 1, 2013). Also two percent of total AGR from Rivers Casino is designated to the Cook County criminal justice system. Starting on July 1, 2013 an annual transfer of \$1,600,000 from the State Gaming Fund to the Chicago State University Education Improvement Fund. Also in 2013 the Legislature amended the Riverboat Gambling Act to include a monthly transfer of \$5,530,000 from the State Gaming Fund into the School Infrastructure Fund and a one-time transfer of \$92,000,000 from the State Gaming Fund into the School Infrastructure Fund.

Over the years the Legislature has amended the wagering tax from a flat 20 percent to a graduated rate. Effective July 1, 2005 the wagering tax is as follows:

- 15 percent of AGR up to and including \$25 million;
- 22.5 percent of the AGR in excess of \$25 million but not exceeding \$50 million;
- 27.5 percent of AGR in excess of \$50 million but not exceeding \$75 million;
- 32.5 percent of AGR in excess of \$75 million but not exceeding \$100 million;
- 37.5 percent of AGR in excess of \$100 million but not exceeding \$150 million;
- 45 percent of AGR in excess of \$150 but not exceeding \$200 million;
- 50 percent of AGR in excess of \$200 million



# RIVERBOAT YEAR IN REVIEW 2013

## RIVERBOAT GAMBLING 2013

In 2013 the IGB continued to regulate the 10 riverboat casino operations in Illinois along with all related licensees.

- In February, the Board renewed the owners' license of Harrah's Metropolis Casino for a term of 4 years expiring in February 2017.
- In July, the Board renewed the owners license Casino Queen (East St. Louis) for a term of 4 years expiring in July 2017.

The Board approved issuance of the following new supplier's licenses:

- House Advantage, LLC  
(one year expiring in May 2014)
- Ditronics Financial Services, LLC  
(one year expiring in August 2014).
- GLP Capital, L.P.  
(one year expiring in September 2014).

The Board renewed the Suppliers' licenses of:

- AGS Illinois, LLP  
(4 years expiring in January 2017);
- The United States Playing Card Co.  
(4 years expiring in February 2017);
- SHFL Entertainment, Inc.  
(4 years expiring in July 2017);
- Micro Gaming Technologies, Inc.  
(4 years expiring in August 2017);
- Western Money Systems, Inc. and A.C. Coin & Slot Service Co., Inc. both **surrendered** their Suppliers licenses.

The Board issued a total of 2,054 Occupational licenses, including 1,585 Level 3 Occupational licenses, 714 Level 2 Occupational licenses, and 23 Level 1

Occupational licenses. In the same period, the Board denied 58 Occupational license applications.

"Key persons" are defined under Gaming Board rules as persons able to control, or exercise significant influence over, the management, assets, or operating policies of an owner or supplier licensee. During 2013 the Board approved 69 individuals and positions as Key Persons.

## CASINO SOCIAL INVESTMENT

The Board has acted as a strong advocate on behalf of increased participation by minorities and women in the gaming industry. Specifically, in connection with the license approval and renewal process, the Board reviews the efforts of all owner licensees in hiring minority and women employees, providing opportunities for employee training and promotion, establishing outreach efforts towards women and minority contractors, and making charitable contributions to community organizations (both in terms of funds and volunteer hours).

With encouragement of the Board, supplier diversity networking fairs have been established throughout the State, with most of the state's casinos serving as hosts. During 2013, two major diversity networking events have taken place. On April 11-12, the 46th Annual Chicago Business Opportunity Fair, organized by the Chicago Minority Business Development Council, was held at Navy Pier in Chicago. The Illinois Casino Gaming Association ("ICGA"), an umbrella trade group of Illinois casinos, sponsored and participated in the fair for the seventh year in a row and hosted a booth.

# RIVERBOAT YEAR IN REVIEW 2013

## CASINO SOCIAL INVESTMENT CONTINUED...

On August 21-22, the Illinois State Black Chamber of Commerce hosted a convention at the Par-A-Dice Casino and Hotel in Peoria. ICGA is a member of the Black Chamber of Commerce, and participated in presentations, seminars, and by hosting an informational table. Purchasing agents from each of the Illinois casinos were present at these events, as well as many local government officials and members of the community, making them invaluable forums for minority vendors seeking new business opportunities in gaming. Representatives of the Illinois Gaming Board also attended.

## CASINO DISCIPLINARY ACTIONS

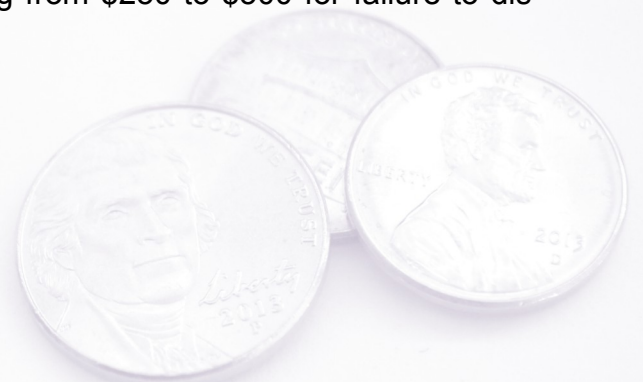
In 2013 As part of its continuing efforts to maintain the integrity of riverboat gaming, the Board issued a total of 35 disciplinary complaints against licensees.

### Supplier licensees:

- In February, the Board imposed a fine of \$5,000 against Patriot Gaming & Electronics, Inc., for failing to timely file its annual submission to the Board.
- In June, the Board imposed a fine of \$20,000 against Spielo International Canada, ULC, for failing to timely file its annual submission with the Board.
- In August, the Board imposed a fine of \$20,000 against Spielo International USA, LLC, for failing to timely file its annual submission with the Board.

### Occupational licensees:

- Revoked 13 occupational licenses based on convictions of crimes or work-related infractions involving dishonesty.
- Imposed fines on 17 occupational licensees ranging from \$250 to \$500 for failure to disclose changes in material information to the Board.





# RIVERBOAT YEAR IN REVIEW 2013

## CASINO SELF-EXCLUSION PROGRAM FOR PROBLEM GAMBLERS

In 2002 the Board adopted a voluntary self-exclusion program for problem gamblers. The program was created to help compulsive gamblers regain control of their lives by giving those persons the ability to ban themselves from Illinois casinos. The Board maintains a confidential database that contains identifying information about each person who enrolls in the Program. Key information is shared with the State's casinos to ensure that those who have self-excluded cannot cash checks or obtain credit at an Illinois casino. In addition, the State's casinos are prohibited from sending marketing material to persons listed on the Board's Self-Exclusion List.

At the time of enrollment in the program, a Self-Excluded person agrees not to enter or gamble in any casino in Illinois. A Self-Excluded person also agrees to donate all chips, tokens and vouchers in his or her possession to one of three Department of Human Services (DHS) designated agencies if they are caught returning to an Illinois casino. Those organizations include The Illinois Council on Problem Gambling, the Illinois Institute for Addiction Recovery and the Outreach Foundation for Problem and Compulsive Gamblers. By the end of 2013, persons who enrolled in the Program and subsequently returned to Illinois casinos had donated approximately \$1,428,595 in gambling proceeds to the three DHS designated organizations.

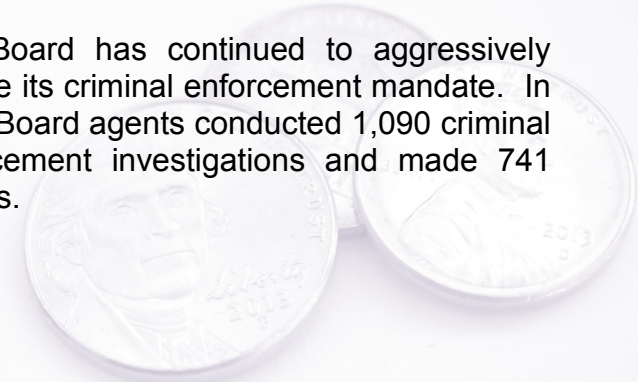
There has been a steady increase in the number of enrollees since the program was implemented. Those wishing to enroll in the program must fill out the required application forms available at twenty-one locations in Illinois and six in Iowa. In 2013, a total of 802 persons enrolled in the Self-Exclusion Program bringing the total enrollment to 10,439 at the end of the year.

For a complete listing of enrollment sites, visit the Board's website or call 1-877-YOU-QUIT during regular business hours. Those outside of Illinois must dial (312) 814-8832.



## CRIMINAL ENFORCEMENT PROCEEDINGS

The Board has continued to aggressively pursue its criminal enforcement mandate. In 2013 Board agents conducted 1,090 criminal enforcement investigations and made 741 arrests.





# VIDEO GAMING IN ILLINOIS

The Video Gaming Act authorizes the installation of up to five licensed video gaming terminals (VGTs) in licensed establishments where liquor is served for consumption on the premises, as well as in licensed fraternal establishments, licensed veterans establishments and licensed truck stops. All licenses are issued by the IGB, and the holding of a valid liquor license does not, in itself, guarantee qualification for a video gaming license. Under the Video Gaming Act a licensed truck stop does not need to have a liquor license to participate in video gaming but must sit on at least three acres of land with a convenience store, have separate diesel islands for fueling commercial vehicles, sells over 10,000 gallons of diesel or biodiesel fuel a month and have parking spaces for commercial motor vehicles.

In order to determine how much money is wagered and won, and to ensure the integrity of video gaming, all licensed VGTs are monitored by the IGB through a Central Communications System (CCS). The CCS provides real-time communication with and control over every licensed VGT in Illinois. The CCS was constructed and is being maintained by Scientific Games International.

Income generated from VGTs is divided among the State, local government entity where the establishment is located, terminal operator, location and Scientific Games. The State receives 30 percent of the net terminal income generated from each licensed VGT. Of the state's portion, five percent goes to the local government entity. Of the remaining 70 percent, Scientific Games receives 0.7275 percent of the net terminal income as compensation for building and maintaining the CCS. The remaining income is divided equally between the terminal operator and location.

The Video Gaming Act gives local communities and counties the option to pass an ordinance to opt out of video gaming. By the end of 2013, a total of 878 communities and counties have enacted ordinances that specifically allow video gaming. The IGB knows of 195 additional communities that have a gambling prohibition in their ordinance – either specifically passed in response to the Video Gaming Act or an ordinance that was in effect prior to the Act.

---

## VIDEO GAMING 2013

By the close of 2013, video gaming expanded to 3,271 locations throughout Illinois with a total of 13,374 active VGTs. Video gaming in Illinois has proved to be both a regulatory and technical success as well as an important adjunct to State revenues.

The Board continues to receive and reviewed hundreds of applications for various video gaming licenses. In connection with the applications, Board investigators conducted thousands of investigations of individuals and entities. In 2013 the IGB approved new locations at an average rate of over 300 per month. New VGTs have been installed in 2013 at an average rate of nearly 1,000 per month.



# VIDEO GAMING YEAR IN REVIEW 2013

## NEW LEGISLATION

During 2013, Governor Patrick Quinn signed into law several items of legislation that amended the provisions of the Video Gaming Act. The Board has been promptly implementing these amendments. Notably, among the changes, new legislation allows for the CCS vendor to also hold a manufacturer or distributor license; authorizes video gaming play by electronic cards or vouchers; removes the prohibition of licensed locations situated within 1,000 feet of an off-track betting facility; and amends the definition of “licensed establishment” to include establishments which operate on either a for-profit or non-profit basis.

## LICENSE APPLICATIONS

The Board has conducted vigorous licensing activity during calendar year 2013, including approvals, denials, revocations, and withdrawals:

	Licensed or Renewed	Denied	Revoked	Withdrawn
Locations	2,845	88	0	109
Terminal Operators	9	7	0	0
Manufacturers	1	1	0	1
Distributors	2	1	0	0
Suppliers	3	1	0	2
Technicians	55	3	0	4
Terminal Handlers	589	30	0	4
Totals	3504	131	0	122

The Board also acted on several requests for administrative hearing and requests to reapply for a license within one year from the original date of denial of the license.

In addition, the Board has vigorously investigated persons with financial or institutional ties to applicants. It has initiated 6,750 investigations of Persons with Significant Influence or Control (“PSICs”), and 524 investigations on Statutorily Identified Persons (“SIPs”) and Other Interested Persons (“OIPs”).

## 2013 VIDEO GAMING DISCIPLINARY ACTION

In 2013 the Board issued five disciplinary complaints fining video gaming licensees for a conduct in violation of the Video Gaming Act and Rules.

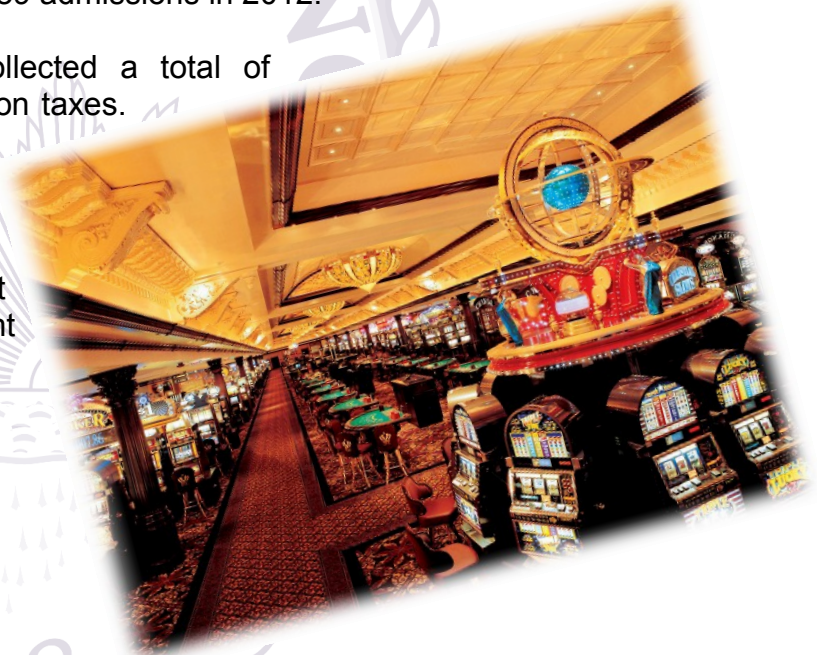
# 2013 ILLINOIS GAMING REVENUES

## 2013 CASINO REVENUES AND ADMISSIONS

The total AGR from all riverboat casinos for 2013 amounted to \$1.551 billion, a decrease of 5.3 percent from the \$1.638 billion AGR in 2012. Admissions in 2013 were 14,891,745 a 7.8 percent decrease from the 16,157,689 admissions in 2012.

In 2013 the State Gaming Fund collected a total of \$536,699,138 in wagering and admission taxes.

The State share of taxes collected was \$444,205,433 a decrease of 6.7 percent from the State share of taxes collected in 2012. Of that amount, \$92.5 million was paid to host communities, an decrease of 5.7 percent from the \$98.1 paid in 2012.



## 2013 VIDEO GAMING REVENUES

As 2013 came to a close the state collected a total of \$90,171,553.51 in Net Terminal Income taxes from the 13,374 active video gaming terminals operating in Illinois. The State share of taxes collected was \$75,142,032.53. The host communities where those machines are located received \$15,029,520.98 in taxes collected per the revenue sharing component of the Act. The year-end net terminal income was \$300,681,363.29. The Board posts monthly revenue figures on its website for both casino and video gambling.



# THE STATE

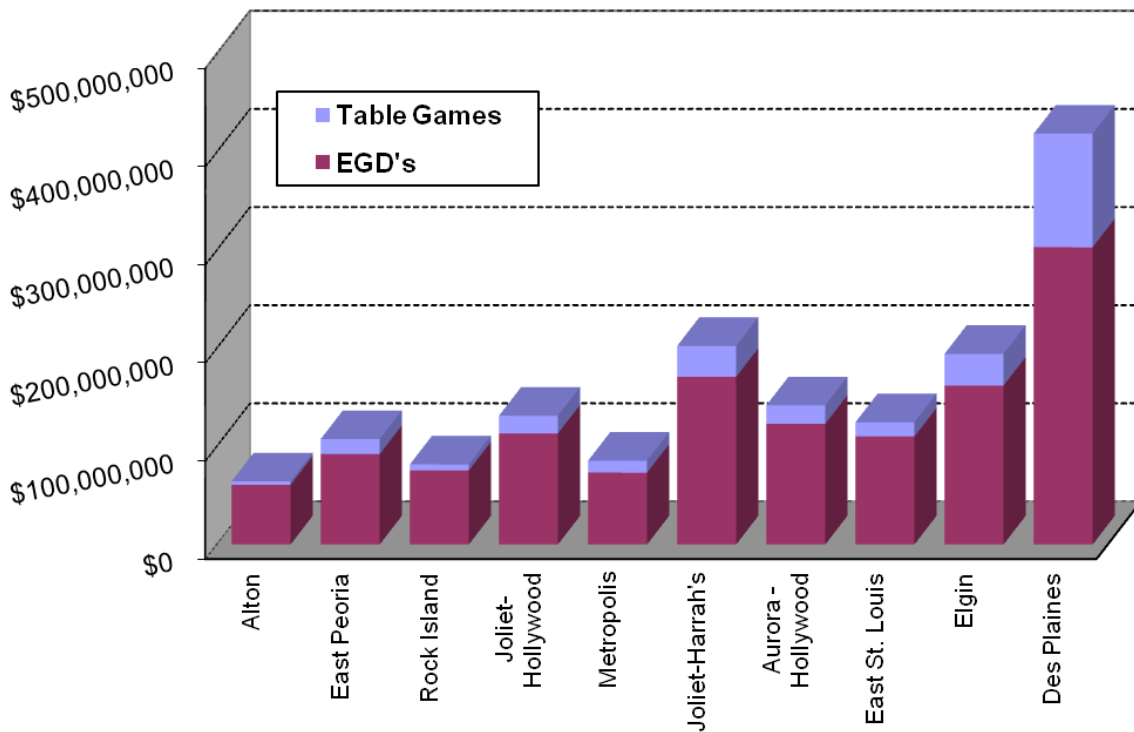
## 2013 STATISTICS

	2012	2013	% Change
<b>Gross Receipts</b>	\$1,638,167,885	\$1,551,311,772	-5.30%
<b>Adjusted Gross Receipts (AGR)</b>	\$1,638,648,102	\$1,552,039,190	-5.29%
<b>Number of Table Games</b>	287	275	-4.18%
<b>Table Drop</b>	\$1,596,484,983	\$1,507,112,612	-5.60%
<b>Table AGR</b>	\$261,811,426	\$267,846,398	2.31%
<b>AGR/Table/Day</b>	\$2,492.45	\$2,672.85	7.24%
<b>Table Game AGR to Drop %</b>	16.4%	17.8%	8.54%
<b>Number of EGD's</b>	11,030	11,275	2.22%
<b>EGD Handle</b>	\$15,619,684,373	\$14,526,003,622	-7.00%
<b>EGD AGR</b>	\$1,376,356,459	\$1,283,465,374	-6.75%
<b>AGR/EGD/Day</b>	\$340.94	\$312.38	-8.38%
<b>EGD AGR to Handle %</b>	8.8%	8.8%	0.00%
<b>Admissions</b>	16,157,869	14,891,745	-7.84%
<b>AGR Per Admission</b>	\$101.39	\$104.17	2.74%
<b>Total Tax</b>	\$574,336,421	\$536,699,138	-6.55%
<b>Wagering Tax</b>	\$527,161,053	\$493,226,411	-6.44%
<b>Admission Tax</b>	\$47,175,368	\$43,472,727	-7.85%
<b>10th License Payment</b>	\$4,657,534		
<b>Other Revenues</b>	\$2,072,917	\$104,247,078	4929.00%

# SOURCES OF REVENUE

## TABLE GAMES AND ELECTRONIC GAMING DEVICES

Docksite	Total AGR	Table Games	% of Total	EGD	% of Total
Alton Belle	\$64,253,526	\$3,390,055	5.3%	\$60,863,471	94.7%
E. Peoria Par-A-Dice	107,412,644	15,313,091	14.3%	92,099,553	85.7%
Casino Rock Island	81,548,137	6,191,363	7.6%	75,356,774	92.4%
Joliet-Hollywood	131,183,854	18,046,151	13.8%	113,137,703	86.2%
Metropolis-Harrah's	85,361,134	12,184,019	14.3%	73,177,115	85.7%
Joliet-Harrah's	202,369,258	31,439,068	15.5%	170,930,190	84.5%
Aurora-Hollywood	141,710,408	18,715,361	13.2%	122,995,047	86.8%
E. St. Louis Casino Queen	124,492,607	14,467,127	11.6%	110,025,480	88.4%
Elgin Grand Victoria	194,272,314	32,305,528	16.6%	161,966,786	83.4%
Des Plaines Rivers Casino	418,707,890	115,794,635	27.7%	302,913,255	72.3%
<b>Total</b>	<b>\$1,551,311,772</b>	<b>\$267,846,398</b>	<b>17.3%</b>	<b>\$1,283,465,374</b>	<b>82.7%</b>



### REVENUE IN DOLLARS



# DISTRIBUTION OF GAMING TAXES

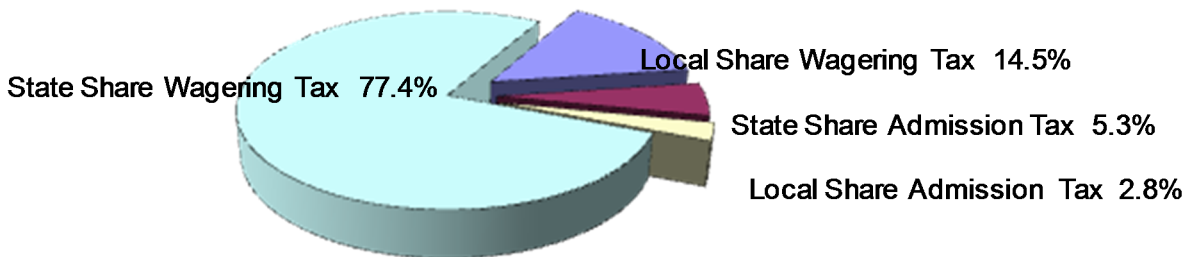
## DISTRIBUTIONS TO LOCAL GOVERNMENTS

	2009	2010	2011	2012	2013	% Change 13 to '12
<b>Alton</b>	\$5,369,552	\$4,903,732	\$4,598,773	\$4,425,285	\$3,966,860	-10.36%
<b>East Peoria</b>	7,087,935	7,073,458	6,984,629	7,020,467	6,459,369	-7.99%
<b>Rock Island</b>	4,779,745	5,354,352	5,625,634	5,691,791	5,280,398	-7.23%
<b>Joliet</b>	23,573,344	22,975,414	21,810,943	20,825,968	19,583,121	-5.97%
<b>Metropolis</b>	6,964,396	6,621,939	5,559,086	5,652,802	4,946,695	-12.49%
<b>Aurora</b>	11,720,974	10,546,682	10,157,711	8,968,877	8,350,381	-6.90%
<b>E. St. Louis</b>	9,623,667	8,596,621	8,455,040	8,427,048	7,918,236	-6.04%
<b>Elgin</b>	16,766,095	16,479,803	14,730,214	12,275,581	11,326,522	-7.73%
<b>Des Plaines</b>			10,819,591	24,802,456	24,662,123	-0.57%
<b>Total</b>	<b>\$85,885,708</b>	<b>\$82,552,001</b>	<b>\$88,741,621</b>	<b>\$98,090,275</b>	<b>\$92,493,705</b>	<b>-5.71%</b>

### STATE SHARE OF GAMING TAXES

### LOCAL SHARE OF GAMING TAXES

Distribution	STATE SHARE			Distribution	LOCAL SHARE		
	Admission Tax	Wagering Tax	Total		Admission Tax	Wagering Tax	Total
<b>2012</b>	\$31,017,499	\$445,228,647	\$476,246,146	<b>2012</b>	\$16,157,869	\$81,932,406	\$98,090,275
<b>2013</b>	\$28,580,982	\$415,624,451	\$444,205,433	<b>2013</b>	\$14,891,745	\$77,601,960	\$92,493,705
<b>% Change</b>	<b>-7.86%</b>	<b>-6.65%</b>	<b>-6.73%</b>	<b>% Change</b>	<b>-7.84%</b>	<b>-5.29%</b>	<b>-5.71%</b>



## DISTRIBUTION OF GAMING TAXES - 2013

# FIVE YEAR HISTORY

	2009	2010	2011	2012	2013
<b>Licensees</b>	9	9	* 10	* 10	* 10
<b>AGR</b>	\$1,428,923,092	\$1,373,421,897	\$1,477,600,520	\$1,638,167,885	\$1,551,311,772
<b>Table Games</b>	\$174,891,436	\$171,545,773	\$205,698,256	\$261,811,426	\$267,846,398
<b>EGD</b>	\$1,254,031,656	\$1,201,876,124	\$1,271,902,264	\$1,376,356,459	\$1,283,465,374
<b>Admissions</b>	14,418,760	13,834,414	14,801,944	16,157,869	14,891,745
<b>AGR Per Adm</b>	\$99.10	\$99.28	\$99.82	\$101.39	\$104.17
<b>Total Tax</b>	\$495,395,953	\$466,073,453	\$489,422,453	\$574,336,421	\$536,699,138
<b>Wagering Tax</b>	\$453,396,211	\$425,952,813	\$446,348,998	\$527,161,053	\$493,226,411
<b>Admission Tax</b>	\$41,999,742	\$40,120,640	\$43,073,455	\$47,175,368	\$43,472,727
<b>State Share</b>	\$409,510,245	\$383,521,452	\$400,680,832	\$476,246,146	\$444,205,433
<b>Local Share</b>	\$85,885,708	\$82,552,001	\$88,741,621	\$98,090,275	\$92,493,705

\* Des Plaines Rivers Casino opened July 18, 2011.



# SUMMARY OF ILLINOIS RIVERBOAT DATA

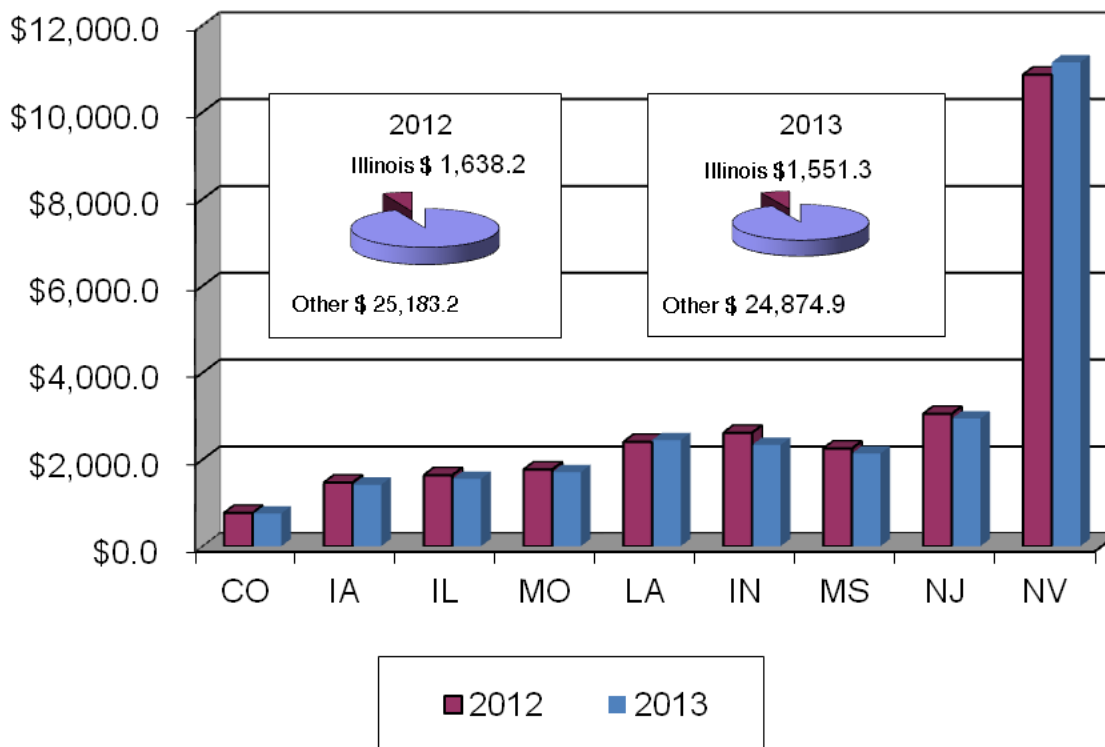
Month	Admission Total	AGR Total	Taxes Collected		Win Per Admission
			State	Local	
1991 Total	308,783	14,942,909	2,550,219	1,055,928	48.39
1992 Total	4,079,819	226,334,794	38,030,038	15,396,559	55.48
1993 Total	10,679,490	605,684,483	101,532,162	40,963,714	56.71
1994 Total	20,367,119	979,551,111	167,299,786	69,344,675	48.09
1995 Total	24,835,833	1,178,311,827	201,582,607	83,751,424	47.44
1996 Total	25,211,329	1,131,491,531	194,935,059	81,785,905	44.88
1997 Total	24,972,139	1,054,573,793	183,158,208	77,700,829	42.23
1998 Total	24,813,818	1,106,751,600	256,782,080	80,117,488	44.60
1999 Total	21,991,689	1,362,931,231	328,665,137	90,132,196	61.97
2000 Total	19,014,939	1,658,004,361	410,328,901	101,884,222	87.19
2001 Total	18,808,281	1,783,958,166	447,228,898	107,975,415	94.85
2002 Total	18,821,582	1,831,550,836	555,702,432	110,399,391	97.31
2003 Total	16,597,552	1,709,943,480	617,797,595	102,060,624	103.02
2004 Total	15,331,021	1,717,991,115	700,930,079	101,230,939	112.06
2005 Total	15,323,166	1,798,912,344	644,462,903	105,282,514	117.40
2006 Total	16,180,360	1,923,528,409	717,881,351	112,358,413	118.88
2007 Total	16,525,437	1,983,386,762	718,157,094	115,727,277	120.02
2008 Total	14,637,054	1,568,727,252	473,648,638	93,095,279	107.18
2009 Total	14,418,760	1,428,923,092	409,510,245	85,885,708	99.10
2010 Total	13,834,414	1,373,421,897	383,521,452	82,552,001	99.28
2011 Total	14,801,944	1,477,600,520	400,680,832	88,741,621	99.82
Jan	1,235,530	126,978,147	15,465,260	7,581,493	102.77
Feb	1,380,557	145,004,939	22,589,360	8,627,057	105.03
Mar	1,448,907	146,607,009	29,759,057	8,800,017	101.18
Apr	1,345,746	142,399,010	34,251,850	8,455,037	105.81
May	1,380,572	137,807,004	38,700,722	8,270,881	99.82
June	1,360,628	145,215,881	45,489,816	8,631,698	106.73
July	1,457,967	142,712,967	47,345,283	8,585,056	97.88
Aug	1,407,883	129,048,564	43,000,751	7,860,938	91.66
Sept	1,341,826	137,692,035	50,932,580	8,227,129	102.62
Oct	1,292,400	128,566,558	48,689,381	7,723,773	99.48
Nov	1,227,897	124,028,188	47,531,679	7,440,384	101.01
Dec	1,277,956	132,107,583	52,490,407	7,886,812	103.37
2012 Total	16,157,869	1,638,167,885	476,246,146	98,090,275	101.39
Jan	1175205	123,141,042	15,130,335	7,333,941	104.78
Feb	1168885	124,350,415	18,904,583	7,388,438	106.38
Mar	1397559	149,058,307	29,324,189	8,856,646	106.66
Apr	1277396	134,503,215	31,967,451	8,003,831	105.29
May	1326388	137,732,198	37,874,486	8,221,172	103.84
June	1260926	131,399,244	39,405,844	7,825,199	104.21
July	1330027	132,116,950	43,554,053	7,928,339	99.33
Aug	1315899	135,152,660	46,069,016	8,081,941	102.71
Sept	1215437	125,458,407	44,622,206	7,498,515	103.22
Oct	1192713	123,008,498	46,537,670	7,335,358	103.13
Nov	1168320	120,740,848	46,083,571	7,219,229	103.35
Dec	1062990	114,649,988	44,732,029	6,801,096	107.86
2013 Total	14,891,745	1,551,311,772	444,205,433	92,493,705	104.17

# GAMING WIN BY JURISDICTION

## FOR CALENDAR YEARS 2012 AND 2013

(Millions)

Jurisdiction	2012		2013		Year Over Year
	Total Win	% of Total	Total Win	% of Total	% Change
Colorado **	\$766.3	2.9%	\$753.5	2.9%	-1.7%
Iowa	\$1,466.8	5.5%	\$1,416.7	5.3%	-3.4%
Illinois	\$1,638.2	6.1%	\$1,551.3	5.9%	-5.3%
Missouri	\$1,768.8	6.6%	\$1,707.6	6.4%	-3.5%
Louisiana	\$2,403.7	9.0%	\$2,444.8	9.3%	1.7%
Indiana	\$2,613.9	9.7%	\$2,331.7	8.8%	-10.8%
Mississippi	\$2,251.1	8.3%	\$2,136.6	8.1%	-5.1%
New Jersey	\$3,051.9	11.4%	\$2,939.2	11.1%	-3.7%
Nevada	\$10,860.7	40.5%	\$11,144.8	42.2%	2.6%
<b>Total</b>	<b>\$26,821.4</b>		<b>\$26,426.2</b>		<b>-1.5%</b>



Sources: RubinBrown LLP

\*\* 2012 win reported for Colorado this year differs from last year as a result of adjustments



# ALTON GAMING COMPANY



## Argosy Casino Alton

1 Piasa Street - Alton, Illinois 62002 - Telephone: 800 336-7568

### QUICK FACTS

- First Licensed: October 1991
- Renewed: November 2011
- Next Renewal: October 2015
- Waterway: Mississippi River
- Gambling Space: 23,000 sq. ft.
- Employees: 423
- Admissions: 753,296
- AGR per Admission: \$85.30
- Average Daily Admissions: 2,098
- Authorized gambling positions: 1,103
- Total AGR: \$64,253,526
- State share of taxes: \$11,592,630
- Local share of taxes: \$3,966,860

# ARGOSY CASINO ALTON

## CALENDAR YEAR COMPARISON

	2012	2013	% Change
<b>Number of Days Operational</b>	366	359	-1.91%
<b>Gross Receipts</b>	\$70,952,955	\$64,253,526	-9.44%
<b>Adjusted Gross Receipts (AGR)</b>	\$70,975,584	\$64,271,282	-9.45%
<b>Admissions</b>	876,506	753,296	-14.06%
<b>AGR Per Admission</b>	\$80.95	\$85.30	5.37%
<b>Gambling Sq. Ft.</b>	23,000	23,000	0.00%
<b>Number of Table Games</b>	15	14	-6.67%
<b>Table Drop</b>	\$18,590,927	\$17,739,430	-4.58%
<b>Table AGR</b>	\$3,384,611	\$3,390,055	0.16%
<b>AGR/Table/Day</b>	\$616.50	\$674.50	9.41%
<b>Table Game AGR to Drop %</b>	18.2%	19.1%	4.95%
<b>Number of EGD's</b>	1,059	1,008	-4.82%
<b>EGD Handle</b>	\$869,676,300	\$758,125,352	-12.83%
<b>EGD AGR</b>	\$67,568,344	\$60,863,471	-9.92%
<b>AGR/EGD/Day</b>	\$174.33	\$168.19	-3.52%
<b>EGD AGR to Handle %</b>	7.8%	8.0%	2.56%
<b>Total Tax</b>	\$17,772,805	\$15,559,490	-12.45%
<b>State Share of Taxes</b>	\$13,347,520	\$11,592,630	-13.15%
<b>Local Share of Taxes</b>	\$4,425,285	\$3,966,860	-10.36%



# ARGOSY CASINO ALTON

## TABLE GAMES DETAIL

Table Games	Average # of Units	Total Table Drop	Adjusted Gross Receipts	AGR to Drop %
Blackjack	3	\$636,309	\$119,920	18.8%
Craps	2	5,109,296	1,133,693	22.2%
Roulette	1	1,423,513	341,538	24.0%
Mississippi Stud	1	1,114,525	253,705	22.8%
Blackjack 21+3	5	7,569,918	1,232,792	16.3%
Three Card Poker	2	1,885,869	308,407	16.4%
<b>TOTAL</b>	<b>14</b>	<b>\$17,739,430</b>	<b>\$3,390,055</b>	<b>19.1%</b>

## ELECTRONIC GAMES DETAIL

EGD	Average # of Units	Total EGD Handle	Adjusted Gross Receipts	AGR to Handle %
\$0.01	625	\$324,382,332	\$37,561,580	11.6%
\$0.05	67	99,997,824	5,339,795	5.3%
\$0.25	161	166,783,903	8,302,738	5.0%
\$0.50	17	6,763,362	486,416	7.2%
\$1	116	123,797,781	7,663,484	6.2%
\$5	16	23,765,050	898,803	3.8%
\$10	3	8,563,650	419,780	4.9%
\$25	3	4,071,450	190,875	4.7%
<b>TOTAL</b>	<b>1,008</b>	<b>\$758,125,352</b>	<b>\$60,863,471</b>	<b>8.0%</b>

# ARGOSY CASINO ALTON

Month	Adm	AGR	Taxes Collected		Win Per
	Total	Total	State	Local	Adm
1991 Total	202,938	10,747,204	1,815,019	740,298	52.96
1992 Total	816,731	49,738,494	8,277,505	3,303,656	60.90
1993 Total	1,154,765	60,102,081	10,170,077	4,159,869	52.05
1994 Total	2,604,072	89,073,919	15,965,160	7,057,768	34.21
1995 Total	2,519,604	81,547,899	14,751,789	6,596,999	32.37
1996 Total	2,312,551	72,431,296	13,177,245	5,934,116	31.32
1997 Total	2,052,723	62,321,530	11,400,953	5,168,800	30.36
1998 Total	2,183,444	68,081,277	11,986,946	5,571,817	31.18
1999 Total	1,885,769	84,893,590	15,558,572	6,120,330	45.02
2000 Total	1,701,350	112,070,751	22,854,836	7,310,265	65.87
2001 Total	1,718,223	121,911,560	25,785,295	7,812,735	70.95
2002 Total	1,656,892	118,768,441	27,056,183	7,596,178	71.68
2003 Total	1,461,515	109,083,084	31,830,915	6,915,011	74.64
2004 Total	1,410,579	107,331,901	34,383,139	6,774,624	76.09
2005 Total	1,448,043	112,885,004	29,928,859	7,097,896	77.96
2006 Total	1,469,301	121,690,377	35,727,800	7,554,349	82.82
2007 Total	1,438,188	125,701,589	34,351,895	7,724,803	87.40
2008 Total	1,182,856	90,689,307	19,217,179	5,722,030	76.67
2009 Total	1,158,824	84,206,140	17,351,651	5,369,552	72.67
2010 Total	1,035,058	77,352,471	15,222,818	4,903,732	74.73
2011 Total	943,678	73,064,474	13,919,827	4,598,773	77.43
Jan	68,365	5,452,636	682,016	341,008	79.76
Feb	74,825	6,188,194	768,600	384,300	82.70
Mar	77,447	6,392,608	794,459	397,229	82.54
Apr	71,342	6,126,060	755,885	377,942	85.87
May	74,279	5,826,965	1,105,124	365,369	78.45
June	73,256	6,042,859	1,204,430	375,518	82.49
July	81,777	6,214,484	1,251,577	392,641	75.99
Aug	77,684	6,214,335	1,242,479	388,287	80.00
Sept	72,730	5,588,923	1,326,965	352,327	76.84
Oct	70,008	5,752,998	1,434,870	357,754	82.18
Nov	68,650	5,687,540	1,417,759	353,196	82.85
Dec	66,143	5,465,353	1,363,356	339,714	82.63
2012 Total	876,506	70,952,955	13,347,520	4,425,285	80.95
Jan	63,037	5,280,329	654,366	327,183	83.77
Feb	65,222	5,639,214	694,514	347,257	86.46
Mar	71,683	6,615,230	805,204	402,602	92.28
Apr	64,442	5,937,443	722,642	361,321	92.14
May	66,369	5,726,466	1,020,979	352,732	86.28
June	51,111	4,394,125	871,286	270,844	85.97
July	68,280	5,512,560	1,101,370	343,940	80.73
Aug	68,074	5,573,002	1,111,723	346,810	81.87
Sept	60,787	4,950,879	988,122	308,372	81.45
Oct	59,986	4,857,513	1,195,230	302,920	80.98
Nov	59,739	4,930,595	1,229,366	306,381	82.54
Dec	54,566	4,836,170	1,197,828	296,498	88.63
2013 Total	753,296	64,253,526	11,592,630	3,966,860	85.30

# PAR-A-DICE GAMING CORPORATION



## Par-A-Dice Casino

21 Blackjack Boulevard - East Peoria, Illinois 61611 - Telephone: 800 332-5634

### QUICK FACTS

- First Licensed: February 1992
- Renewed: March 2012
- Next Renewal: March 2016
- Waterway: Illinois River
- Gambling Space: 26,116 sq. ft.
- Employees: 762
- Admissions: 1,094,140
- AGR per Admission: \$98.17
- Average Daily Admissions: 2,998
- Authorized gambling positions: 1,200
- Total AGR: \$107,412,644
- State share of taxes: \$23,937,268
- Local share of taxes: \$6,459,369



# PAR-A-DICE CASINO

## CALENDAR YEAR COMPARISON

	2012	2013	% Change
<b>Number of Days Operational</b>	366	365	-0.27%
<b>Gross Receipts</b>	\$116,306,740	\$107,412,644	-7.65%
<b>Adjusted Gross Receipts (AGR)</b>	\$116,283,204	\$107,304,579	-7.72%
<b>Admissions</b>	1,206,307	1,094,140	-9.30%
<b>AGR Per Admission</b>	\$96.42	\$98.17	1.82%
<b>Gambling Sq. Ft.</b>	26,116	26,116	0.00%
<b>Number of Table Games</b>	26	25	-3.85%
<b>Table Drop</b>	\$76,995,182	\$77,651,139	0.85%
<b>Table AGR</b>	\$14,120,618	\$15,313,091	8.44%
<b>AGR/Table/Day</b>	\$1,483.88	\$1,678.15	13.09%
<b>Table Game AGR to Drop %</b>	18.3%	19.7%	7.65%
<b>Number of EGD's</b>	1,172	1,176	0.34%
<b>EGD Handle</b>	\$1,133,838,201	\$1,036,863,441	-8.55%
<b>EGD AGR</b>	\$102,186,122	\$92,099,553	-9.87%
<b>AGR/EGD/Day</b>	\$238.22	\$214.56	-9.93%
<b>EGD AGR to Handle %</b>	9.0%	8.9%	-1.11%
<b>Total Tax</b>	\$34,100,123	\$30,396,637	-10.86%
<b>State Share of Taxes</b>	\$27,079,656	\$23,937,268	-11.60%
<b>Local Share of Taxes</b>	\$7,020,467	\$6,459,369	-7.99%

# PAR-A-DICE CASINO

## TABLE GAMES DETAIL

Table Games	Average # of Units	Total Table Drop	Adjusted Gross Receipts	AGR to Drop %
Blackjack	5	\$10,067,357	\$1,710,478	17.0%
Craps	2	10,248,231	1,943,599	19.0%
Roulette	2	7,324,019	1,906,022	26.0%
CS Poker	1	2,010,275	523,453	26.0%
Let It Ride Poker	1	680,068	119,807	17.6%
Three Card Poker	1	2,675,800	762,466	28.5%
Mini-Baccarat	1	2,636,216	348,105	13.2%
Mississippi Stud	2	5,048,214	1,337,623	26.5%
Blackjack 21+3	4	30,418,742	5,366,757	17.6%
Poker	5	6,197,094	1,198,183	19.3%
Texas Holdem Bonus Poker	1	345,123	96,598	28.0%
<b>TOTAL</b>	<b>25</b>	<b>\$77,651,139</b>	<b>\$15,313,091</b>	<b>19.7%</b>

## ELECTRONIC GAMES DETAIL

EGD	Average # of Units	Total EGD Handle	Adjusted Gross Receipts	AGR to Handle %
\$0.01	719	\$461,162,364	\$53,759,813	11.7%
\$0.02	16	6,800,685	709,660	10.4%
\$0.05	98	95,154,329	6,820,858	7.2%
\$0.25	193	180,549,011	12,306,513	6.8%
\$0.50	2	1,434,874	110,101	7.7%
\$1	112	199,344,988	13,323,547	6.7%
\$5	27	66,728,075	3,392,719	5.1%
\$10	5	9,702,790	542,665	5.6%
\$25	4	15,986,325	1,133,677	7.1%
<b>TOTAL</b>	<b>1,176</b>	<b>\$1,036,863,441</b>	<b>\$92,099,553</b>	<b>8.9%</b>

# PAR-A-DICE CASINO

Month	Adm	AGR	Taxes Collected		Win Per
	Total	Total	State	Local	Adm
1991 Total	105,845	4,195,705	735,201	315,630	39.64
1992 Total	1,104,367	56,345,211	9,556,149	3,921,628	51.02
1993 Total	1,252,023	64,500,277	10,927,065	4,477,037	51.52
1994 Total	1,821,687	84,347,232	14,473,772	6,039,049	46.30
1995 Total	1,989,166	94,626,003	16,183,066	6,720,466	47.57
1996 Total	2,726,266	95,365,644	17,031,113	7,494,548	34.98
1997 Total	2,676,704	96,039,356	17,082,607	7,478,672	35.88
1998 Total	2,654,919	97,845,721	19,632,651	7,550,463	36.85
1999 Total	2,270,728	114,756,553	24,180,395	8,005,673	50.54
2000 Total	1,840,477	129,430,121	28,188,306	8,315,116	70.32
2001 Total	1,942,547	140,836,835	31,685,594	8,983,055	72.50
2002 Total	1,915,602	145,857,221	35,953,653	9,213,774	76.14
2003 Total	1,802,608	138,126,316	44,394,253	8,707,604	76.63
2004 Total	1,622,185	132,641,251	46,427,408	8,253,947	81.77
2005 Total	1,501,320	132,336,534	37,425,439	8,117,498	88.15
2006 Total	1,370,179	130,986,242	44,936,172	7,901,581	95.60
2007 Total	1,372,876	132,757,395	46,510,967	8,011,938	96.70
2008 Total	1,350,245	116,726,216	27,525,600	7,188,723	86.45
2009 Total	1,335,354	114,989,801	26,937,489	7,087,935	86.11
2010 Total	1,307,667	115,252,284	26,967,977	7,073,458	88.14
2011 Total	1,206,094	115,460,022	26,847,667	6,984,629	95.73
Jan	92,587	9,371,103	1,123,443	561,721	101.21
Feb	104,235	10,149,069	1,222,979	611,489	97.37
Mar	107,737	10,499,661	1,642,975	632,856	97.46
Apr	99,838	9,787,978	1,911,492	588,928	98.04
May	101,978	9,824,651	1,923,913	593,394	96.34
June	101,941	9,916,937	2,417,724	597,903	97.28
July	109,242	9,963,553	2,461,703	607,735	91.21
Aug	106,116	9,820,520	2,622,383	594,058	92.55
Sept	99,726	9,497,202	2,813,852	575,072	95.23
Oct	95,887	9,209,231	2,724,405	556,366	96.04
Nov	93,154	9,217,146	3,083,795	554,270	98.95
Dec	93,866	9,049,689	3,130,992	546,675	96.41
2012 Total	1,206,307	116,306,740	27,079,656	7,020,467	96.42
Jan	88,795	8,435,703	1,020,637	510,318	95.00
Feb	91,546	9,217,243	1,104,611	552,306	100.68
Mar	102,407	10,302,743	1,457,889	618,022	100.61
Apr	89,428	9,210,221	1,789,772	549,690	102.99
May	92,850	9,033,997	1,766,510	544,510	97.30
June	91,313	9,075,238	2,034,585	545,122	99.39
July	101,325	9,752,027	2,367,299	582,357	96.25
Aug	97,211	8,977,180	2,217,613	546,809	92.35
Sept	89,651	8,983,859	2,596,746	539,321	100.21
Oct	88,971	8,780,816	2,594,035	528,261	98.69
Nov	85,198	8,467,762	2,506,366	508,698	99.39
Dec	75,445	7,175,855	2,481,205	433,955	95.11
2013 Total	1,094,140	107,412,644	23,937,268	6,459,369	98.17



# THE ROCK ISLAND BOATWORKS, INC.



## Jumer's Casino & Hotel

777 Jumer Drive - Rock Island, Illinois 61201 - Telephone: 800 477-7747

### QUICK FACTS

- First Licensed: May 1992
- Renewed: May 2011
- Next Renewal: May 2015
- Waterway: Mississippi River
- Gambling Space: 42,000 sq. ft.
- Employees: 503
- Admissions: 1,202,508
- AGR per Admission: \$67.82
- Average Daily Admissions: 3,295
- Authorized gambling positions: 1,200
- Total AGR: \$81,548,137
- State share of taxes: \$15,505,903
- Local share of taxes: \$5,280,398

# JUMER'S CASINO & HOTEL

## CALENDAR YEAR COMPARISON

	2012	2013	% Change
<b>Number of Days Operational</b>	366	365	-0.27%
<b>Gross Receipts</b>	\$87,836,149	\$81,548,137	-7.16%
<b>Adjusted Gross Receipts (AGR)</b>	\$87,871,020	\$81,557,801	-7.18%
<b>Admissions</b>	1,298,240	1,202,508	-7.37%
<b>AGR Per Admission</b>	\$67.66	\$67.82	0.23%
<b>Gambling Sq. Ft.</b>	42,000	42,000	0.00%
<b>Number of Table Games</b>	30	29	-3.33%
<b>Table Drop</b>	\$35,315,965	\$33,510,040	-5.11%
<b>Table AGR</b>	\$5,985,578	\$6,191,363	3.44%
<b>AGR/Table/Day</b>	\$545.13	\$584.92	7.30%
<b>Table Game AGR to Drop %</b>	16.9%	18.5%	9.47%
<b>Number of EGD's</b>	1,090	1,091	0.09%
<b>EGD Handle</b>	\$957,219,117	\$874,412,919	-8.65%
<b>EGD AGR</b>	\$81,850,571	\$75,356,774	-7.93%
<b>AGR/EGD/Day</b>	\$205.17	\$189.24	-7.76%
<b>EGD AGR to Handle %</b>	8.6%	8.6%	0.00%
<b>Total Tax</b>	\$23,029,560	\$20,786,301	-9.74%
<b>State Share of Taxes</b>	\$17,337,769	\$15,505,903	-10.57%
<b>Local Share of Taxes</b>	\$5,691,791	\$5,280,398	-7.23%

# JUMER'S CASINO & HOTEL

## TABLE GAMES DETAIL

Table Games	Average # of Units	Total Table Drop	Adjusted Gross Receipts	AGR to Drop %
Blackjack	15	\$17,207,365	\$2,281,001	13.3%
Craps	2	5,859,615	1,398,469	23.9%
Roulette	2	2,411,590	566,090	23.5%
Poker	6	3,464,555	925,870	26.7%
Three Card Poker	1	1,362,943	299,462	22.0%
Mississippi Stud	2	2,723,563	613,486	22.5%
Pai Gow Poker	1	480,409	106,985	22.3%
<b>TOTAL</b>	<b>29</b>	<b>\$33,510,040</b>	<b>\$6,191,363</b>	<b>18.5%</b>

## ELECTRONIC GAMES DETAIL

EGD	Average # of Units	Total EGD Handle	Adjusted Gross Receipts	AGR to Handle %
\$0.01	766	\$506,676,319	\$56,828,894	11.2%
\$0.05	61	50,023,383	3,147,854	6.3%
\$0.25	105	126,249,746	5,586,901	4.4%
\$0.50	5	3,223,927	200,100	6.2%
\$1	111	144,071,676	7,218,207	5.0%
\$2	8	5,568,478	166,496	3.0%
\$5	27	28,085,853	1,565,568	5.6%
\$10	4	3,711,820	192,982	5.2%
\$25	4	6,801,717	449,772	6.6%
<b>TOTAL</b>	<b>1,091</b>	<b>\$874,412,919</b>	<b>\$75,356,774</b>	<b>8.6%</b>



# JUMER'S CASINO & HOTEL

Month	Adm	AGR	Taxes Collected		Win Per
	Total	Total	State	Local	Adm
1991 Total	0	0	0	0	0
1992 Total	632,913	24,842,694	4,359,317	1,875,048	39.25
1993 Total	996,278	39,104,701	6,861,983	2,951,513	39.25
1994 Total	945,231	29,810,707	5,416,837	2,435,766	31.54
1995 Total	765,029	18,154,884	3,488,262	1,672,773	23.73
1996 Total	696,793	15,632,765	3,041,708	1,478,431	22.44
1997 Total	668,408	15,977,978	3,065,105	1,467,307	23.90
1998 Total	634,896	14,542,918	2,084,032	1,359,497	22.91
1999 Total	593,924	17,318,896	2,330,321	1,462,123	29.16
2000 Total	759,897	31,080,923	4,161,608	2,310,468	40.90
2001 Total	793,509	35,681,961	4,875,684	2,570,901	44.97
2002 Total	854,047	40,037,470	6,407,415	2,857,850	46.88
2003 Total	780,044	39,493,811	7,425,416	2,755,559	50.63
2004 Total	753,945	38,352,573	7,409,734	2,670,644	50.87
2005 Total	729,262	39,707,550	6,283,649	2,714,536	54.45
2006 Total	693,291	39,117,613	5,664,711	2,649,411	56.42
2007 Total	623,093	35,755,392	5,006,070	2,411,087	57.38
2008 Total	668,993	34,282,665	4,808,247	2,387,351	51.25
2009 Total	1,256,537	70,491,112	12,735,975	4,779,745	56.10
2010 Total	1,382,602	79,406,313	15,102,224	5,354,352	57.43
2011 Total	1,332,379	85,826,485	16,820,280	5,625,634	64.42
Jan	95,736	6,686,260	763,420	429,578	69.84
Feb	109,753	7,503,972	860,538	485,145	68.37
Mar	118,456	8,275,250	949,782	534,119	69.86
Apr	109,924	7,487,502	1,228,122	483,024	68.12
May	108,384	7,322,680	1,391,393	474,958	67.56
June	113,123	7,467,774	1,417,989	485,942	66.01
July	119,821	7,702,872	1,591,698	505,263	64.29
Aug	113,540	7,630,452	1,831,061	495,211	67.20
Sept	112,933	7,151,467	1,720,363	470,140	63.32
Oct	106,215	7,267,397	1,742,449	469,823	68.42
Nov	95,293	6,651,449	1,902,894	428,435	69.80
Dec	95,062	6,689,074	1,938,060	430,153	70.37
2012 Total	1,298,240	87,836,149	17,337,769	5,691,791	67.66
Jan	89,430	6,277,018	715,522	402,476	70.19
Feb	94,337	6,582,210	752,932	423,634	69.77
Mar	110,802	7,923,694	903,116	506,959	71.51
Apr	104,158	7,297,906	1,063,800	468,984	70.07
May	109,113	6,993,373	1,334,002	459,081	64.09
June	110,099	7,312,242	1,389,003	475,500	66.42
July	111,821	7,097,251	1,355,049	467,029	63.47
Aug	108,297	7,223,437	1,710,196	470,074	66.70
Sept	99,845	6,666,737	1,600,255	433,270	66.77
Oct	95,811	6,369,204	1,526,650	413,775	66.48
Nov	89,655	6,199,666	1,532,521	399,800	69.15
Dec	79,140	5,605,399	1,622,857	359,816	70.83
2013 Total	1,202,508	81,548,137	15,505,903	5,280,398	67.82

# EMPRESS CASINO-JOLIET, CORPORATION



## Hollywood Casino Joliet

777 Hollywood Boulevard - Joliet, Illinois 60436 - Telephone: 888 436-7737

### QUICK FACTS

- First Licensed: July 1992
- Renewed: July 2010
- Next Renewal: July 2014
- Waterway: Des Plaines River
- Gambling Space: 50,000 sq. ft.
- Employees: 678
- Admissions: 1,237,432
- AGR per Admission: \$106.01
- Average Daily Admissions: 3,390
- Authorized gambling positions: 1,200
- Total AGR: \$131,183,854
- State share of taxes: \$32,023,169
- Local share of taxes: \$7,802,556

# HOLLYWOOD CASINO JOLIET

## CALENDAR YEAR COMPARISON

	2012	2013	% Change
<b>Number of Days Operational</b>	366	365	-0.27%
<b>Gross Receipts</b>	\$141,806,184	\$131,183,854	-7.49%
<b>Adjusted Gross Receipts (AGR)</b>	\$141,516,049	\$131,302,477	-7.22%
<b>Admissions</b>	1,346,101	1,237,432	-8.07%
<b>AGR Per Admission</b>	\$105.35	\$106.01	0.63%
<b>Gambling Sq. Ft.</b>	50,000	50,000	0.00%
<b>Number of Table Games</b>	22	20	-9.09%
<b>Table Drop</b>	\$113,429,690	\$105,570,813	-6.93%
<b>Table AGR</b>	\$19,747,031	\$18,046,151	-8.61%
<b>AGR/Table/Day</b>	\$2,452.44	\$2,472.08	0.80%
<b>Table Game AGR to Drop %</b>	17.4%	17.1%	-1.72%
<b>Number of EGD's</b>	1,177	1,177	0.00%
<b>EGD Handle</b>	\$1,340,556,735	\$1,321,492,488	-1.42%
<b>EGD AGR</b>	\$122,059,153	\$113,137,703	-7.31%
<b>AGR/EGD/Day</b>	\$283.34	\$263.35	-7.06%
<b>EGD AGR to Handle %</b>	9.1%	8.6%	-5.49%
<b>Total Tax</b>	\$43,981,824	\$39,825,725	-9.45%
<b>State Share of Taxes</b>	\$35,559,920	\$32,023,169	-9.95%
<b>Local Share of Taxes</b>	\$8,421,904	\$7,802,556	-7.35%



# HOLLYWOOD CASINO JOLIET

## TABLE GAMES DETAIL

Table Games	Average # of Units	Total Table Drop	Adjusted Gross Receipts	AGR to Drop %
Blackjack	9	\$49,431,309	\$7,231,773	14.6%
Craps	2	23,483,423	3,491,131	14.9%
Roulette	1	8,605,055	2,000,890	23.3%
Poker	3	2,027,232	1,175,269	58.0%
CS Poker	1	2,043,040	577,105	28.2%
Three Card Poker	1	3,922,146	978,333	24.9%
Mini-Baccarat	1	11,575,071	1,512,226	13.1%
Mississippi Stud	2	4,483,537	1,079,424	24.1%
<b>TOTAL</b>	<b>20</b>	<b>\$105,570,813</b>	<b>\$18,046,151</b>	<b>17.1%</b>

## ELECTRONIC GAMES DETAIL

EGD	Average # of Units	Total EGD Handle	Adjusted Gross Receipts	AGR to Handle %
\$0.01	528	\$410,830,027	\$52,112,363	12.7%
\$0.02	214	168,417,993	19,389,579	11.5%
\$0.05	47	59,328,507	4,428,591	7.5%
\$0.10	14	44,123,001	2,273,397	5.2%
\$0.25	181	296,921,595	16,092,402	5.4%
\$0.50	14	15,076,986	1,360,492	9.0%
\$1	156	282,301,324	15,091,599	5.3%
\$5	16	31,052,860	1,677,045	5.4%
\$10	4	9,864,945	515,085	5.2%
\$25	2	2,905,450	230,445	7.9%
\$100	1	669,800	(33,295)	-5.0%
<b>TOTAL</b>	<b>1,177</b>	<b>\$1,321,492,488</b>	<b>\$113,137,703</b>	<b>8.6%</b>

# HOLLYWOOD CASINO JOLIET

Month	Adm	AGR	Taxes Collected		Win Per
	Total	Total	State	Local	Adm
1991 Total	0	0	0	0	0
1992 Total	1,043,962	78,887,572	11,833,136	4,988,340	75.57
1993 Total	2,155,138	172,859,630	26,972,907	10,798,119	80.21
1994 Total	3,152,962	202,771,211	32,570,820	13,291,523	64.31
1995 Total	3,347,698	202,582,454	33,540,330	13,476,821	60.51
1996 Total	3,361,983	167,884,431	25,442,157	11,756,204	49.94
1997 Total	3,407,122	136,504,791	20,737,037	10,232,361	40.06
1998 Total	3,497,412	153,568,291	37,011,355	11,166,400	43.91
1999 Total	3,006,470	192,760,373	48,321,332	12,642,281	64.12
2000 Total	2,503,020	235,866,424	60,624,123	14,273,204	94.23
2001 Total	2,374,322	260,862,957	68,061,588	15,405,533	109.87
2002 Total	2,111,367	237,769,694	73,242,527	13,994,131	112.61
2003 Total	1,990,689	232,925,884	80,768,383	13,617,406	117.01
2004 Total	1,777,950	228,128,269	89,854,250	13,182,995	128.31
2005 Total	1,923,969	238,197,486	87,173,331	13,833,362	123.81
2006 Total	2,141,534	253,766,059	93,387,301	14,830,045	118.50
2007 Total	2,109,545	240,157,707	84,512,627	14,120,042	113.84
2008 Total	1,678,360	183,930,419	52,566,025	10,876,398	109.59
2009 Total	1,116,396	119,954,225	28,105,729	7,116,061	107.45
2010 Total	1,265,691	143,440,540	36,016,732	8,437,235	113.33
2011 Total	1,411,387	146,401,419	37,214,541	8,736,399	103.73
Jan	94,306	10,875,655	1,276,103	638,051	115.32
Feb	106,395	11,093,211	1,321,771	660,885	104.26
Mar	119,881	13,188,979	2,324,252	780,491	110.02
Apr	115,136	12,072,748	2,340,080	717,938	104.86
May	117,358	11,523,093	2,641,598	682,966	98.19
June	118,376	11,818,616	2,890,951	708,198	99.84
July	126,233	13,726,374	3,794,572	812,602	108.74
Aug	118,793	11,988,285	3,536,701	718,632	100.92
Sept	109,546	11,932,549	3,900,899	706,242	108.93
Oct	103,524	10,756,108	3,703,955	641,510	103.90
Nov	106,185	10,924,420	3,737,889	648,573	102.88
Dec	110,368	11,906,146	4,091,149	705,816	107.88
2012 Total	1,346,101	141,806,184	35,559,920	8,421,904	105.35
Jan	101,152	10,713,824	1,274,377	637,189	105.92
Feb	104,243	11,061,910	1,314,553	657,277	106.12
Mar	119,818	12,851,268	2,248,787	762,831	107.26
Apr	107,425	11,905,280	2,300,552	703,340	110.82
May	112,235	11,941,442	2,740,429	709,560	106.40
June	107,057	11,348,226	2,769,869	675,002	106.00
July	108,112	10,915,130	2,956,375	653,000	100.96
Aug	106,288	10,886,074	3,212,464	651,722	102.42
Sept	96,910	10,160,789	3,077,521	604,619	104.85
Oct	93,188	10,124,957	3,480,595	599,991	108.65
Nov	93,959	9,690,817	3,337,163	578,458	103.14
Dec	87,045	9,584,137	3,310,484	569,567	110.11
2013 Total	1,237,432	131,183,854	32,023,169	7,802,556	106.01

# SOUTHERN ILLINOIS RIVERBOAT



## Harrah's Metropolis Casino & Hotel

100 East Front Street - Metropolis, Illinois 62960 - Telephone: 800 935-7700

### QUICK FACTS

- First Licensed: February, 1993
- Renewed: February 2013
- Next Renewal: February 2017
- Waterway: Ohio River
- Gambling Space: 30,985 sq. ft.
- Employees: 595
- Admissions: 672,034
- AGR per Admission: \$127.02
- Average Daily Admissions: 1,841
- Authorized gambling positions: 1,200
- Total AGR: \$85,361,134
- State share of taxes: \$16,729,701
- Local share of taxes: \$4,946,695



# HARRAH'S METROPOLIS CASINO & HOTEL

## CALENDAR YEAR COMPARISON

	2012	2013	% Change
<b>Number of Days Operational</b>	366	365	-0.27%
<b>Gross Receipts</b>	\$97,434,563	\$85,361,134	-12.39%
<b>Adjusted Gross Receipts (AGR)</b>	\$97,687,183	\$85,493,213	-12.48%
<b>Admissions</b>	768,443	672,034	-12.55%
<b>AGR Per Admission</b>	\$126.79	\$127.02	0.18%
<b>Gambling Sq. Ft.</b>	30,985	30,985	0.00%
<b>Number of Table Games</b>	27	27	0.00%
<b>Table Drop</b>	\$65,523,452	\$60,426,365	-7.78%
<b>Table AGR</b>	\$13,321,769	\$12,184,019	-8.54%
<b>AGR/Table/Day</b>	\$1,348.08	\$1,236.33	-8.29%
<b>Table Game AGR to Drop %</b>	20.3%	20.2%	-0.49%
<b>Number of EGD's</b>	1,142	1,129	-1.14%
<b>EGD Handle</b>	\$766,088,845	\$664,219,086	-13.30%
<b>EGD AGR</b>	\$84,112,794	\$73,177,115	-13.00%
<b>AGR/EGD/Day</b>	\$201.24	\$177.58	-11.76%
<b>EGD AGR to Handle %</b>	11.0%	11.0%	0.00%
<b>Total Tax</b>	\$25,928,662	\$21,676,396	-16.40%
<b>State Share of Taxes</b>	\$20,275,860	\$16,729,701	-17.49%
<b>Local Share of Taxes</b>	\$5,652,802	\$4,946,695	-12.49%

# HARRAH'S METROPOLIS CASINO & HOTEL

## TABLE GAMES DETAIL

Table Games	Average # of Units	Total Table Drop	Adjusted Gross Receipts	AGR to Drop %
Blackjack	9	\$22,549,992	\$4,126,767	18.3%
Craps	2	10,421,138	1,939,478	18.6%
Roulette	2	4,589,708	1,059,658	23.1%
Poker	5	2,556,553	471,852	18.5%
Let It Ride Bonus	2	2,052,810	609,000	29.7%
Three Card Poker	2	4,193,685	1,170,340	27.9%
Mini-Baccarat	2	6,861,801	1,005,795	14.7%
Blackjack 21+3	3	7,200,678	1,801,129	25.0%
<b>TOTAL</b>	<b>27</b>	<b>\$60,426,365</b>	<b>\$12,184,019</b>	<b>20.2%</b>

## ELECTRONIC GAMES DETAIL

EGD	Average # of Units	Total EGD Handle	Adjusted Gross Receipts	AGR to Handle %
\$0.01	670	\$321,922,109	\$41,650,585	12.9%
\$0.02	21	7,345,459	1,105,078	15.0%
\$0.05	31	29,965,390	2,146,892	7.2%
\$0.25	203	116,370,485	10,919,809	9.4%
\$0.50	8	2,995,354	216,502	7.2%
\$1	167	152,211,464	13,708,723	9.0%
\$5	21	23,258,375	2,383,274	10.2%
\$10	4	4,007,675	133,903	3.3%
\$25	4	6,142,775	912,349	14.9%
<b>TOTAL</b>	<b>1,129</b>	<b>\$664,219,086</b>	<b>\$73,177,115</b>	<b>11.0%</b>

# HARRAH'S METROPOLIS CASINO & HOTEL

Month	Adm	AGR	Taxes Collected		Win Per
	Total	Total	State	Local	Adm
1991 Total	0	0	0	0	0
1992 Total	0	0	0	0	0
1993 Total	1,085,773	54,402,452	9,246,141	3,805,896	50.10
1994 Total	1,269,154	70,609,220	11,860,537	4,799,615	55.63
1995 Total	1,986,148	83,395,759	14,495,512	6,155,936	41.99
1996 Total	1,934,106	76,663,166	13,433,581	5,767,264	39.64
1997 Total	2,032,272	76,740,757	13,543,386	5,869,310	37.76
1998 Total	2,108,850	80,631,622	14,774,287	6,141,935	38.23
1999 Total	1,769,953	89,354,089	16,580,981	6,232,159	50.48
2000 Total	1,399,499	108,816,941	21,386,354	6,813,975	77.75
2001 Total	1,432,742	119,783,701	24,836,242	7,416,659	83.60
2002 Total	1,516,767	138,791,382	33,073,258	8,451,441	91.50
2003 Total	1,426,190	134,940,409	42,600,445	8,163,312	94.62
2004 Total	1,346,478	142,926,025	50,021,149	8,469,446	106.15
2005 Total	1,135,553	145,559,724	41,038,281	8,413,434	128.18
2006 Total	1,304,237	160,446,240	51,422,271	9,330,506	123.02
2007 Total	1,421,819	170,054,243	49,934,528	9,921,866	119.60
2008 Total	1,076,085	126,501,001	30,190,409	7,407,894	117.56
2009 Total	1,074,513	117,721,230	27,306,221	6,964,396	109.56
2010 Total	972,488	112,538,682	25,541,410	6,621,939	115.72
2011 Total	766,604	95,750,024	19,647,048	5,559,086	124.90
Jan	62,559	7,692,804	890,911	445,456	122.97
Feb	70,528	9,075,871	1,048,827	524,413	128.68
Mar	72,430	9,065,129	1,114,370	526,526	125.16
Apr	65,808	8,443,747	1,607,687	487,543	128.31
May	66,777	8,174,180	1,564,864	475,723	122.41
June	64,039	8,003,081	1,573,012	469,233	124.97
July	69,267	8,659,736	2,087,645	502,403	125.02
Aug	65,435	8,203,805	1,980,003	476,354	125.37
Sept	63,506	8,354,139	2,053,641	482,746	131.55
Oct	60,486	7,546,332	2,202,389	438,926	124.76
Nov	54,303	7,197,439	2,112,011	418,558	132.54
Dec	53,305	7,018,300	2,040,500	404,921	131.66
2012 Total	768,443	97,434,563	20,275,860	5,652,802	126.79
Jan	50,838	6,634,568	767,079	383,540	130.50
Feb	54,166	6,957,909	804,387	402,193	128.46
Mar	65,424	8,165,086	950,387	475,193	124.80
Apr	58,923	7,437,058	1,181,444	431,166	126.22
May	61,657	7,825,837	1,494,133	453,320	126.93
June	61,675	7,509,959	1,439,002	437,576	121.77
July	60,747	7,286,283	1,491,770	425,185	119.94
Aug	60,225	7,613,182	1,839,537	442,244	126.41
Sept	53,097	6,544,416	1,576,270	379,781	123.25
Oct	51,209	6,706,622	1,613,230	386,945	130.97
Nov	51,508	6,840,002	1,875,661	393,956	132.79
Dec	42,565	5,840,212	1,696,801	335,596	137.21
2013 Total	672,034	85,361,134	16,729,701	4,946,695	127.02



# DES PLAINES DEVELOPMENT



## Harrah's Joliet Casino & Hotel

151 North Joliet Street - Joliet, Illinois 60432 - Telephone: 800 427-7247

### QUICK FACTS

- First Licensed: August 1993
- Renewed: November 2011
- Next Renewal: September 2015
- Waterway: Des Plaines River
- Gambling Space: 39,000 sq. ft.
- Employees: 889
- Admissions: 1,659,301
- AGR per Admission: \$121.96
- Average Daily Admissions: 4,546
- Authorized gambling positions: 1,200
- Total AGR: \$202,369,258
- State share of taxes: \$60,034,982
- Local share of taxes: \$11,780,565

# HARRAH'S JOLIET CASINO & HOTEL

## CALENDAR YEAR COMPARISON

	2012	2013	% Change
<b>Number of Days Operational</b>	366	365	-0.27%
<b>Gross Receipts</b>	\$211,995,581	\$202,369,258	-4.54%
<b>Adjusted Gross Receipts (AGR)</b>	\$212,105,566	\$202,425,289	-4.56%
<b>Admissions</b>	1,798,785	1,659,301	-7.75%
<b>AGR Per Admission</b>	\$117.85	\$121.96	3.49%
<b>Gambling Sq. Ft.</b>	39,000	39,000	0.00%
<b>Number of Table Games</b>	33	34	3.03%
<b>Table Drop</b>	\$189,967,961	\$163,249,805	-14.06%
<b>Table AGR</b>	\$24,513,959	\$31,439,068	28.25%
<b>AGR/Table/Day</b>	\$2,029.64	\$2,533.37	24.82%
<b>Table Game AGR to Drop %</b>	12.9%	19.3%	49.61%
<b>Number of EGD's</b>	1,138	1,135	-0.26%
<b>EGD Handle</b>	\$2,289,170,826	\$2,123,683,779	-7.23%
<b>EGD AGR</b>	\$187,481,622	\$170,930,190	-8.83%
<b>AGR/EGD/Day</b>	\$450.13	\$412.60	-8.34%
<b>EGD AGR to Handle %</b>	8.2%	8.0%	-2.44%
<b>Total Tax</b>	\$77,074,138	\$71,815,547	-6.82%
<b>State Share of Taxes</b>	\$64,670,074	\$60,034,982	-7.17%
<b>Local Share of Taxes</b>	\$12,404,064	\$11,780,565	-5.03%



# HARRAH'S JOLIET CASINO & HOTEL

## TABLE GAMES DETAIL

Table Games	Average # of Units	Total Table Drop	Adjusted Gross Receipts	AGR to Drop %
Blackjack	3	\$26,983,494	\$4,639,490	17.2%
Craps	2	29,449,037	5,009,192	17.0%
Roulette	2	13,869,174	3,309,811	23.9%
Three Card Poker	3	9,221,123	3,044,994	33.0%
Let it Ride Poker	1	1,838,444	484,629	26.4%
Texas Holdem Bonus Poker	1	588,548	172,668	29.3%
Mississippi Stud	2	7,122,638	1,743,826	24.5%
Mini-Baccarat	1	12,375,211	1,196,747	9.7%
Poker	8	4,031,578	1,622,008	40.2%
Blackjack 21+3	10	54,797,980	9,639,505	17.6%
Four Card Poker	1	2,972,578	576,198	19.4%
<b>TOTAL</b>	<b>34</b>	<b>\$163,249,805</b>	<b>\$31,439,068</b>	<b>19.3%</b>

## ELECTRONIC GAMES DETAIL

EGD	Average # of Units	Total EGD Handle	Adjusted Gross Receipts	AGR to Handle %
\$0.01	353	\$366,257,361	\$46,359,876	12.7%
\$0.02	326	364,013,943	46,587,889	12.8%
\$0.05	51	91,462,497	8,044,270	8.8%
\$0.10	2	2,183,518	236,518	10.8%
\$0.25	200	557,719,771	30,917,464	5.5%
\$0.50	10	11,221,600	1,391,940	12.4%
\$1	168	655,588,029	32,196,285	4.9%
\$5	21	58,991,805	3,821,797	6.5%
\$10	1	8,811,380	500,966	5.7%
\$25	2	5,693,575	560,709	9.8%
\$100	1	1,740,300	312,476	18.0%
<b>TOTAL</b>	<b>1,135</b>	<b>\$2,123,683,779</b>	<b>\$170,930,190</b>	<b>8.0%</b>



# HARRAH'S JOLIET CASINO & HOTEL

Month	Adm	AGR	Taxes Collected		Win Per
	Total	Total	State	Local	Adm
1991 Total	0	0	0	0	0
1992 Total	0	0	0	0	0
1993 Total	984,802	66,504,195	10,960,431	4,310,011	67.53
1994 Total	2,684,777	167,484,237	27,807,413	11,058,989	62.38
1995 Total	3,046,011	201,348,131	33,248,231	13,113,417	66.10
1996 Total	2,879,259	181,568,146	30,114,481	11,957,666	63.06
1997 Total	3,127,340	152,565,997	26,012,240	10,755,640	48.78
1998 Total	3,144,209	162,274,306	39,343,115	11,260,692	51.61
1999 Total	2,834,435	216,590,775	55,345,672	13,669,642	76.41
2000 Total	2,431,006	280,624,566	74,156,303	16,468,556	115.44
2001 Total	2,730,403	300,897,003	80,495,582	17,774,600	110.20
2002 Total	3,102,623	315,107,433	107,596,860	18,864,122	101.56
2003 Total	2,386,938	269,772,752	99,849,343	15,877,132	113.02
2004 Total	1,954,282	272,333,009	116,810,737	15,592,392	139.35
2005 Total	2,215,276	313,441,362	126,425,020	17,888,210	141.49
2006 Total	2,653,667	347,537,343	127,358,407	20,034,342	130.96
2007 Total	2,992,104	381,092,808	143,114,888	22,048,291	127.37
2008 Total	2,570,878	297,674,723	104,764,205	17,459,484	115.79
2009 Total	2,517,489	278,730,833	96,118,118	16,457,283	110.72
2010 Total	2,213,736	246,417,859	80,972,451	14,538,179	111.31
2011 Total	1,885,716	223,714,297	69,921,372	13,074,544	118.64
Jan	139,989	16,509,204	1,927,925	963,962	117.93
Feb	149,466	18,795,199	2,951,002	1,089,783	125.75
Mar	156,298	18,608,552	3,765,946	1,087,200	119.06
Apr	157,640	19,010,796	4,588,880	1,107,329	120.60
May	162,416	17,869,306	5,133,848	1,055,895	110.02
June	154,765	17,875,696	5,660,366	1,048,992	115.50
July	165,608	19,047,133	6,519,972	1,117,724	115.01
Aug	157,465	18,410,883	6,302,432	1,078,619	116.92
Sept	139,363	15,331,650	6,132,910	907,538	110.01
Oct	139,495	16,428,999	6,846,874	960,481	117.77
Nov	132,745	16,710,318	6,977,983	971,807	125.88
Dec	143,535	17,397,845	7,861,936	1,014,734	121.21
2012 Total	1,798,785	211,995,581	64,670,074	12,404,064	117.85
Jan	138,939	16,951,677	1,965,647	982,824	122.01
Feb	125,301	14,861,680	2,240,716	867,954	118.61
Mar	154,446	18,663,016	3,611,465	1,091,343	120.84
Apr	144,975	16,654,787	4,041,215	978,589	114.88
May	144,800	19,091,566	5,128,172	1,095,986	131.85
June	134,736	16,880,799	5,067,557	979,328	125.29
July	146,553	16,598,841	5,694,406	977,522	113.26
Aug	150,361	18,995,637	6,475,116	1,100,268	126.33
Sept	139,377	17,435,710	6,417,949	1,012,957	125.10
Oct	131,898	15,213,576	6,354,320	893,213	115.34
Nov	131,835	16,232,898	6,772,861	945,484	123.13
Dec	116,080	14,789,071	6,265,558	855,097	127.40
2013 Total	1,659,301	202,369,258	60,034,982	11,780,565	121.96

# HOLLYWOOD CASINO-AURORA, INC.



## Hollywood Casino Aurora

49 West Galena Boulevard - Aurora, Illinois 60506 - Telephone: 800 888-7777

### QUICK FACTS

- First Licensed: July 1993
- Renewed: January 2011
- Next Renewal: December 2014
- Waterway: Fox River
- Gambling Space: 41,384 sq. ft.
- Employees: 617
- Admissions: 1,256,773
- AGR per Admission: \$112.76
- Average Daily Admissions: 3,443
- Authorized gambling positions: 1,200
- Total AGR: \$141,710,408
- State share of taxes: \$35,497,000
- Local share of taxes: \$8,350,381

# HOLLYWOOD CASINO AURORA

## CALENDAR YEAR COMPARISON

	2012	2013	% Change
<b>Number of Days Operational</b>	366	365	-0.27%
<b>Gross Receipts</b>	\$151,732,529	\$141,710,408	-6.61%
<b>Adjusted Gross Receipts (AGR)</b>	\$151,888,468	\$141,872,164	-6.59%
<b>Admissions</b>	1,374,454	1,256,773	-8.56%
<b>AGR Per Admission</b>	\$110.39	\$112.76	2.15%
<b>Gambling Sq. Ft.</b>	41,384	41,384	0.00%
<b>Number of Table Games</b>	27	27	0.00%
<b>Table Drop</b>	\$118,815,321	\$105,583,756	-11.14%
<b>Table AGR</b>	\$18,918,536	\$18,715,361	-1.07%
<b>AGR/Table/Day</b>	\$1,914.44	\$1,899.07	-0.80%
<b>Table Game AGR to Drop %</b>	15.9%	17.7%	11.32%
<b>Number of EGD's</b>	1,172	1,161	-0.94%
<b>EGD Handle</b>	\$1,444,893,812	\$1,340,532,076	-7.22%
<b>EGD AGR</b>	\$132,813,993	\$122,995,047	-7.39%
<b>AGR/EGD/Day</b>	\$309.62	\$290.24	-6.26%
<b>EGD AGR to Handle %</b>	9.2%	9.2%	0.00%
<b>Total Tax</b>	\$48,098,172	\$43,847,381	-8.84%
<b>State Share of Taxes</b>	\$39,129,295	\$35,497,000	-9.28%
<b>Local Share of Taxes</b>	\$8,968,877	\$8,350,381	-6.90%



# HOLLYWOOD CASINO AURORA

## TABLE GAMES DETAIL

Table Games	Average # of Units	Total Table Drop	Adjusted Gross Receipts	AGR to Drop %
Blackjack	11	\$47,760,164	\$6,649,754	13.9%
Craps	2	20,312,309	3,590,471	17.7%
Roulette	3	10,892,852	2,565,178	23.5%
Poker	7	12,208,071	2,422,546	19.8%
CS Poker	1	2,423,440	677,190	27.9%
Three Card Poker	1	3,818,991	956,466	25.0%
Mississippi Stud	1	5,628,356	1,357,157	24.1%
Mini-Baccarat	1	2,539,573	496,599	19.6%
<b>TOTAL</b>	<b>27</b>	<b>\$105,583,756</b>	<b>\$18,715,361</b>	<b>17.7%</b>

## ELECTRONIC GAMES DETAIL

EGD	Average # of Units	Total EGD Handle	Adjusted Gross Receipts	AGR to Handle %
\$0.01	403	\$342,218,281	\$44,032,973	12.9%
\$0.02	259	212,452,541	25,723,642	12.1%
\$0.05	49	42,432,867	4,604,243	10.9%
\$0.10	16	34,504,014	1,757,113	5.1%
\$0.25	172	261,975,733	17,404,801	6.6%
\$0.50	19	14,575,554	1,502,323	10.3%
\$1	229	407,496,081	26,294,377	6.5%
\$5	9	22,094,730	1,411,835	6.4%
\$25	3	2,491,475	205,840	8.3%
\$100	2	290,800	57,900	19.9%
<b>TOTAL</b>	<b>1,161</b>	<b>\$1,340,532,076</b>	<b>\$122,995,047</b>	<b>9.2%</b>

# HOLLYWOOD CASINO AURORA

Month	Adm	AGR	Taxes Collected		Win Per
	Total	Total	State	Local	Adm
1991 Total	0	0	0	0	0
1992 Total	0	0	0	0	0
1993 Total	994,627	64,139,618	10,615,570	4,201,608	64.49
1994 Total	2,352,803	139,716,301	23,310,248	9,338,618	59.38
1995 Total	2,723,083	146,456,718	24,691,591	10,045,919	53.78
1996 Total	3,180,239	157,210,011	26,761,741	11,040,740	49.43
1997 Total	3,608,393	153,798,896	26,678,227	11,298,338	42.62
1998 Total	3,281,429	157,001,757	37,783,240	11,115,064	47.85
1999 Total	3,074,115	191,045,640	47,918,047	12,631,438	62.15
2000 Total	2,661,334	217,495,111	55,378,114	13,530,798	81.72
2001 Total	2,307,698	232,211,411	59,478,275	13,919,461	100.62
2002 Total	2,638,509	272,601,315	89,472,095	16,259,193	103.32
2003 Total	1,917,314	246,866,057	85,708,126	14,253,797	128.76
2004 Total	1,448,717	229,541,358	89,493,262	12,923,396	158.44
2005 Total	1,547,775	240,996,416	87,792,528	13,606,013	155.71
2006 Total	1,814,179	265,688,563	95,654,615	15,105,581	146.45
2007 Total	1,815,777	272,475,694	91,958,958	15,449,378	150.06
2008 Total	1,627,759	220,000,676	67,921,721	12,632,336	135.16
2009 Total	1,599,896	202,274,745	59,914,492	11,720,974	126.43
2010 Total	1,488,021	180,986,362	51,070,347	10,546,682	121.63
2011 Total	1,498,609	173,306,999	47,895,036	10,157,711	115.65
Jan	99,636	10,895,642	1,291,728	645,864	109.35
Feb	117,825	13,385,273	1,576,157	788,078	113.60
Mar	131,369	13,881,919	2,646,420	826,786	105.67
Apr	118,944	13,499,138	2,688,019	794,107	113.49
May	117,699	12,642,988	3,080,033	749,840	107.42
June	115,168	12,778,098	3,220,386	755,322	110.95
July	117,820	12,611,832	3,699,072	747,535	107.04
Aug	114,345	12,764,295	3,882,661	755,099	111.63
Sept	115,217	12,767,621	4,374,429	752,755	110.81
Oct	107,917	12,402,999	4,249,379	728,462	114.93
Nov	107,825	11,537,748	3,971,656	685,672	107.00
Dec	110,689	12,564,976	4,449,355	739,357	113.52
2012 Total	1,374,454	151,732,529	39,129,295	8,968,877	110.39
Jan	100,295	10,860,640	1,288,111	644,054	108.29
Feb	100,475	11,639,537	1,367,260	683,630	115.85
Mar	130,655	14,183,575	2,563,275	841,110	108.56
Apr	108,439	12,519,230	2,410,311	735,134	115.45
May	116,244	12,890,326	3,105,193	762,608	110.89
June	108,578	12,353,020	2,990,037	724,774	113.77
July	111,788	12,054,813	3,520,254	715,434	107.84
Aug	110,807	12,244,331	3,590,428	723,319	110.50
Sept	94,979	11,041,326	3,725,925	647,777	116.25
Oct	91,349	10,665,574	3,651,145	624,956	116.76
Nov	97,724	10,812,775	3,716,957	639,495	110.65
Dec	85,440	10,445,261	3,568,104	608,090	122.25
2013 Total	1,256,773	141,710,408	35,497,000	8,350,381	112.76

# CASINO QUEEN, INC.



## Casino Queen, Inc.

200 South Front Street - East St. Louis, Illinois 62201 - Telephone: 800 777-0777

### QUICK FACTS

- First Licensed: July 1993
- Renewed: July 2013
- Next Renewal: July 2017
- Waterway: Mississippi River
- Gambling Space: 40,000 sq. ft.
- Employees: 655
- Admissions: 1,689,422
- AGR per Admission: \$73.69
- Average Daily Admissions: 4,629
- Authorized gambling positions: 1,200
- Total AGR: \$124,492,607
- State share of taxes: \$30,741,132
- Local share of taxes: \$7,918,236



# CASINO QUEEN, INC.

## CALENDAR YEAR COMPARISON

	2012	2013	% Change
<b>Number of Days Operational</b>	366	365	-0.27%
<b>Gross Receipts</b>	\$131,187,193	\$124,492,607	-5.10%
<b>Adjusted Gross Receipts (AGR)</b>	\$131,211,807	\$124,576,272	-5.06%
<b>Admissions</b>	1,866,458	1,689,422	-9.49%
<b>AGR Per Admission</b>	\$70.29	\$73.69	4.84%
<b>Gambling Sq. Ft.</b>	40,000	40,000	0.00%
<b>Number of Table Games</b>	27	22	-18.52%
<b>Table Drop</b>	\$82,828,397	\$77,617,215	-6.29%
<b>Table AGR</b>	\$15,082,190	\$14,467,127	-4.08%
<b>AGR/Table/Day</b>	\$1,526.23	\$1,801.63	18.04%
<b>Table Game AGR to Drop %</b>	18.2%	18.6%	2.20%
<b>Number of EGD's</b>	1,153	1,193	3.47%
<b>EGD Handle</b>	\$1,716,213,942	\$1,564,403,882	-8.85%
<b>EGD AGR</b>	\$116,105,003	\$110,025,480	-5.24%
<b>AGR/EGD/Day</b>	\$275.13	\$252.67	-8.16%
<b>EGD AGR to Handle %</b>	6.8%	7.0%	2.94%
<b>Total Tax</b>	\$41,678,802	\$38,659,368	-7.24%
<b>State Share of Taxes</b>	\$33,251,754	\$30,741,132	-7.55%
<b>Local Share of Taxes</b>	\$8,427,048	\$7,918,236	-6.04%

# CASINO QUEEN, INC.

## TABLE GAMES DETAIL

Table Games	Average # of Units	Total Table Drop	Adjusted Gross Receipts	AGR to Drop %
Blackjack	12	\$38,140,857	\$6,259,629	16.4%
Craps	3	17,127,027	3,953,448	23.1%
Roulette	1	5,523,158	1,425,560	25.8%
CS Poker	1	1,069,694	297,031	27.8%
Three Card Poker	1	5,101,616	599,942	11.8%
Mini-Baccarat	2	6,670,267	1,047,584	15.7%
Mississippi Stud	1	3,075,979	623,682	20.3%
Texas Holdem Bonus Poker	1	908,617	260,251	28.6%
<b>TOTAL</b>	<b>22</b>	<b>\$77,617,215</b>	<b>\$14,467,127</b>	<b>18.6%</b>

## ELECTRONIC GAMES DETAIL

EGD	Average # of Units	Total EGD Handle	Adjusted Gross Receipts	AGR to Handle %
\$0.01	651	\$559,737,512	\$62,365,056	11.1%
\$0.05	98	165,800,044	9,635,893	5.8%
\$0.10	14	27,417,722	1,179,592	4.3%
\$0.25	231	398,949,440	18,444,326	4.6%
\$0.50	23	50,331,897	2,016,588	4.0%
\$1	145	239,044,077	11,652,910	4.9%
\$5	26	94,708,190	4,168,210	4.4%
\$10	1	2,845,700	81,435	2.9%
\$25	2	12,464,700	284,270	2.3%
\$50	2	13,104,600	197,200	1.5%
<b>TOTAL</b>	<b>1,193</b>	<b>\$1,564,403,882</b>	<b>\$110,025,480</b>	<b>7.0%</b>

# CASINO QUEEN, INC.

Month	Adm	AGR	Taxes Collected		Win Per
	Total	Total	State	Local	Adm
1991 Total	0	0	0	0	0
1992 Total	0	0	0	0	0
1993 Total	1,215,951	51,541,276	8,947,142	3,793,015	42.39
1994 Total	3,671,883	129,785,446	23,139,700	10,161,155	35.35
1995 Total	3,883,179	128,197,800	23,112,849	10,293,069	33.01
1996 Total	4,105,920	128,987,975	23,454,116	10,555,319	31.42
1997 Total	3,607,561	116,590,371	21,096,117	9,437,080	32.32
1998 Total	3,425,733	116,486,988	25,895,396	9,254,006	34.00
1999 Total	2,811,248	138,202,218	31,762,447	9,719,782	49.16
2000 Total	2,109,551	156,880,385	36,681,103	9,954,810	74.37
2001 Total	2,024,046	155,082,587	36,063,984	9,780,703	76.62
2002 Total	2,038,942	156,943,162	40,184,130	9,895,991	76.97
2003 Total	2,032,566	158,033,927	52,995,840	9,926,617	77.75
2004 Total	2,166,506	166,262,134	63,224,264	10,483,145	76.74
2005 Total	2,108,803	168,724,765	54,343,093	10,545,446	80.01
2006 Total	2,103,838	174,279,291	53,995,657	10,820,363	82.84
2007 Total	2,288,232	188,624,732	59,547,076	11,738,204	82.43
2008 Total	2,296,919	160,194,391	44,166,962	10,292,397	69.74
2009 Total	2,242,213	147,539,524	39,343,475	9,623,667	65.80
2010 Total	2,046,112	130,926,774	33,545,533	8,596,621	63.99
2011 Total	1,946,180	130,165,501	32,963,858	8,455,040	66.88
Jan	152,015	10,735,122	1,376,448	688,224	70.62
Feb	165,917	11,719,242	1,504,808	752,404	70.63
Mar	166,841	12,050,643	2,252,546	769,647	72.23
Apr	150,612	11,110,795	2,247,230	706,614	73.77
May	157,082	10,795,766	2,522,167	696,304	68.73
June	158,296	11,291,876	2,863,764	724,334	71.33
July	171,767	10,999,042	3,000,984	720,983	64.03
Aug	158,418	11,171,408	3,390,752	717,312	70.52
Sept	152,195	10,323,271	3,153,745	668,269	67.83
Oct	147,576	10,530,746	3,713,700	673,506	71.36
Nov	139,212	10,206,039	3,598,392	649,976	73.31
Dec	146,527	10,253,243	3,627,218	659,475	69.98
2012 Total	1,866,458	131,187,193	33,251,754	8,427,048	70.29
Jan	130,281	9,567,350	1,218,096	609,048	73.44
Feb	139,168	10,435,628	1,325,760	662,880	74.99
Mar	160,575	12,513,961	2,139,772	786,262	77.93
Apr	149,501	10,852,241	2,193,623	690,822	72.59
May	149,514	11,395,332	2,546,102	722,311	76.22
June	147,036	10,430,125	2,626,791	665,417	70.94
July	147,223	10,458,931	2,681,996	670,293	71.04
Aug	148,584	10,591,169	3,212,991	678,734	71.28
Sept	135,565	9,684,844	2,938,400	620,523	71.44
Oct	132,757	9,356,916	3,108,766	601,128	70.48
Nov	129,306	9,920,739	3,517,801	630,720	76.72
Dec	119,912	9,285,371	3,231,034	580,098	77.43
2013 Total	1,689,422	124,492,607	30,741,132	7,918,236	73.69



# ELGIN RIVERBOAT RESORT



## Grand Victoria Casino

250 South Grove Street - Elgin, Illinois 60120 - Telephone: 847 468-7000

### QUICK FACTS

- First Licensed: October 1994
- Renewed: October 2012
- Next Renewal: October 2016
- Waterway: Fox River
- Gambling Space: 29,850 sq. ft.
- Employees: 772
- Admissions: 1,610,241
- AGR per Admission: \$120.65
- Average Daily Admissions: 4,412
- Authorized gambling positions: 1,200
- Total AGR: \$194,272,314
- State share of taxes: \$56,575,729
- Local share of taxes: \$11,326,522



# GRAND VICTORIA CASINO

## CALENDAR YEAR COMPARISON

	2012	2013	% Change
<b>Number of Days Operational</b>	366	365	-0.27%
<b>Gross Receipts</b>	\$212,393,609	\$194,272,314	-8.53%
<b>Adjusted Gross Receipts (AGR)</b>	\$212,433,464	\$194,325,617	-8.52%
<b>Admissions</b>	1,653,907	1,610,241	-2.64%
<b>AGR Per Admission</b>	\$128.42	\$120.65	-6.05%
<b>Gambling Sq. Ft.</b>	29,850	29,850	0.00%
<b>Number of Table Games</b>	32	29	-9.38%
<b>Table Drop</b>	\$176,862,882	\$162,879,389	-7.91%
<b>Table AGR</b>	\$35,703,827	\$32,305,528	-9.52%
<b>AGR/Table/Day</b>	\$3,048.48	\$3,052.01	0.12%
<b>Table Game AGR to Drop %</b>	20.2%	19.8%	-1.98%
<b>Number of EGD's</b>	1,144	1,161	1.49%
<b>EGD Handle</b>	\$2,119,335,051	\$1,865,096,428	-12.00%
<b>EGD AGR</b>	\$176,689,782	\$161,966,786	-8.33%
<b>AGR/EGD/Day</b>	\$421.99	\$382.21	-9.43%
<b>EGD AGR to Handle %</b>	8.3%	8.7%	4.82%
<b>Total Tax</b>	\$76,803,453	\$67,902,251	-11.59%
<b>State Share of Taxes</b>	\$64,527,872	\$56,575,729	-12.32%
<b>Local Share of Taxes</b>	\$12,275,581	\$11,326,522	-7.73%

# GRAND VICTORIA CASINO

## TABLE GAMES DETAIL

Table Games	Average # of Units	Total Table Drop	Adjusted Gross Receipts	AGR to Drop %
Blackjack	12	\$79,666,588	\$12,298,087	15.4%
Craps	2	25,568,284	4,522,720	17.7%
Roulette	3	20,779,704	5,164,425	24.9%
Poker	7	15,013,088	5,467,049	36.4%
Three Card Poker	2	8,648,075	1,885,971	21.8%
Mississippi Stud	2	6,987,348	1,745,190	25.0%
Mini Baccarat	1	6,216,302	1,222,086	19.7%
<b>TOTAL</b>	<b>29</b>	<b>\$162,879,389</b>	<b>\$32,305,528</b>	<b>19.8%</b>

## ELECTRONIC GAMES DETAIL

EGD	Average # of Units	Total EGD Handle	Adjusted Gross Receipts	AGR to Handle %
\$0.01	254	\$246,099,197	\$31,420,158	12.8%
\$0.02	296	311,630,990	39,588,858	12.7%
\$0.05	59	74,567,553	8,436,370	11.3%
\$0.10	9	6,750,853	1,021,275	15.1%
\$0.25	133	258,095,545	17,036,144	6.6%
\$0.50	31	25,022,057	3,195,760	12.8%
\$1	336	761,689,283	51,246,814	6.7%
\$5	31	140,171,255	7,140,252	5.1%
\$10	4	17,094,570	1,231,480	7.2%
\$25	6	17,819,425	1,347,675	7.6%
\$100	2	6,155,700	302,000	4.9%
<b>TOTAL</b>	<b>1,161</b>	<b>\$1,865,096,428</b>	<b>\$161,966,786</b>	<b>8.7%</b>



# GRAND VICTORIA CASINO

Month	Adm	AGR	Taxes Collected		Win Per
	Total	Total	State	Local	Adm
1991 Total	0	0	0	0	0
1992 Total	0	0	0	0	0
1993 Total	0	0	0	0	0
1994 Total	908,887	36,545,739	6,390,748	2,736,174	40.21
1995 Total	3,816,024	204,092,886	34,429,957	14,020,668	53.48
1996 Total	3,869,130	233,247,096	38,856,194	15,531,485	60.28
1997 Total	3,748,863	243,362,847	40,253,290	15,917,005	64.92
1998 Total	3,882,926	256,318,720	68,271,058	16,697,614	66.01
1999 Total	3,745,047	318,009,097	86,667,370	19,648,768	84.91
2000 Total	3,608,805	385,739,139	106,898,154	22,907,030	106.89
2001 Total	3,484,791	416,690,151	115,946,654	24,311,768	119.57
2002 Total	2,986,833	405,674,718	142,716,311	23,266,708	135.82
2003 Total	2,799,688	380,701,240	172,224,874	21,844,186	135.98
2004 Total	2,850,379	400,474,595	203,666,136	22,880,350	140.50
2005 Total	2,713,165	407,063,503	174,052,703	23,066,119	150.03
2006 Total	2,630,134	430,016,681	209,734,417	24,132,235	163.50
2007 Total	2,463,803	436,767,202	203,220,085	24,301,668	177.27
2008 Total	2,184,959	338,727,854	122,488,290	19,128,666	155.03
2009 Total	2,117,538	293,015,482	101,697,095	16,766,095	138.38
2010 Total	2,123,039	287,100,612	99,081,960	16,479,803	135.23
2011 Total	1,865,402	257,132,464	84,944,844	14,730,214	137.84
Jan	138,810	18,475,710	2,121,526	1,060,763	133.10
Feb	147,861	19,435,062	3,205,941	1,119,943	131.44
Mar	158,537	20,078,526	4,235,137	1,163,877	126.65
Apr	134,404	19,101,037	4,676,930	1,090,540	142.12
May	138,724	18,711,782	5,436,243	1,076,687	134.88
June	136,549	17,555,315	5,769,309	1,013,893	128.56
July	142,395	17,467,183	5,979,933	1,018,571	122.67
Aug	136,557	16,438,630	5,606,783	957,121	120.38
Sept	135,789	16,264,750	6,614,056	953,432	119.78
Oct	124,226	15,588,310	6,425,257	896,327	125.48
Nov	123,805	16,489,465	6,856,114	949,868	133.19
Dec	136,250	16,787,839	7,600,643	974,559	123.21
2012 Total	1,653,907	212,393,609	64,527,872	12,275,581	128.42
Jan	126,361	16,131,815	1,866,625	933,312	127.66
Feb	119,371	14,565,897	2,123,270	847,685	122.02
Mar	155,901	19,659,864	3,770,976	1,138,992	126.10
Apr	146,103	17,598,143	4,255,668	1,026,872	120.45
May	146,096	17,675,252	4,800,804	1,029,639	120.98
June	142,120	16,784,892	5,017,077	980,608	118.10
July	153,623	17,098,020	5,864,548	1,008,593	111.30
Aug	140,580	17,082,372	5,835,630	995,114	121.51
Sept	124,675	14,880,399	5,208,886	870,118	119.35
Oct	121,514	14,239,981	5,931,128	832,527	117.19
Nov	122,109	14,880,813	6,208,099	867,594	121.86
Dec	111,788	13,674,866	5,693,018	795,468	122.33
2013 Total	1,610,241	194,272,314	56,575,729	11,326,522	120.65

# MIDWEST GAMING & ENTERTAINMENT, LLC



## Rivers Casino

3000 South River Road - Des Plaines, Illinois 60018 - Telephone: 847 531-7756

### QUICK FACTS

- First Licensed: August 2011
- Renewed: August 2012
- Next Renewal: August 2016
- Waterway: Des Plaines River
- Gambling Space: 43,687 sq. ft.
- Employees: 1,466
- Admissions: 3,716,598
- AGR per Admission: \$112.66
- Average Daily Admissions: 10,182
- Authorized gambling positions: 1,200
- Total AGR: \$418,707,890
- State share of taxes: \$161,567,919
- Local share of taxes: \$24,662,123



# RIVERS CASINO

## CALENDAR YEAR COMPARISON

	2012	2013	% Change
<b>Number of Days Operational</b>	366	365	-0.27%
<b>Gross Receipts</b>	\$416,522,382	\$418,707,890	0.52%
<b>Adjusted Gross Receipts (AGR)</b>	\$416,675,757	\$418,910,496	0.54%
<b>Admissions</b>	3,968,668	3,716,598	-6.35%
<b>AGR Per Admission</b>	\$104.95	\$112.66	7.35%
<b>Gambling Sq. Ft.</b>	43,687	43,687	0.00%
<b>Number of Table Games</b>	48	48	0.00%
<b>Table Drop</b>	\$718,155,206	\$702,884,660	-2.13%
<b>Table AGR</b>	\$111,033,307	\$115,794,635	4.29%
<b>AGR/Table/Day</b>	\$6,320.20	\$6,609.28	4.57%
<b>Table Game AGR to Drop %</b>	15.5%	16.5%	6.45%
<b>Number of EGD's</b>	783	1,044	33.33%
<b>EGD Handle</b>	\$2,982,691,544	\$2,977,174,171	-0.18%
<b>EGD AGR</b>	\$305,489,075	\$302,913,255	-0.84%
<b>AGR/EGD/Day</b>	\$1,065.99	\$794.92	-25.43%
<b>EGD AGR to Handle %</b>	10.2%	10.2%	0.00%
<b>Total Tax</b>	\$185,868,882	\$186,230,042	0.19%
<b>State Share of Taxes</b>	\$161,066,426	\$161,567,919	0.31%
<b>Local Share of Taxes</b>	\$24,802,456	\$24,662,123	-0.57%



# RIVERS CASINO

## TABLE GAMES DETAIL

Table Games	Average # of Units	Total Table Drop	Adjusted Gross Receipts	AGR to Drop %
Blackjack	9	\$136,228,382	\$17,925,899	13.2%
Craps	4	88,877,867	17,729,397	19.9%
Roulette	5	72,423,004	18,045,341	24.9%
CS Poker	1	7,011,920	1,946,829	27.8%
Three Card Poker	2	13,946,752	3,671,898	26.3%
Mini-Baccarat	7	124,357,212	16,624,075	13.4%
Baccarat	2	48,828,075	7,073,942	14.5%
Four Card Poker	1	7,980,518	1,284,582	16.1%
Texas Holdem Bonus Poker	2	13,763,989	2,943,055	21.4%
Mississippi Stud	2	16,170,423	4,241,770	26.2%
Blackjack 21+3	11	157,963,228	20,487,941	13.0%
Spanish 21	1	7,743,115	1,433,629	18.5%
Pai Gow Poker	1	7,590,175	2,386,277	31.4%
<b>TOTAL</b>	<b>48</b>	<b>\$702,884,660</b>	<b>\$115,794,635</b>	<b>16.5%</b>

## ELECTRONIC GAMES DETAIL

EGD	Average # of Units	Total EGD Handle	Adjusted Gross Receipts	AGR to Handle %
\$0.01	182	\$313,896,812	\$43,057,005	13.7%
\$0.02	400	808,320,515	104,595,164	12.9%
\$0.05	46	110,422,260	13,943,260	12.6%
\$0.25	124	486,760,698	35,259,661	7.2%
\$1	255	1,064,091,171	90,536,201	8.5%
\$5	29	161,839,205	12,877,526	8.0%
\$10	2	6,433,085	803,901	12.5%
\$25	5	17,284,825	1,183,617	6.8%
\$100	1	8,125,600	656,920	8.1%
<b>TOTAL</b>	<b>1,044</b>	<b>\$2,977,174,171</b>	<b>\$302,913,255</b>	<b>10.2%</b>

# RIVERS CASINO

Month	Adm	AGR	Taxes Collected		Win Per
	Total	Total	State	Local	Adm
<b>2010 Total</b>	<b>0</b>	<b>0</b>	<b>0</b>	<b>0</b>	<b>0.00</b>
<b>2011 Total</b>	<b>1,945,895</b>	<b>176,778,835</b>	<b>50,506,359</b>	<b>10,819,591</b>	<b>90.85</b>
Jan	291,527	30,284,011	4,011,740	1,806,866	103.88
Feb	333,752	37,659,846	8,128,737	2,210,617	112.84
Mar	339,911	34,565,742	10,033,170	2,081,286	101.69
Apr	322,098	35,759,209	12,207,525	2,101,072	111.02
May	335,875	35,115,593	13,901,539	2,099,745	104.55
June	325,115	42,465,629	18,471,885	2,452,363	130.62
July	354,037	36,320,758	16,958,127	2,159,599	102.59
Aug	359,530	26,405,951	12,605,496	1,680,245	73.45
Sept	340,821	40,480,463	18,841,720	2,358,608	118.77
Oct	337,066	33,083,438	15,646,103	2,000,618	98.15
Nov	306,725	29,406,624	13,873,186	1,780,029	95.87
Dec	322,211	34,975,118	16,387,198	2,071,408	108.55
<b>2012 Total</b>	<b>3,968,668</b>	<b>416,522,382</b>	<b>161,066,426</b>	<b>24,802,456</b>	<b>104.95</b>
Jan	286,077	32,288,118	4,359,875	1,903,997	112.87
Feb	275,056	33,389,187	7,176,580	1,943,622	121.39
Mar	325,848	38,179,870	10,873,318	2,233,332	117.17
Apr	304,002	35,090,906	12,008,424	2,057,913	115.43
May	327,510	35,158,607	13,938,162	2,091,425	107.35
June	307,201	35,310,618	15,200,637	2,071,028	114.94
July	320,555	35,343,094	16,520,986	2,084,986	110.26
Aug	325,472	35,966,276	16,863,318	2,126,847	110.50
Sept	320,551	35,109,448	16,492,132	2,081,777	109.53
Oct	326,030	36,693,339	17,082,571	2,151,642	112.55
Nov	307,287	32,764,781	15,386,776	1,948,643	106.63
Dec	291,009	33,413,646	15,665,140	1,966,911	114.82
<b>2013 Total</b>	<b>3,716,598</b>	<b>418,707,890</b>	<b>161,567,919</b>	<b>24,662,123</b>	<b>112.66</b>

Des Plaines Rivers Casino Opened July 18, 2011

# APPENDIX

## GLOSSARY OF TERMS

### **Adjusted Gross Receipts (AGR)**

Gross gaming receipts, less winnings paid to wagerers. Also referred to as casino win.

### **Admissions**

Prior to dockside gambling in June 1999, admissions were the sum of both turnstile count and passengers remaining on board for each subsequent excursion. On June 26, 1999, dock side gambling began in Illinois. On that date the definition of admissions changed to reflect the number of patrons entering the casinos.

### **Education Assistance Fund (EAF)**

A fund of the State of Illinois into which state-retained gaming taxes are deposited.

### **Electronic Gaming Device (EGD)**

A video gaming machine or reel type of machine commonly referred to as a slot machine.

### **EGD Drop**

The total face value of tokens or representations of tokens collected from the drop bucket and U.S. currency collected from the bill validator drop box.

### **EGD Handle**

The total amount wagered on an electronic gaming device.

### **EGD Win Percent**

The percentage of the total EGD handle that is retained as winnings by the casino. (Board rules provide that EGDs must pay out at least 80 percent and no more than 100 percent of amounts wagered in those machines. The amount remaining after these payouts is the casino win and is used to figure the actual electronic gaming device win percentage.)

### **Gaming Positions**

Each riverboat casino is allowed up to 1,200 gaming positions. The formula developed by the Board to figure those positions are:

*Electronic gaming devices* — 90 percent of the total number of devices available for play

*Craps* — 10 positions for each craps table

*Other table games* – 5 positions for each table

*Keno* – 5 gaming positions

### **Slot Machine**

The common phrase to describe an Electronic Gaming Device.

### **Total Table Drop**

The total amount of cash or cash equivalents contained in the drop box for chips purchased at a table game. This does not reflect the total dollars wagered at the gaming tables. Individuals playing table games may be betting with winnings for which there is no accurate means of determining, or accounting for, actual dollars wagered.



# APPENDIX

## ILLINOIS GAMING BOARD APPROVED GAMES

### Baccarat/Mini-Baccarat

- Dragon Bonus

### Big Six

### Blackjack (Twenty-one)

- Alternative Blackjack
- Casino Surrender
- Double Exposure 21
- Lucky Ladies
- Lucky Lucky
- Perfect Pairs
- 21+3 Classic
- 21+3 Xtreme
- Bet the Set 21

### Caribbean Draw Poker

### Caribbean Stud Poker

### Craps

- Bonus Craps
- Craps for Cash Option
- Fire Bet

### Give-away

### Four Card Poker

### Let It Ride Poker

### Let It Ride Bonus

- 3 Card Bonus

### Mississippi Stud

- 3 Card Bonus

### Multi-Action Blackjack

### Pai Gow Poker

- Fortune Pai Gow Poker

### Poker

- Poker-Bad Beat

### Red Dog

### Roulette

### Royal Match 21

### Sic Bo

### Single Hand 21

### Spanish 21

### Three Card Poker

- Three Card Poker - 6 Card Bonus

- Three Card Poker - Progressive

### Texas Hold' em Bonus Poker

### Twenty-One Super Bucks

### Ultimate Texas Hold' em

### War

### Wild Aruba Stud

### Electronic Gaming Devices

- Single and Multiple Position, Multi-Game Video Electronic Gaming Device
- Single and Multiple Position, Reel-Type Electronic Gaming Device
- Single and Multiple Position, Single-Game Video Electronic Gaming Device

# APPENDIX

## ILLINOIS LICENSED SUPPLIERS

**AGS Illinois, LLLP**

905 Irving Park Road  
Itasca, Illinois 60143  
Supplier: Electronic gaming devices

**Ainsworth Game Technology, Ltd.**

10 Holker Street  
Newington, NSW Australia 2127  
Supplier: Electronic gaming devices

**American Gaming & Electronics, Inc.**

9500 West 55th Street, Suite A  
McCook, Illinois 60525  
Supplier: Accessory gaming equipment

**Aristocrat Technologies, Inc.**

7230 Amigo Street  
Las Vegas, Nevada 89119  
Supplier: Electronic gaming devices

**Bally Gaming, Inc.**

6601 South Bermuda Road  
Las Vegas, Nevada 89119  
Supplier: Electronic gaming devices

**Cummins-Allison Corporation**

891 Feehanville Drive  
Mount Prospect, Illinois 60056  
Supplier: Kiosks

**Ditronics Financial Services, LLC**

7699 West Post Road  
Las Vegas, Nevada 89113  
Supplier: Kiosks

**Gaming Partners International USA, Inc.**

aka: Paul-Son Gaming Suppliers, Inc.  
1700 Industrial Road  
Las Vegas, Nevada 89102  
Supplier: Table games, dice, chips, cards

**GEMACO, Inc.**

2925 North Seven Highway  
Blue Springs, Missouri 64014  
Supplier: Playing cards, chips, layouts

**Genesis Gaming Solutions, Inc.**

25003 Pitkin Road Suite C100  
Spring, Texas 77386  
Supplier: Bravo pit/poker system

**Global Cash Access, Inc.**

7250 S Tenaya Way, Suite 100  
Las Vegas, Nevada 89118  
Supplier: Kiosks

**GLP Capital, L.P.**

825 Berkshire Boulevard, Suite 200  
Wyomissing, Pennsylvania 19610  
Supplier: Gaming facilities

**Happ Controls, Inc.**

1743 Linneman Road  
Mount Prospect, Illinois 60056  
Supplier: Accessory gaming equipment

**House Advantage, LLC**

1140 North Town Center Drive, Suite 140  
Las Vegas, Nevada 89144  
Supplier: Kiosks

**IGT**

6355 South Buffalo Drive  
Las Vegas, Nevada 89113  
Supplier: Electronic gaming devices

**Incredible Technologies, Inc.**

3333 North Kennicott Avenue  
Arlington Heights, Illinois 60004  
Supplier: Electronic gaming devices

**JCM American Corporation**

925 Pilot Road  
Las Vegas, Nevada 89119  
Supplier: Bill validators

**Konami Gaming, Inc.**

585 Trade Center Drive  
Las Vegas, Nevada 89119  
Supplier: Electronic gaming devices  
casino management system

**Micro Gaming Technologies, Inc.**

4820 Quality Court  
Las Vegas, Nevada 89103  
Supplier: Custom gaming promotional software

**Midwest Game Supply Company**

1119 North Jefferson, P.O.Box 20  
Kearney, Missouri 64060  
Supplier: Dice, table games, layouts

**Multimedia Games, Inc.**

206 Wild Basin Road South, Bldg B  
Austin, Texas 78746  
Supplier: Electronic gaming devices

**NRT Technology Corporation**

10 Compass Court  
Toronto, Ontario  
Canada M1S 5R3  
Supplier: Kiosks

**Patriot Gaming & Electronics, Inc.**

217 North Lindberg Avenue  
Griffith, Indiana 46319  
Supplier: Accessory gaming equipment

**SHFL entertainment, Inc.**

6650 El Camino Drive  
Las Vegas, Nevada 89118  
Supplier: Shuffle machines, electronic gaming devices  
layouts

**Spielo International Canada ULC**

328 Urquhart Avenue  
Moncton, New Brunswick  
Canada E1H 26R  
Supplier: Electronic gaming devices

**Spielo International USA, LLC**

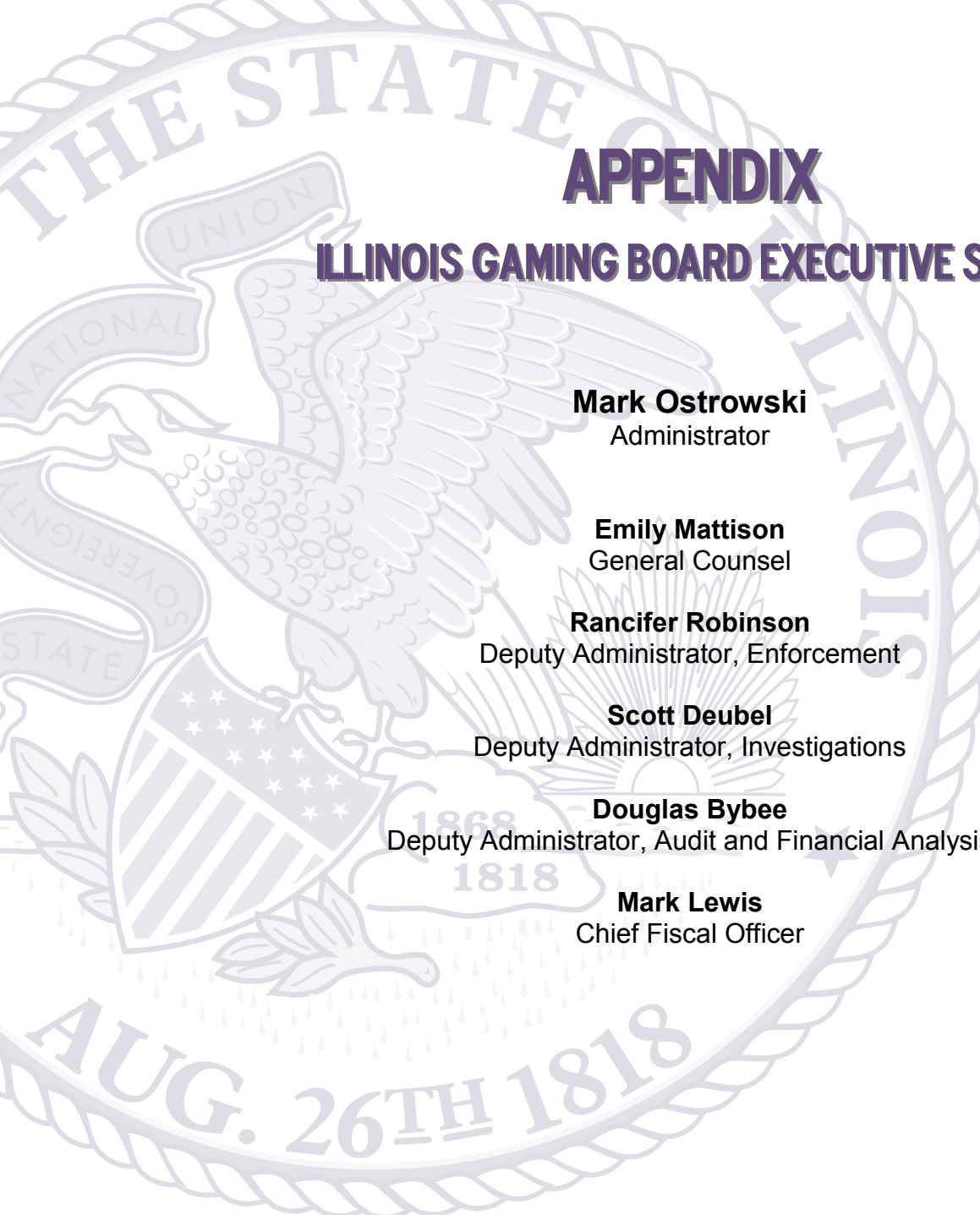
6757 Spencer Street  
Las Vegas, Nevada 89119  
Supplier: Electronic gaming devices

**U.S. Playing Card Company**

300 Gap Way  
Erlanger, Kentucky 41018  
Supplier: Playing cards, dice

**WMS Gaming, Inc.**

800 South Northpoint Boulevard  
Waukegan, Illinois 60085  
Supplier: Electronic gaming devices



# APPENDIX

## ILLINOIS GAMING BOARD EXECUTIVE STAFF

**Mark Ostrowski**  
Administrator

**Emily Mattison**  
General Counsel

**Rancifer Robinson**  
Deputy Administrator, Enforcement

**Scott Deubel**  
Deputy Administrator, Investigations

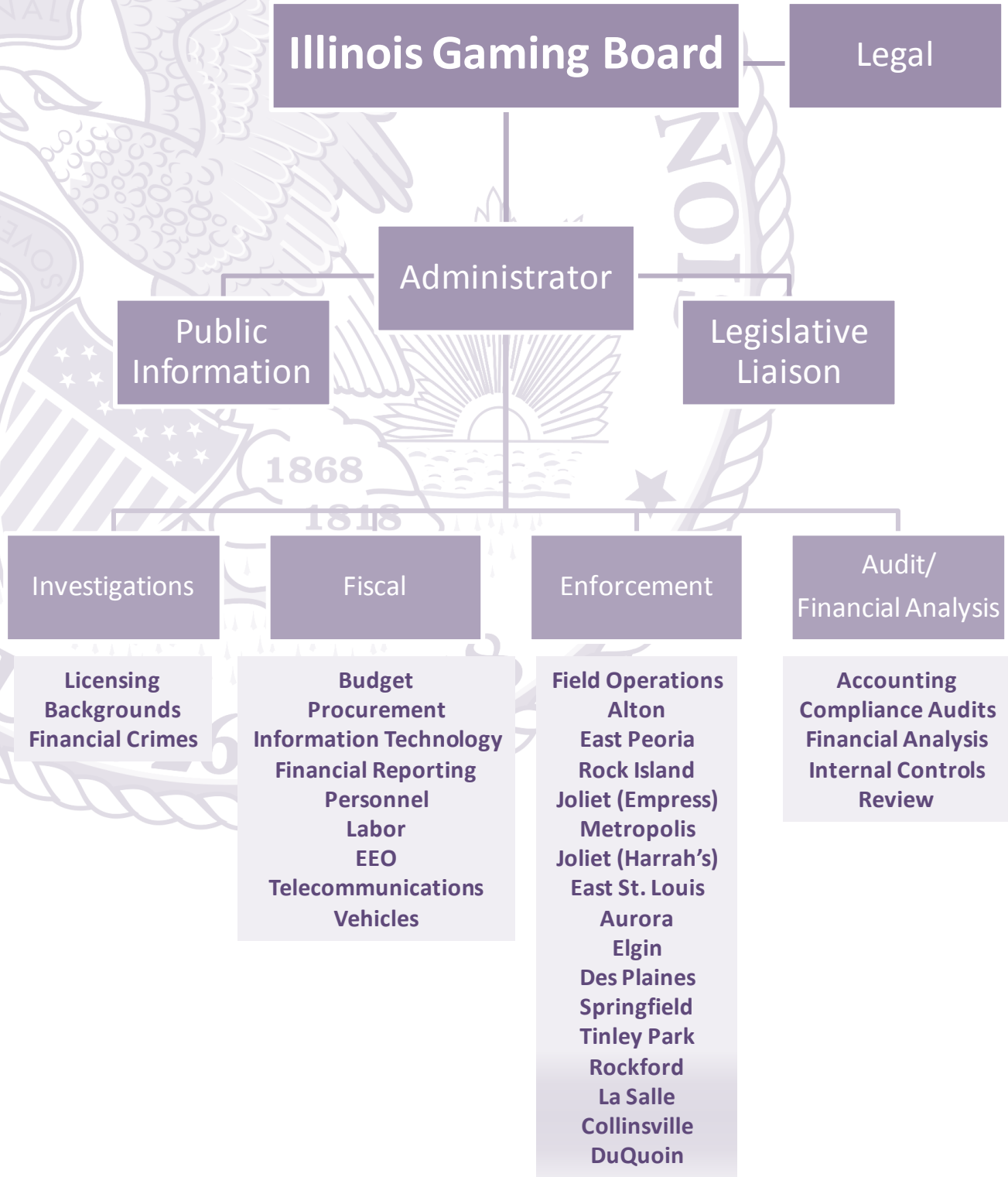
**Douglas Bybee**  
Deputy Administrator, Audit and Financial Analysis

**Mark Lewis**  
Chief Fiscal Officer



# APPENDIX

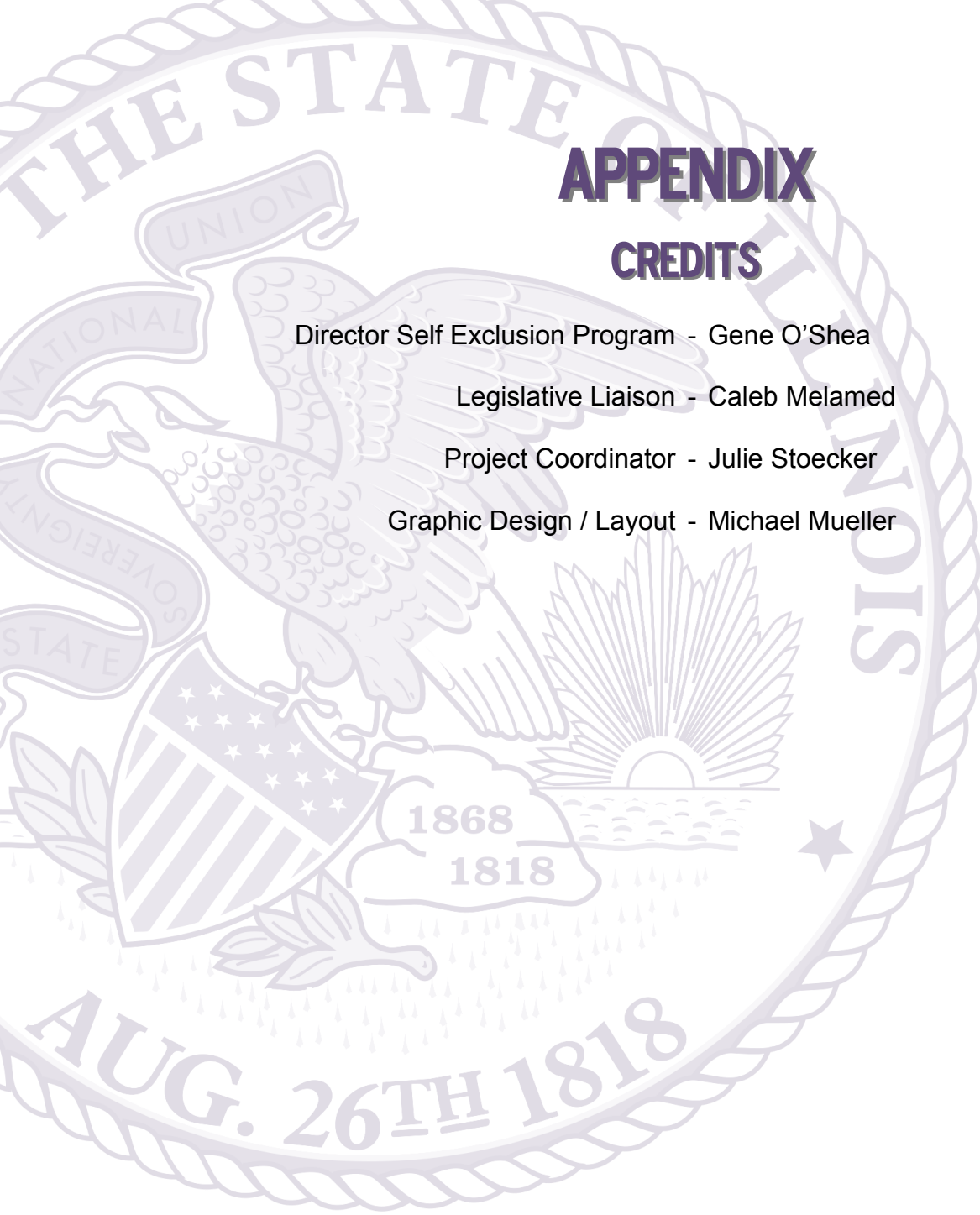
## ILLINOIS GAMING BOARD ORGANIZATIONAL CHART



# APPENDIX

## ILLINOIS GAMING BOARD FISCAL YEAR BUDGET

Line Item	FY 10 Actual	FY 11 Actual	FY 12 Actual	FY 13 Actual	FY 14 Estimated
<b>Operations:</b>					
Personal Services	\$6,402,344	\$6,766,788	\$7,610,227	\$8,348,605	\$11,550,000
Retirement Pick-Up	1,818,819	1,887,845	2,604,276	3,174,530	4,656,000
Social Security	247,255	256,832	297,758	318,297	520,000
Medicare Group Ins.	1,165,760	1,259,806	1,510,241	2,160,419	3,151,000
Contractual	401,920	594,389	344,954	401,110	500,000
Travel	79,049	55,950	45,523	47,274	100,000
Commodities	10,374	14,884	18,301	12,884	20,000
Printing	6,357	3,372	2,404	924	5,000
Equipment	541,575	3,570	9,620	8,974	50,000
EDP	167,099	103,083	98,673	80,626	138,000
Telecommunications	242,490	375,617	265,067	265,318	350,000
Operation of Autos	58,957	82,688	80,777	92,599	93,000
Illinois State Police Expenses	12,154,911	12,966,794	13,793,064	11,997,653	14,875,000
Chicago State University					3,000,000
IL State Police Video Poker		5,282,782	8,645,358	15,514,312	20,975,000
Shared Services	179,164	266,662	327,161	323,744	390,000
<b>Total Operations</b>	<b>\$23,476,074</b>	<b>\$29,921,062</b>	<b>\$35,653,404</b>	<b>\$42,747,269</b>	<b>\$60,373,000</b>
<b>Education Funding</b>	383,000,000	324,200,000	340,027,000	344,611,000	334,000,000
<b>Transfers to Locals</b>	84,564,053	80,986,186	106,280,528	103,555,610	115,000,000
<b>Refunds</b>	10,000	0	0	0	50,000
<b>Grand Total</b>	<b>\$491,050,127</b>	<b>\$435,107,248</b>	<b>\$481,960,932</b>	<b>\$490,913,879</b>	<b>\$509,423,000</b>



# APPENDIX

## CREDITS

Director Self Exclusion Program - Gene O'Shea

Legislative Liaison - Caleb Melamed

Project Coordinator - Julie Stoecker

Graphic Design / Layout - Michael Mueller



# **Illinois Gaming Board — 2013 Annual Report**

Illinois Gaming Board  
160 North LaSalle Street, Suite 300  
Chicago, Illinois 60601  
312 814 – 4700

801 South Seventh Street  
Suite 400 - South  
Springfield, Illinois 62703  
217 524 – 0226