

State of Illinois
Bruce Rauner, Governor

Illinois Gaming Board
Don Tracy, Chairman
Mark Ostrowski, Administrator

Illinois Gaming Board

2014 Annual Report



Table of Contents

The Illinois Gaming Board	Page 2	Page 23	Par-A-Dice Gaming Corporation
Illinois Gaming Board Members	Page 3	Page 27	Rock Island Boatworks, Inc.
Background Information on Riverboat Casino Gambling	Page 6	Page 31	Empress Casino – Joliet, Corporation
Background Information on Video Gaming	Page 7	Page 35	Southern Illinois Riverboat Casino Cruises, Inc.
Year in Review 2014	Page 8	Page 39	Des Plaines Development Limited Partnership
2014 Casino Revenues and Admissions	Page 10	Page 43	Hollywood Casino - Aurora, Inc.
2014 Video Gaming Revenues	Page 12	Page 47	Casino Queen, Inc.
2014 Casino Statistics	Page 13	Page 51	Elgin Riverboat Resort
Sources of Casino Revenue	Page 14	Page 55	Midwest Gaming & Entertainment, LLC
Casino Distribution of Gaming Taxes	Page 15	Page 59	Glossary of Terms
Five Year History	Page 16	Page 60	Illinois Gaming Board Approved Games
Summary of Illinois Riverboat Data	Page 17	Page 61	Illinois Licensed Suppliers
Casino Gaming Win by Jurisdiction	Page 18	Page 62	Illinois Gaming Board Executive Staff
Alton Gaming Company	Page 19	Page 63	Illinois Gaming Board Organizational Chart
		Page 64	Illinois Gaming Board Fiscal Year Budget

The Illinois Gaming Board

The Riverboat Gambling Act was enacted in February 1990, making Illinois the second State in the nation to legalize riverboat gambling. The Act established the Illinois Gaming Board (IGB or Board) and authorized it to grant up to ten casino licenses. On September 11, 1991, the first riverboat casino began operation in Alton. Currently all ten licenses are active. In 2009 the Legislature passed the Video Gaming Act, which established video gaming in Illinois under the jurisdiction of the Board. To view a copy of either Act and the Board's Adopted Rules, visit the Board's website at www.igb.illinois.gov.

The Board consists of five members appointed by the Governor and confirmed by the Senate. The Board administers regulatory, law enforcement and tax collection responsibilities for casino and video gambling in Illinois.

The Board's staff conducts audit, legal, enforcement, investigative, operational and financial analysis activities to ensure the integrity of riverboat and video gambling in Illinois as mandated by the Acts. The Board licenses gaming operations and personnel associated with riverboat and video gambling based on the Board's staff's criminal background and financial investigation of such personnel.

The Board's staff includes approximately 284 agency employees, including a detail of 118 Illinois State Police employees. Individuals may not be employed by the Board if their spouse, parent or child is an official of, or has a financial interest in or a financial relationship with, any entity or individual engaged in gambling operations in Illinois.



Illinois Gaming Board Members

Judge Aaron Jaffe, Chairman



JUDGE AARON JAFFE is serving his second term as Chairman of the Illinois Gaming Board. He was first appointed to the Board on March 21, 2005 and reappointed by Governor Patrick Quinn on October 24, 2011. Judge Jaffe was in private practice from 1953 to 1985. He served in the Illinois House of Representatives (1971 to 1985) where he Chaired both the Judiciary Committee and the Rape Study Committee, and Co-chaired the Legislative Investigating Committee. Other legislative assignments included the Rules, Public Utilities, Environment, Elementary and Secondary Education, Higher Education, Human Resources, Agriculture and Revenue committees. Judge Jaffe was the principal sponsor of legislation that resulted in major changes in the law such as the present Marriage and Dissolution of Marriage Act, the new Criminal Sexual Assault Statutes and the 1984 Parentage Act. While serving as the House Judiciary Committee Chair, Judge Jaffe aided in enacting present statutes such as the Business Corporation, Independent Administration Probate, and Illinois Freedom of Information Acts. He received six Best Legislator Awards from the Independent Voters of Illinois, including the Ethel Parker Award and three Legislator of the Year Awards from the Illinois Education Association. Judge Jaffe also received Environmental Awards from the Illinois Environmental Council for every term he served in the Legislature. He received a Citation from the Committee on Courts and Justice and the Jane Adams Award from the Illinois Women's Political Caucus. Judge Jaffe served as a Cook County Circuit Court Judge from 1985 until his retirement in 2004, serving in both the Law and Chancery Divisions. In the Law Division, Judge Jaffe adjudicated personal injury, medical malpractice and product liability cases. In the Chancery Division, Judge Jaffe presided over corporate and partnership disputes, contract matters, insurance litigation, class actions, zoning cases, administrative law matters, condominium disputes, church litigation, real estate litigation and other complex equitable cases. In 1990, he was awarded Judge of the Year in Domestic Relations Division by his fellow Judges. Judge Jaffe is the founding President of the Jewish Judges of Illinois and has received mediation training at the National Judicial College. He was a Member of Chief Justice Warren Burger's Prison Industries Task Force and also taught and was an adjunct professor at the University of Loyola School of Law. He has been a speaker and lecturer many times during his career.

Illinois Gaming Board Members

Lee A. Gould



LEE A. GOULD is the managing partner of Gould & Pakter Associates LLC, an accounting and business consulting firm. Mr. Gould is an attorney and a Certified Public Accountant, and has more than 30 years of experience performing valuations of closely held businesses, financial damages determinations and forensic accounting investigations. Mr. Gould provides business valuation and business valuation consulting services to trial lawyers and their clients. He performs business valuations for family law matters, shareholder dissent and oppression litigation, estate and gift tax purposes and buy/sell agreements. Mr. Gould performs lost profit and financial damages calculations in commercial litigation matters including breach of contract and business interruption claims. Mr. Gould performs forensic accounting analyses to assist in locating unreported or hidden assets, determining the source of funds used to acquire assets, determining the reasonableness of contract and/or project related costs and investigating claims of misappropriation. He has provided litigation consulting services in a variety of industries including manufacturing, distribution, retail, construction, financial services, professional service corporations and real estate. He also designs and presents continuing education programs for the American Institute of Certified Public Accountants, the Illinois CPA Society, the Chicago Bar Association, the American Bar Association and law firms. He is a Certified Fraud Examiner; Certified in Financial Forensics; and an accredited Business Valuator. In addition, Mr. Gould is a member of the Gastro Intestinal Research Foundation, where he serves as Executive Vice President in 2011 and as a Member of Board of Directors from 2007 to the present. He is president (2012), ex-officio member (2011) of the Board of Directors of the CPA Endowment Fund of Illinois. Mr. Gould is a member of the Illinois CPA Society where he served as the Chairman 2009 of the Board of Directors and has held a variety of leadership positions over the years. He has been a member of the Business Valuation Conference Task Force (2001 through 2010), a Member of the Family Law Conference Task Force (2006 and 2007), and a Member of Business Valuation Special Interest Group. He is a member of the Advisory Board of the Schiller DuCanto and Fleck Family Law Center Advisory Board. In addition he is a member of the American Institute of Certified Public Accountants; the Association of Certified Fraud Examiners; the American Society of Appraisers (candidate member), the American Bar Association, the Illinois State Bar Association and the Chicago Bar Association. Mr. Gould's term expires July 1, 2015.



Michael Holewinski

MICHAEL HOLEWINSKI is the President of Ace Industries, a Chicago manufacturer and metal finisher. He currently serves as Vice Chairman of the Board of Directors of the Illinois Manufacturers' Association and will become Board Chairman in 2012. He is also an attorney licensed to practice law in the State of Illinois. From 1974 through 1978, he was a Representative in the Illinois General Assembly. As a State Representative, he sponsored and passed into law two of the first anti-redlining laws in the U.S. aimed at curbing abuses in the banking and mortgage banking industries. He served as Chairman of the Committee on Illinois Government and was a member of the Illinois Commission on Children, the Statewide Health Coordinating Council and the Chicago Economic Development Commission. From 1983 to 1987, he was Administrative Assistant to Mayor Harold Washington and in that capacity chaired the Mayor's Public Safety and Regulatory Subcabinet. He had lead responsibility for many of the Mayor's major initiatives including those directed at Gang Crimes and Ethics Reform. He also led Mayor Washington's reform of the taxi cab industry in Chicago. As President of Ace Industries, Mr. Holewinski has guided the company through a series of strategic acquisitions. The Company has received numerous awards for its efforts to protect the environment.

Illinois Gaming Board Members

Maribeth Vander Weele



Maribeth Vander Weele has overseen thousands of investigations and analyses in the public and private sectors. A former Inspector General, Ms. Vander Weele is founder of the Vander Weele Group and its online research division, Sagerity Investigative Intelligence. In the private sector, Ms. Vander Weele has consulted for American manufacturers in China, Malaysia, Singapore and Mexico. Remotely, her firm has worked on matters in the Middle East, Chile, Brazil, and Europe. Clients range from Fortune 500 companies and hedge funds

to federal agencies and educational institutions. Ms. Vander Weele began her career as a news reporter. In 1994, she authored *Reclaiming Our Schools, the Struggle for Chicago School Reform*, based on her investigative reporting for the *Chicago Sun-Times*. The book became the roadmap for the reform of the \$3.8 billion Chicago Public School system, which was then mired in allegations of corruption. In 1995, Ms. Vander Weele joined the turnaround team for the system, spearheading integrity initiatives that enabled the system - for the first time in more than two decades - to achieve an investment-grade rating that permitted the launch of a multi-billion construction program. Ms. Vander Weele directly managed departments involving investigations, internal audit, and security. During this time, the Illinois state legislature and the school system adopted and implemented dozens of recommendations from Ms. Vander Weele's book. In 1998, Mayor Richard M. Daley appointed her as Inspector General of the school system, where she managed a staff that investigated thousands of allegations of employee and vendor misconduct. A Certified Protection Professional and a Certified Inspector General, Ms. Vander Weele became President of the Illinois Association of Inspectors General during that time. For her work in education, Ms. Vander Weele has been profiled in the *Wall Street Journal*, *Teacher Magazine*, *Education Week*, and in the 1998 book, *Extraordinary Ordinary Women Making a Difference*. Her work is cited in the book, *Battling Corruption in America's Public Schools*. In 2009, Illinois Governor Patrick Quinn appointed Ms. Vander Weele to an investigatory panel to address abuses in the University of Illinois admissions process. Ms. Vander Weele has lectured at Harvard University, the National Business Roundtable, the Association of Inspectors General, the National Association of Local Government Auditors, the Illinois CPA Society, the Chicago Chapter of the Association of Certified Fraud Examiners, the Public Broadcasting System, the National Education Writers Association, the Golden Apple Foundation, Kellogg Graduate School of Management at Northwestern University, the University of Chicago Graduate School of Business, and in many other forums nationwide and in Canada. She has received honors and earned membership in Count-Me-In for Women's Economic Independence, Athena PowerLink, and the Clinton Foundation. Ms. Vander Weele served as a board member for Time Dollar Tutoring, a Chicago not-for-profit organization that provided tutoring and computers to disadvantaged youth. Ms. Vander Weele is a graduate of Wheaton College in Wheaton, Illinois.

~ Note ~

Governor Bruce Rauner appointed Mr. Don Tracy as Chairman and Judge Thomas A. Dunn as a Board Member of the Illinois Gaming Board on February 2, 2015.

Background Information on Riverboat Casino Gambling

Each riverboat gaming operation (casino) is authorized to offer up to 1,200 gaming positions, consisting of a mix of electronic gaming devices and table games. In 1999 the Act was amended to permit all casinos to permanently moor at docksites, without conducting cruises on any waterway. Patrons must be 21 years of age to be admitted to the gambling areas of each casino. All wagering in the casinos must be cashless. The Act imposes two taxes on casinos: Casino Admissions Tax and Casino Privilege or Wagering Tax.

Effective August 23, 2005, the Legislature set the admissions tax at \$2 per person for patrons of Jumer's Casino Rock Island. For all other casinos the admissions tax is set at \$3 per person. Revenues from the casino admissions tax are deposited into the State Gaming Fund, a special fund in the state treasury. From each admission, \$1 goes to the host community where a casino is located and the remainder is distributed from the State Gaming Fund in the same manner as revenues collected from the wagering tax (see below).

The privilege or wagering tax is collected as a percentage of receipts from gaming play and are deposited into the State Gaming Fund. They are computed as a percentage of Adjusted Gross Receipts (AGR), defined as gross receipts less winnings paid to bettors. The majority of revenues in the State Gaming Fund are transferred to the Education Assistance Fund, a general fund which can be used for any purpose relating to public education. Five percent of the AGR from each casino is distributed to the hosting local government. Monies deposited into the State Gaming Fund are also used to fund the Gaming Board's administrative and operational expenses. The General Assembly also provided that 2% of total AGR from the 10th Riverboat gaming license (Rivers Casino in Des Plaines) is designated to the Cook County criminal justice system. Starting on July 1, 2013 an annual transfer of \$1,600,000 was also designated from the State Gaming Fund to the Chicago State University Education Improvement Fund. Finally, in 2013 the Legislature provided for a monthly transfer of \$5,530,000 from the State Gaming Fund into the School Infrastructure Fund and a one-time transfer of \$92,000,000 from the State Gaming Fund into the School Infrastructure Fund.

Since the passage of the Riverboat Gambling Act, the Legislature has amended the wagering tax from a flat 20 percent to a graduated rate. Effective July 1, 2005 the wagering tax is as follows:

- ◆ 15% of AGR up to and including \$25 million;
- ◆ 22.5% of AGR in excess of \$25 million but not exceeding \$50 million;
- ◆ 27.5% of AGR in excess of \$50 million but not exceeding \$75 million;
- ◆ 32.5% of AGR in excess of \$75 million but not exceeding \$100 million;
- ◆ 37.5 % of AGR in excess of \$100 million but not exceeding \$150 million;
- ◆ 45% of AGR in excess of \$150 but not exceeding \$200 million;
- ◆ 50% of AGR in excess of \$200 million.

Background Information on Video Gaming

The Video Gaming Act authorizes the installation of up to five licensed video gaming terminals (VGTs) in licensed establishments where liquor is served for consumption on the premises, as well as in licensed fraternal establishments, licensed veterans establishments and licensed truck stops. All licenses are issued by the IGB, and the holding of a valid liquor license does not, in itself, guarantee qualification for a video gaming license. Under the Video Gaming Act a licensed truck stop does not need to have a liquor license to participate in video gaming but must sit on at least three acres of land with a convenience store, have separate diesel islands for fueling commercial vehicles, sell over 10,000 gallons of diesel or biodiesel fuel a month and have parking spaces for commercial motor vehicles.

In order to determine how much money is wagered and won, and to ensure the integrity of video gaming, all licensed VGTs are monitored by the IGB through a Central Communications System (CCS). The CCS provides real-time communication with and control over every licensed VGT in Illinois. The CCS was constructed and is being maintained by Scientific Games International.

Net terminal income (NTI) is defined as the money put into a VGT minus the credits paid to the player. The State receives 30 percent of the NTI generated from each licensed VGT. Of the state's portion, five percent goes to the local municipality where the licensed VGT operates. Of the remaining 70 percent of NTI, Scientific Games receives 0.7275 percent as compensation for building and maintaining the CCS. The remaining income is divided equally (by law, an even 50/50 split) between the terminal operator (who owns/leases and places the VGTs in locations) and the licensed locations.

The Video Gaming Act gives local communities and counties the option to pass an ordinance to opt out of video gaming. Even though a specific ordinance permitting video gaming is not required, by the end of 2014, a total of 932 communities and counties enacted ordinances that specifically allow video gaming. The IGB knows of 175 additional communities whose ordinances prohibit gambling – either specifically passed in response to the Video Gaming Act or an ordinance that was in effect prior to the Act. counties have enacted ordinances that specifically allow video gaming. The IGB knows of 195 additional communities that have a gambling prohibition in their ordinance – either specifically passed in response to the Video Gaming Act or an ordinance that was in effect prior to the Act.



Year in Review 2014

Riverboat Gambling 2014

In 2014, the IGB continued to regulate the 10 riverboat casino operations in Illinois along with all related licensees.

- In February, the Board approved a major redevelopment project by the Harrah's Metropolis Casino. Under this plan, the casino floor was moved inland to the event center adjacent to the casino hotel. The relocated casino floor opened on November 19th. A major Ohio River flood forced the temporary closure of the casino in April 2011, causing extensive property damage and lost revenue. In addition to offering a new and updated facility, the relocation will safeguard the casino from future incidents of flooding.
- In July, the IGB renewed the owners license of Empress Casino Joliet Corp. d/b/a Hollywood Casino Joliet for a term of 4 years expiring in July 2018.

The Board issued or renewed the following Suppliers' licenses:

- Data Financial, Inc. (initial license, expiring in January 2015).
- Novomatic Americas Sales, LLC (initial license, expiring in May 2015).
- Global Cash Access, Inc. (renewed four years, expiring in December 2017).
- Happ Controls, Inc. (renewed four years, expiring in March 2018).
- GTECH USA, LLC (renewed four years, expiring in March, 2018).
- Gemaco, Inc. (renewed four years, expiring in April 2018).
- House Advantage, LLC (renewed four years, expiring in May 2018).
- Ditronics Financial Services, LLC (renewed four years, expiring in August 2018).
- GLP Capital, L.P. (renewed four years, expiring in September 2018).
- Ainsworth Game Technology, Ltd. (renewed four years, expiring in October 2018).

In 2014, the Board issued a total of 1,649 occupational licenses, including 1,114 Level 3 occupational licenses, 518 Level 2 occupational licenses, and 17 Level 1 occupational licenses. In the same period, the Board denied eight occupational license applications.

"Key persons" are defined under Gaming Board rules persons able to control, or exercise significant influence over, the management, assets, or operating policies of an owner or supplier licensee. In 2014, the Board found suitable 77 individuals and positions as key persons.

The background of the page features a large, faint, circular seal of the State of Illinois. The seal contains the text "THE STATE OF ILLINOIS" around the top and "JANUARY 1818" at the bottom. In the center is a shield with a plow, a sheaf of wheat, and a star, with the word "UNION" on a banner above it.

Year in Review 2014

Casino Social Investment

The Board has acted as a strong advocate on behalf of increased participation by minorities and women in the gaming industry. Specifically, in connection with the license approval and renewal process, the Board reviews the efforts of all owner licensees in hiring minority and women employees, providing opportunities for employee training and promotion, establishing outreach efforts towards women and minority contractors, and making charitable contributions to community organizations (both in terms of funds and volunteer hours).

With encouragement of the Board, supplier diversity networking fairs have been established throughout the State, with most of the State's casinos serving as hosts. During 2014, three major diversity networking events took place. On April 10th and 11th, the 47th Annual Chicago Business Opportunity Fair, organized by the Chicago Minority Business Development Council, was held at Navy Pier in Chicago. The Illinois Casino Gaming Association ("ICGA"), an umbrella trade group of Illinois casinos, sponsored and participated in the fair for the eighth year in a row and hosted a booth. On July 10th through 12th, the Illinois State Black Chamber of Commerce hosted a convention in Chicago in conjunction with the National Black Chamber of Commerce. ICGA is a member of the Black Chamber of Commerce, and participated in presentations, seminars, and by hosting an informational table. On November 20th, a diversity fair was held at the Elgin Grand Victoria Casino. Purchasing agents from each of the Illinois casinos, local government officials, members of the community, and IGB representatives were present at these events, making them invaluable forums for minority vendors seeking new business opportunities in gaming.

In compliance with a mandate in Public Act 98-490, the Board has published proposed rules establishing goals for the award of contracts by riverboat owners licensees to businesses owned by minorities, females, and persons with disabilities.

Casino Disciplinary Actions


Criminal Enforcement Proceedings

The Board has continued to aggressively pursue its criminal enforcement mandate. In 2014, Board agents conducted 1,433 criminal enforcement investigations and made 750 arrests.

In 2014, as part of its continuing efforts to maintain the integrity of riverboat gaming, the Board or the Board's Administrator issued a total of 38 disciplinary complaints against occupational licensees based on violations of the Act or Rules. In this period, the Board did not take any disciplinary action against Owners or Supplier licensees.

Year in Review 2014

Casino Self-Exclusion Program for Problem Gamblers



In 2002, the Board implemented a voluntary self-exclusion program for problem gamblers. The program was created to help compulsive gamblers regain control of their lives by giving those persons the ability to ban themselves from Illinois casinos. The Board maintains a confidential database that contains identifying information about each person who enrolls in the program. Key information is shared with the State's casinos to ensure that those who have self-excluded cannot cash checks or obtain credit at an Illinois casino. In addition, the State's casinos are prohibited from sending marketing material to persons on the Board's Self-Exclusion List.

At the time of enrollment in the program, a Self-Excluded person agrees not to enter or gamble in any casino in Illinois. A Self-Excluded person also agrees to donate all chips, tokens and vouchers in his or her possession to one of three Department of Human Services (DHS) designated agencies if they are caught returning to an Illinois casino. Those organizations include The Illinois Council on

Problem Gambling, the Illinois Institute for Addiction Recovery and the Outreach Foundation for Problem and Compulsive Gamblers. By the end of 2014, persons who enrolled in the Program and subsequently returned to Illinois casinos had donated approximately \$1,568,377 in gambling proceeds to the three DHS designated organizations.

There has been a steady increase in the number of enrollees since the program was implemented. Those wishing to enroll in the program must fill out the required application forms available at twenty-one locations in Illinois and six in Iowa. A complete listing of enrollment sites can be found on the Board's website or by calling 1-877-YOU-QUIT or (312) 814-8832. In 2014, a total of 661 persons enrolled in the Self-Exclusion Program bringing the total enrollment to 11,099 at the end of the year.

2014 Casino Revenues and Admissions

The total AGR from all riverboat casinos for 2014 amounted to \$1.465 billion, a decrease of 5.6 percent from the \$1.552 billion AGR in 2013. Admissions in 2014 were 13,518,053 a 9.2 percent decrease from the 14,891,745 admissions in 2013.

In 2014 the State Gaming Fund collected a total of \$500,600,310 in wagering and admission taxes. The State share of taxes collected was \$413,813,842 a decrease of 6.8 percent from the State share of taxes collected in 2013. Of that amount, \$86.8 million was paid to host communities, a decrease of 6.2 percent from the \$92.5 million paid in 2013.

Year in Review 2014

Video Gaming 2014

By the close of 2014, video gaming expanded to 4,675 live locations throughout Illinois with a total of 19,182 active VGTs. Video gaming in Illinois has proven to be both a regulatory and technical success as well as an important adjunct to State revenues.

The Board continues to receive and review numerous applications for various video gaming licenses. In connection with the applications, Board investigators conducted thousands of investigations of individuals and entities. In 2014, the IGB approved new locations at an average rate of over 134 per month.

The success of video gaming has caused local communities which previously had prohibited it to reconsider their earlier bans. The Committee on Governmental Forecasting and Accountability (COGFA) estimates that at least 64.9% of local governments, representing 52% of the State's population, now allow video gaming within their jurisdictions, and 12% of local governments currently prohibit video gaming. For 23.1% of the local governments in Illinois, COGFA lists the status of video gaming as "unknown." By far the largest local jurisdiction prohibiting video gaming is the City of Chicago, which contains 21% of the State's population. Most large communities which continue to prohibit video gaming are located in the Chicago area.

Video Gaming License Applications

During 2014, the Board has continued to conduct vigorous licensing activity. The following table shows the total number of license approvals, denials, and renewals:

	Initial Approvals	Renewals	Denials
Locations	1475	2694	131
Terminal Operators	7	66	7
Manufacturers	1	11	0
Distributors	1	14	0
Suppliers	1	9	0
Technicians	18	63	2
Terminal Handlers	448	744	24

2014 Illinois Gaming Revenues

Video Gaming Disciplinary Action

In 2014, the Board issued 41 disciplinary complaints against video gaming licensees for conduct in violation of the Video Gaming Act and Rules. Discipline has ranged from the revocation of licenses to the imposition of fines.

Criminal Enforcement Proceedings

The Board has vigorously investigated persons with financial or institutional ties to video gaming applicants and licensees. During calendar year 2014, the Board has completed 4,042 investigations of Persons with Significant Influence or Control ("PSICs"), and 239 investigations of Statutorily Identified Persons ("SIPs") and Other Interested Persons ("OIPs").



2014 Video Gaming Revenues

The 2014 year-end net terminal income was \$659,511,404.62 compared to \$300,681,363.29 in 2013, an increase of 119.4%. During this past year, there were 19,182 active video gaming terminals operating in Illinois, a 43.4% increase from the 13,374 terminals operating in 2013.

In 2014 the 30% state share of Net Terminal Income totaled \$197,854,945.41 representing an increase of 119.4% over the \$90,171,553.51 collected in 2013. The state's share of the NTI in 2014 was \$164,879,180.45 compared to the \$75,142,032.53 received in 2013. The host communities where those machines are located received \$32,975,764.96 in 2014 compared to \$15,029,520.98 in 2013.

The Board posts monthly revenue figures on its website for both casino and video gambling.

2014 Statistics

	2013	2014	% Change
Gross Receipts	\$1,551,311,772	\$1,463,418,253	-5.67%
Adjusted Gross Receipts (AGR)	\$1,552,039,190	\$1,465,366,278	-5.58%
Number of Table Games	275	278	1.09%
Table Drop	\$1,507,112,612	\$1,481,586,745	-1.69%
Table AGR	\$267,846,398	\$270,860,357	1.13%
AGR/Table/Day	\$2,672.85	\$2,671.56	-0.05%
Table Game AGR to Drop %	17.8%	18.3%	2.81%
Number of EGD's	11,275	10,926	-3.10%
EGD Handle	\$14,526,003,622	\$13,253,553,217	-8.77%
EGD AGR	\$1,283,465,374	\$1,192,557,896	-7.08%
AGR/EGD/Day	\$312.38	\$299.28	-4.19%
EGD AGR to Handle %	8.8%	9.0%	2.27%
Admissions	14,891,745	13,518,053	-9.22%
Gross Receipts Per Admission	\$104.17	\$108.26	3.93%
Total Tax	\$536,699,138	\$500,600,310	-6.73%
Wagering Tax	\$493,226,411	\$461,118,691	-6.51%
Admission Tax	\$43,472,727	\$39,481,619	-9.18%
Other Revenues	\$104,247,078	\$212,746,179	104.08%

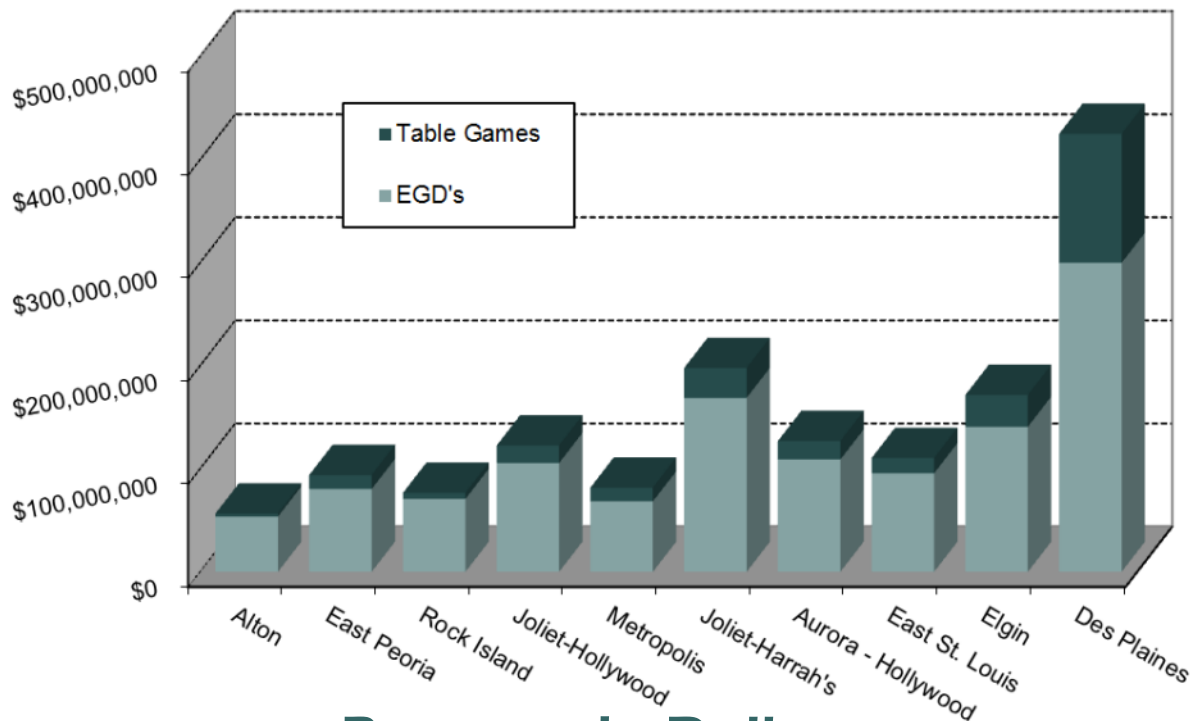
* Gross Receipts do not reflect chip float, expired vouchers and prior period adjustments

Sources of Revenue

Table Games and Electronic Gaming Devices

Docksite	Gross Receipts	Table Games	% of Total	EGD	% of Total
Alton Belle	\$56,539,603	\$2,999,070	5.3%	\$53,540,533	94.7%
E. Peoria Par-A-Dice	93,953,203	13,645,379	14.5%	80,307,824	85.5%
Casino Rock Island	76,655,771	5,906,081	7.7%	70,749,690	92.3%
Joliet-Hollywood	122,595,482	16,978,562	13.8%	105,616,920	86.2%
Metropolis-Harrah's	81,728,724	13,397,621	16.4%	68,331,103	83.6%
Joliet-Harrah's	197,822,301	28,992,469	14.7%	168,829,832	85.3%
Aurora-Hollywood	126,913,867	17,939,497	14.1%	108,974,370	85.9%
E. St. Louis Casino Queen	110,501,775	14,832,371	13.4%	95,669,404	86.6%
Elgin Grand Victoria	171,623,785	30,904,163	18.0%	140,719,622	82.0%
Des Plaines Rivers Casino	425,083,742	125,265,144	29.5%	299,818,598	70.5%
Total	\$1,463,418,253	\$270,860,357	18.5%	\$1,192,557,896	81.5%

* Gross Receipts do not reflect chip float, expired vouchers and prior period adjustments



Revenue in Dollars

Distribution of Gaming Taxes

Distributions to Local Governments

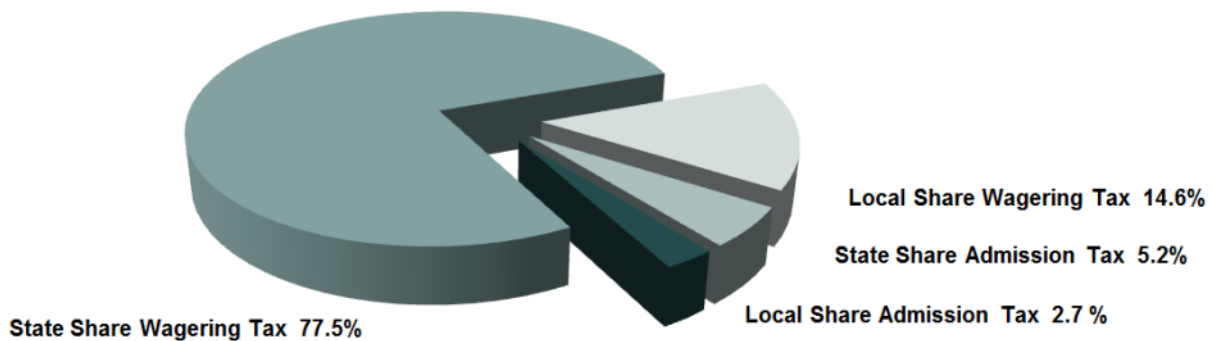
	2010	2011	2012	2013	2014	% Change 14 to '13
Alton	\$4,903,732	\$4,598,773	\$4,425,285	\$3,966,860	\$3,475,847	-12.38%
East Peoria	7,073,458	6,984,629	7,020,467	6,459,369	5,698,684	-11.78%
Rock Island	5,354,352	5,625,634	5,691,791	5,280,398	4,906,740	-7.08%
Joliet	22,975,414	21,810,943	20,825,968	19,583,121	18,811,201	-3.94%
Metropolis	6,621,939	5,559,086	5,652,802	4,946,695	4,751,882	-3.94%
Aurora	10,546,682	10,157,711	8,968,877	8,350,381	7,441,119	-10.89%
E St. Louis	8,596,621	8,455,040	8,427,048	7,918,236	6,947,279	-12.26%
Elgin	16,479,803	14,730,214	12,275,581	11,326,522	9,961,072	-12.06%
Des Plaines		10,819,591	24,802,456	24,662,123	24,792,544	0.53%
Total	\$82,552,001	\$88,741,621	\$98,090,275	\$92,493,705	\$86,786,368	-6.17%

State Share of Gaming Taxes

Distribution	Admission Tax	Wagering Tax	Total
2013	\$28,580,982	\$415,624,451	\$444,205,433
2014	\$25,963,566	\$387,850,376	\$413,813,942
% Change	-9.16%	-6.68%	-6.84%

Local Share of Gaming Taxes

Distribution	Admission Tax	Wagering Tax	Total
2013	\$14,891,745	\$77,601,960	\$92,493,705
2014	\$13,518,053	\$73,268,315	\$86,786,368
% Change	-9.22%	-5.58%	-6.17%



Distribution of Gaming Taxes - 2014

Five Year History

	2010	2011	2012	2013	2014
Licensees	9	** 10	** 10	** 10	** 10
Gross Receipts	\$1,373,421,897	\$1,477,600,520	\$1,638,167,885	\$1,551,311,772	\$1,463,418,253
Table Games	\$171,545,773	\$205,698,256	\$261,811,426	\$267,846,398	\$270,860,357
EGD	\$1,201,876,124	\$1,271,902,264	\$1,376,356,459	\$1,283,465,374	\$1,192,557,896
Admissions	13,834,414	14,801,944	16,157,869	14,891,745	13,518,053
Gross Receipts Per Admission	\$99.28	\$99.82	\$101.39	\$104.17	\$108.26
Total Tax	\$466,073,453	\$489,422,453	\$574,336,421	\$536,699,138	\$500,600,310
Wagering Tax	\$425,952,813	\$446,348,998	\$527,161,053	\$493,226,411	\$461,118,691
Admission Tax	\$40,120,640	\$43,073,455	\$47,175,368	\$43,472,727	\$39,481,619
State Share	\$383,521,452	\$400,680,832	\$476,246,146	\$444,205,433	\$413,813,942
Local Share	\$82,552,001	\$88,741,621	\$98,090,275	\$92,493,705	\$86,786,368

* Gross Receipts do not reflect chip float, expired vouchers and prior period adjustments

** Des Plaines Rivers Casino opened July 18, 2011



Summary of Illinois Riverboat Data

Month	Adm	Gross Receipts	Taxes Collected		Win Per
	Total	Total	State	Local	Adm
1991 Total	308,783	14,942,909	2,550,219	1,055,928	48.39
1992 Total	4,079,819	226,334,794	38,030,038	15,396,559	55.48
1993 Total	10,679,490	605,684,483	101,532,162	40,963,714	56.71
1994 Total	20,367,119	979,551,111	167,299,786	69,344,675	48.09
1995 Total	24,835,833	1,178,311,827	201,582,607	83,751,424	47.44
1996 Total	25,211,329	1,131,491,531	194,935,059	81,785,905	44.88
1997 Total	24,972,139	1,054,573,793	183,158,208	77,700,829	42.23
1998 Total	24,813,818	1,106,751,600	256,782,080	80,117,488	44.60
1999 Total	21,991,689	1,362,931,231	328,665,137	90,132,196	61.97
2000 Total	19,014,939	1,658,004,361	410,328,901	101,884,222	87.19
2001 Total	18,808,281	1,783,958,166	447,228,898	107,975,415	94.85
2002 Total	18,821,582	1,831,550,836	555,702,432	110,399,391	97.31
2003 Total	16,597,552	1,709,943,480	617,797,595	102,060,624	103.02
2004 Total	15,331,021	1,717,991,115	700,930,079	101,230,939	112.06
2005 Total	15,323,166	1,798,912,344	644,462,903	105,282,514	117.40
2006 Total	16,180,360	1,923,528,409	717,881,351	112,358,413	118.88
2007 Total	16,525,437	1,983,386,762	718,157,094	115,727,277	120.02
2008 Total	14,637,054	1,568,727,252	473,648,638	93,095,279	107.18
2009 Total	14,418,760	1,428,923,092	409,510,245	85,885,708	99.10
2010 Total	13,834,414	1,373,421,897	383,521,452	82,552,001	99.28
2011 Total	14,801,944	1,477,600,520	400,680,832	88,741,621	99.82
2012 Total	16,157,869	1,638,167,885	476,246,146	98,090,275	101.39
Jan	1,175,205	123,141,042	15,130,335	7,333,941	104.78
Feb	1,168,885	124,350,415	18,904,583	7,388,438	106.38
Mar	1,397,559	149,058,307	29,324,189	8,856,646	106.66
Apr	1,277,396	134,503,215	31,967,451	8,003,831	105.29
May	1,326,388	137,732,198	37,874,486	8,221,172	103.84
June	1,260,926	131,399,244	39,405,844	7,825,199	104.21
July	1,330,027	132,116,950	43,554,053	7,928,339	99.33
Aug	1,315,899	135,152,660	46,069,016	8,081,941	102.71
Sept	1,215,437	125,458,407	44,622,206	7,498,515	103.22
Oct	1,192,713	123,008,498	46,537,670	7,335,358	103.13
Nov	1,168,320	120,740,848	46,083,571	7,219,229	103.35
Dec	1,062,990	114,649,988	44,732,029	6,801,096	107.86
2013 Total	14,891,745	1,551,311,772	444,205,433	92,493,705	104.17
Jan	948,565	106,475,829	13,123,654	6,327,535	112.25
Feb	1,030,949	115,296,557	17,176,664	6,800,553	111.84
Mar	1,240,117	138,489,748	26,497,134	8,174,906	111.67
Apr	1,164,661	127,378,960	30,098,652	7,546,207	109.37
May	1,214,262	129,356,167	34,733,496	7,697,448	106.53
June	1,129,600	117,269,041	35,004,626	6,981,651	103.81
July	1,205,564	124,847,334	39,794,227	7,445,138	103.56
Aug	1,216,566	128,010,687	42,744,349	7,611,307	105.22
Sept	1,081,670	118,131,121	41,128,315	6,989,313	109.21
Oct	1,101,955	119,649,148	43,386,571	7,106,293	108.58
Nov	1,071,324	116,722,907	43,422,290	6,901,405	108.95
Dec	1,112,820	121,790,754	46,703,964	7,204,612	109.44
2014 Total	13,518,053	1,463,418,253	413,813,942	86,786,368	108.26

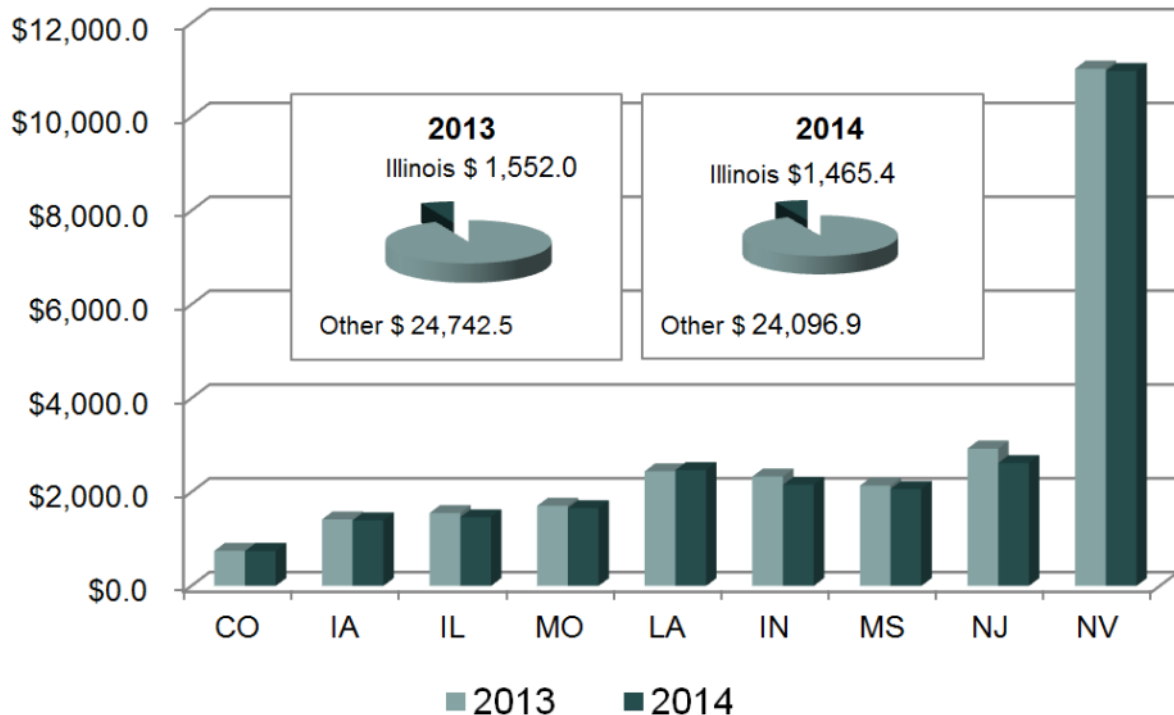
* Gross Receipts do not reflect chip float, expired vouchers and prior period adjustments

Gaming Win by Jurisdiction

For Calendar Years 2013 and 2014

(Millions)

Jurisdiction	2013		2014		Year Over Year
	Total Win	% of Total	Total Win	% of Total	% Change
Colorado **	\$748.7	2.9%	\$745.9	2.9%	-0.4%
Iowa	\$1,416.7	5.4%	\$1,396.0	5.5%	-1.5%
Illinois	\$1,552.0	5.9%	\$1,465.4	5.7%	-5.7%
Missouri	\$1,707.6	6.5%	\$1,660.2	6.5%	-2.8%
Louisiana	\$2,444.8	9.3%	\$2,472.5	9.7%	1.1%
Indiana	\$2,331.7	8.9%	\$2,156.7	8.4%	-7.5%
Mississippi	\$2,136.6	8.1%	\$2,067.9	8.1%	-3.2%
New Jersey	\$2,928.4	11.1%	\$2,619.3	10.2%	-10.6%
Nevada	\$11,028.0	41.9%	\$10,978.4	43.0%	-0.4%
Total	\$26,293.8		\$25,560.3		-2.8%



Sources: RubinBrown LLP

** 2013 win reported for Colorado, New Jersey and Nevada this year differs from last year as a result of adjustments

Alton Gaming Company



Argosy Casino Alton

1 Piasa Street - Alton, Illinois 62002 - Telephone: 800 336-7568

Quick Facts

- First Licensed: October 1991
- Renewed: November 2011
- Next Renewal: October 2015
- Waterway: Mississippi River
- Gambling Space: 23,000 sq. ft.
- Employees: 364
- Admissions: 648,883
- Gross Receipts per Admission: \$87.13
- Average Daily Admissions: 1,778
- Authorized gambling positions: 1,103
- Total Gross Receipts: \$56,539,603
- State share of taxes: \$9,644,103
- Local share of taxes: \$3,475,847

Argosy Casino Alton

Calendar Year Comparison

	2013	2014	% Change
Number of Days Operational	359	365	1.67%
Gross Receipts	\$64,253,526	\$56,539,603	-12.01%
Adjusted Gross Receipts (AGR)	\$64,271,282	\$56,539,275	-12.03%
Admissions	753,296	648,883	-13.86%
Gross Receipts Per Admission	\$85.30	\$87.13	2.15%
Gambling Sq. Ft.	23,000	23,000	0.00%
Number of Table Games	14	12	-14.30%
Table Drop	\$17,739,430	\$16,069,834	-9.41%
Table AGR	\$3,390,055	\$2,999,070	-11.53%
AGR/Table/Day	\$674.50	\$684.72	1.52%
Table Game AGR to Drop %	19.1%	18.7%	-2.09%
Number of EGD's	1,008	951	-5.65%
EGD Handle	\$758,125,252	\$651,917,840	-14.01%
EGD AGR	\$60,863,471	\$53,540,533	-12.03%
AGR/EGD/Day	\$168.19	\$154.24	-8.29%
EGD AGR to Handle %	8.0%	8.2%	2.50%
Total Tax	\$15,559,490	\$13,119,950	-15.68%
State Share of Taxes	\$11,592,630	\$9,644,103	-16.81%
Local Share of Taxes	\$3,966,860	\$3,475,847	-12.38%

* Gross Receipts do not reflect chip float, expired vouchers and prior period adjustments

Argosy Casino Alton

Table Games Detail

Table Games	Average # of Units	Total Table Drop	Gross Receipts	AGR to Drop %
Blackjack	2	\$225,177	\$43,516	19.3%
Craps	1	4,753,293	797,325	16.8%
Roulette	1	1,212,750	327,157	27.0%
Mississippi Stud	1	884,342	162,023	18.3%
Blackjack 21+3	5	7,166,573	1,228,553	17.1%
Three Card Poker	2	1,827,699	440,496	24.1%
TOTAL	12	\$16,069,834	\$2,999,070	18.7%

Electronic Games Detail

EGD	Average # of Units	Total EGD Handle	Gross Receipts	AGR to Handle %
\$0.01	630	\$281,196,181	\$33,803,329	12.0%
\$0.05	64	86,848,270	4,525,888	5.2%
\$0.25	135	139,915,197	6,932,143	5.0%
\$0.50	15	5,324,955	382,866	7.2%
\$1	91	105,835,116	6,533,579	6.2%
\$5	12	20,100,410	1,064,846	5.3%
\$10	2	6,530,961	211,332	3.2%
\$25	2	6,166,750	86,550	1.4%
TOTAL	951	\$651,917,840	\$53,540,533	8.2%

Argosy Casino Alton

Month	Adm	Gross Receipts	Taxes Collected		Win Per
	Total	Total	State	Local	
1991 Total	202,938	10,747,204	1,815,019	740,298	52.96
1992 Total	816,731	49,738,494	8,277,505	3,303,656	60.90
1993 Total	1,154,765	60,102,081	10,170,077	4,159,869	52.05
1994 Total	2,604,072	89,073,919	15,965,160	7,057,768	34.21
1995 Total	2,519,604	81,547,899	14,751,789	6,596,999	32.37
1996 Total	2,312,551	72,431,296	13,177,245	5,934,116	31.32
1997 Total	2,052,723	62,321,530	11,400,953	5,168,800	30.36
1998 Total	2,183,444	68,081,277	11,986,946	5,571,817	31.18
1999 Total	1,885,769	84,893,590	15,558,572	6,120,330	45.02
2000 Total	1,701,350	112,070,751	22,854,836	7,310,265	65.87
2001 Total	1,718,223	121,911,560	25,785,295	7,812,735	70.95
2002 Total	1,656,892	118,768,441	27,056,183	7,596,178	71.68
2003 Total	1,461,515	109,083,084	31,830,915	6,915,011	74.64
2004 Total	1,410,579	107,331,901	34,383,139	6,774,624	76.09
2005 Total	1,448,043	112,885,004	29,928,859	7,097,896	77.96
2006 Total	1,469,301	121,690,377	35,727,800	7,554,349	82.82
2007 Total	1,438,188	125,701,589	34,351,895	7,724,803	87.40
2008 Total	1,182,856	90,689,307	19,217,179	5,722,030	76.67
2009 Total	1,158,824	84,206,140	17,351,651	5,369,552	72.67
2010 Total	1,035,058	77,352,471	15,222,818	4,903,732	74.73
2011 Total	943,678	73,064,474	13,919,827	4,598,773	77.43
2012 Total	876,506	70,952,955	13,347,520	4,425,285	80.95
Jan	63,037	5,280,329	654,366	327,183	83.77
Feb	65,222	5,639,214	694,514	347,257	86.46
Mar	71,683	6,615,230	805,204	402,602	92.28
Apr	64,442	5,937,443	722,642	361,321	92.14
May	66,369	5,726,466	1,020,979	352,732	86.28
June	51,111	4,394,125	871,286	270,844	85.97
July	68,280	5,512,560	1,101,370	343,940	80.73
Aug	68,074	5,573,002	1,111,723	346,810	81.87
Sept	60,787	4,950,879	988,122	308,372	81.45
Oct	59,986	4,857,513	1,195,230	302,920	80.98
Nov	59,739	4,930,595	1,229,366	306,381	82.54
Dec	54,566	4,836,170	1,197,828	296,498	88.63
2013 Total	753,296	64,253,526	11,592,630	3,966,860	85.30
Jan	50,690	4,524,191	553,639	276,819	89.25
Feb	50,770	4,603,017	562,066	281,033	90.66
Mar	60,373	5,541,603	674,963	337,481	91.79
Apr	53,632	4,633,673	570,859	285,429	86.40
May	59,677	5,082,626	627,955	313,978	85.17
June	54,887	4,763,872	897,710	293,041	86.79
July	58,005	4,901,713	973,845	303,101	84.51
Aug	55,860	4,931,153	975,039	302,523	88.28
Sept	51,859	4,383,047	870,761	271,014	84.52
Oct	54,299	4,431,643	884,597	276,013	81.62
Nov	48,599	4,243,623	938,306	259,872	87.32
Dec	50,232	4,499,442	1,114,363	275,543	89.57
2014 Total	648,883	56,539,603	9,644,103	3,475,847	87.13

* Gross Receipts do not reflect chip float, expired vouchers and prior period adjustments

Par-A-Dice Gaming Corporation



Par-A-Dice Casino

21 Blackjack Boulevard - East Peoria, Illinois 61611 - Telephone: 800 332-5634

Quick Facts

- First Licensed: February 1992
- Renewed: March 2012
- Next Renewal: March 2016
- Waterway: Illinois River
- Gambling Space: 26,116 sq. ft.
- Employees: 768
- Admissions: 996,909
- Gross Receipts per Admission: \$94.24
- Average Daily Admissions: 2,731
- Authorized gambling positions: 1,200
- Total Gross Receipts: \$93,953,203
- State share of taxes: \$19,728,581
- Local share of taxes: \$5,698,684

Par-A-Dice Casino

Calendar Year Comparison

	2013	2014	% Change
Number of Days Operational	365	365	0.00%
Gross Receipts	\$107,412,644	\$93,953,203	-12.53%
Adjusted Gross Receipts (AGR)	\$107,304,579	\$94,035,504	-12.37%
Admissions	1,094,140	996,909	-8.89%
Gross Receipts Per Admission	\$98.17	\$94.24	-4.00%
Gambling Sq. Ft.	26,116	26,116	0.00%
Number of Table Games	25	27	0.08%
Table Drop	\$77,651,139	\$71,364,419	-8.10%
Table AGR	\$15,313,091	\$13,645,379	-10.89%
AGR/Table/Day	\$1,678.15	\$1,384.61	-17.49%
Table Game AGR to Drop %	19.7%	19.1%	-3.05%
Number of EGD's	1,176	1,100	-6.46%
EGD Handle	\$1,036,863,441	\$890,058,552	-14.16%
EGD AGR	\$92,099,553	\$80,307,824	-12.80%
AGR/EGD/Day	\$214.56	\$200.02	-6.78%
EGD AGR to Handle %	8.9%	9.0%	1.12%
Total Tax	\$30,396,637	\$25,427,265	-16.35%
State Share of Taxes	\$23,937,268	\$19,728,581	-17.58%
Local Share of Taxes	\$6,459,369	\$5,698,684	-11.78%

* Gross Receipts do not reflect chip float, expired vouchers and prior period adjustments

Par-A-Dice Casino

Table Games Detail

Table Games	Average # of Units	Total Table Drop	Gross Receipts	AGR to Drop %
Blackjack	1	\$734,522	\$116,548	15.9%
Craps	2	9,963,607	1,885,351	18.9%
Roulette	2	6,891,550	1,898,745	27.6%
CS Poker	1	1,891,320	264,980	14.0%
Let It Ride Poker	1	869,327	157,685	18.1%
Three Card Poker	1	2,374,815	620,254	26.1%
Mini-Baccarat	1	1,822,502	459,143	25.2%
Mississippi Stud	2	4,987,048	1,206,353	24.2%
Blackjack 21+3	10	37,131,007	6,089,460	16.4%
Poker	5	4,667,281	934,883	20.0%
Texas Holdem	1	31,440	11,977	38.1%
TOTAL	27	\$71,364,419	\$13,645,379	19.1%

Electronic Games Detail

EGD	Average # of Units	Total EGD Handle	Gross Receipts	AGR to Handle %
\$0.01	706	\$416,859,557	\$47,941,519	11.5%
\$0.02	14	3,995,088	487,450	12.2%
\$0.05	79	77,433,397	4,954,145	6.4%
\$0.25	173	150,831,380	10,592,699	7.0%
\$1	98	176,723,475	12,439,030	7.0%
\$5	21	43,358,970	2,534,222	5.8%
\$10	5	9,284,060	550,409	5.9%
\$25	4	11,572,625	808,350	7.0%
TOTAL	1,100	\$890,058,552	\$80,307,824	9.0%

Par-A-Dice Casino

Month	Adm	Gross Receipts	Taxes Collected		Win Per
	Total	Total	State	Local	Adm
1991 Total	105,845	4,195,705	735,201	315,630	39.64
1992 Total	1,104,367	56,345,211	9,556,149	3,921,628	51.02
1993 Total	1,252,023	64,500,277	10,927,065	4,477,037	51.52
1994 Total	1,821,687	84,347,232	14,473,772	6,039,049	46.30
1995 Total	1,989,166	94,626,003	16,183,066	6,720,466	47.57
1996 Total	2,726,266	95,365,644	17,031,113	7,494,548	34.98
1997 Total	2,676,704	96,039,356	17,082,607	7,478,672	35.88
1998 Total	2,654,919	97,845,721	19,632,651	7,550,463	36.85
1999 Total	2,270,728	114,756,553	24,180,395	8,005,673	50.54
2000 Total	1,840,477	129,430,121	28,188,306	8,315,116	70.32
2001 Total	1,942,547	140,836,835	31,685,594	8,983,055	72.50
2002 Total	1,915,602	145,857,221	35,953,653	9,213,774	76.14
2003 Total	1,802,608	138,126,316	44,394,253	8,707,604	76.63
2004 Total	1,622,185	132,641,251	46,427,408	8,253,947	81.77
2005 Total	1,501,320	132,336,534	37,425,439	8,117,498	88.15
2006 Total	1,370,179	130,986,242	44,936,172	7,901,581	95.60
2007 Total	1,372,876	132,757,395	46,510,967	8,011,938	96.70
2008 Total	1,350,245	116,726,216	27,525,600	7,188,723	86.45
2009 Total	1,335,354	114,989,801	26,937,489	7,087,935	86.11
2010 Total	1,307,667	115,252,284	26,967,977	7,073,458	88.14
2011 Total	1,206,094	115,460,022	26,847,667	6,984,629	95.73
2012 Total	1,206,307	116,306,740	27,079,656	7,020,467	96.42
Jan	88,795	8,435,703	1,020,637	510,318	95.00
Feb	91,546	9,217,243	1,104,611	552,306	100.68
Mar	102,407	10,302,743	1,457,889	618,022	100.61
Apr	89,428	9,210,221	1,789,772	549,690	102.99
May	92,850	9,033,997	1,766,510	544,510	97.30
June	91,313	9,075,238	2,034,585	545,122	99.39
July	101,325	9,752,027	2,367,299	582,357	96.25
Aug	97,211	8,977,180	2,217,613	546,809	92.35
Sept	89,651	8,983,859	2,596,746	539,321	100.21
Oct	88,971	8,780,816	2,594,035	528,261	98.69
Nov	85,198	8,467,762	2,506,366	508,698	99.39
Dec	75,445	7,175,855	2,481,205	433,955	95.11
2013 Total	1,094,140	107,412,644	23,937,268	6,459,369	98.17
Jan	72,961	6,927,036	839,660	419,830	94.94
Feb	76,725	7,704,062	926,709	463,355	100.41
Mar	94,809	9,324,518	1,120,530	560,265	98.35
Apr	84,589	8,358,888	1,559,494	503,699	98.82
May	88,615	8,101,101	1,591,395	492,662	91.42
June	82,244	7,593,075	1,497,924	463,226	92.32
July	87,143	8,195,819	1,923,301	497,348	94.05
Aug	88,900	8,325,809	2,053,676	505,761	93.65
Sept	78,237	7,171,412	1,763,156	435,277	91.66
Oct	83,074	7,342,942	2,031,426	451,815	88.39
Nov	77,677	7,445,566	2,203,409	450,051	95.85
Dec	81,935	7,462,975	2,217,901	455,395	91.08
2014 Total	996,909	93,953,203	19,728,581	5,698,684	94.24

* Gross Receipts do not reflect chip float, expired vouchers and prior period adjustments

The Rock Island Boatworks, Inc.



Jumer's Casino & Hotel

777 Jumer Drive - Rock Island, Illinois 61201 - Telephone: 800 477-7747

Quick Facts

- First Licensed: May 1992
- Renewed: May 2011
- Next Renewal: May 2015
- Waterway: Mississippi River
- Gambling Space: 42,000 sq. ft.
- Employees: 523
- Admissions: 1,072,540
- Gross Receipts per Admission: \$71.47
- Average Daily Admissions: 2,938
- Authorized gambling positions: 1,200
- Total Gross Receipts: \$76,655,771
- State share of taxes: \$14,035,641
- Local share of taxes: \$4,906,740

Jumer's Casino & Hotel

Calendar Year Comparison

	2013	2014	% Change
Number of Days Operational	365	365	0.00%
Gross Receipts	\$81,548,137	\$76,655,771	-6.00%
Adjusted Gross Receipts (AGR)	\$81,557,801	\$76,684,002	-5.98%
Admissions	1,202,508	1,072,540	-10.81%
Gross Receipts Per Admission	\$67.82	\$71.47	5.38%
Gambling Sq. Ft.	42,000	42,000	0.00%
Number of Table Games	29	28	-3.45%
Table Drop	\$33,510,040	\$32,980,192	-1.58%
Table AGR	\$6,191,363	\$5,906,081	-4.61%
AGR/Table/Day	\$584.92	\$577.89	-1.20%
Table Game AGR to Drop %	18.5%	17.9%	-3.24%
Number of EGD's	1,091	1,010	-7.42%
EGD Handle	\$874,412,919	\$796,785,244	-8.88%
EGD AGR	\$75,356,774	\$70,749,690	-6.11%
AGR/EGD/Day	\$189.24	\$191.92	1.42%
EGD AGR to Handle %	8.6%	8.9%	3.49%
Total Tax	\$20,786,301	\$18,942,381	-8.87%
State Share of Taxes	\$15,505,903	\$14,035,641	-9.48%
Local Share of Taxes	\$5,280,398	\$4,906,740	-7.08%

* Gross Receipts do not reflect chip float, expired vouchers and prior period adjustments

Jumer's Casino & Hotel

Table Games Detail

Table Games	Average # of Units	Total Table Drop	Gross Receipts	AGR to Drop %
Blackjack	14	\$18,220,168	\$2,676,664	14.7%
Craps	2	5,403,830	1,024,766	19.0%
Roulette	2	2,540,446	622,212	24.5%
Poker	6	2,550,191	674,612	26.5%
Three Card Poker	1	1,019,875	206,362	20.2%
Mississippi Stud	2	2,864,965	610,285	21.3%
Pai Gow Poker	1	380,717	91,180	23.9%
TOTAL	28	\$32,980,192	\$5,906,081	17.9%

Electronic Games Detail

EGD	Average # of Units	Total EGD Handle	Gross Receipts	AGR to Handle %
\$0.01	737	\$465,617,144	\$53,819,466	11.6%
\$0.05	49	43,972,243	2,744,808	6.2%
\$0.25	97	111,668,744	5,354,173	4.8%
\$1	100	135,744,161	6,886,095	5.1%
\$2	3	2,183,452	59,524	2.7%
\$5	18	28,562,730	1,388,013	4.9%
\$10	3	3,525,770	210,711	6.0%
\$25	3	5,511,000	286,900	5.2%
TOTAL	1,010	\$796,785,244	\$70,749,690	8.9%

Jumer's Casino & Hotel

Month	Adm Total	Gross Receipts Total	Taxes Collected State	Local	Win Per Adm
1991 Total	0	0	0	0	0
1992 Total	632,913	24,842,694	4,359,317	1,875,048	39.25
1993 Total	996,278	39,104,701	6,861,983	2,951,513	39.25
1994 Total	945,231	29,810,707	5,416,837	2,435,766	31.54
1995 Total	765,029	18,154,884	3,488,262	1,672,773	23.73
1996 Total	696,793	15,632,765	3,041,708	1,478,431	22.44
1997 Total	668,408	15,977,978	3,065,105	1,467,307	23.90
1998 Total	634,896	14,542,918	2,084,032	1,359,497	22.91
1999 Total	593,924	17,318,896	2,330,321	1,462,123	29.16
2000 Total	759,897	31,080,923	4,161,608	2,310,468	40.90
2001 Total	793,509	35,681,961	4,875,684	2,570,901	44.97
2002 Total	854,047	40,037,470	6,407,415	2,857,850	46.88
2003 Total	780,044	39,493,811	7,425,416	2,755,559	50.63
2004 Total	753,945	38,352,573	7,409,734	2,670,644	50.87
2005 Total	729,262	39,707,550	6,283,649	2,714,536	54.45
2006 Total	693,291	39,117,613	5,664,711	2,649,411	56.42
2007 Total	623,093	35,755,392	5,006,070	2,411,087	57.38
2008 Total	668,993	34,282,665	4,808,247	2,387,351	51.25
2009 Total	1,256,537	70,491,112	12,735,975	4,779,745	56.10
2010 Total	1,382,602	79,406,313	15,102,224	5,354,352	57.43
2011 Total	1,332,379	85,826,485	16,820,280	5,625,634	64.42
2012 Total	1,298,240	87,836,149	17,337,769	5,691,791	67.66
Jan	89,430	6,277,018	715,522	402,476	70.19
Feb	94,337	6,582,210	752,932	423,634	69.77
Mar	110,802	7,923,694	903,116	506,959	71.51
Apr	104,158	7,297,906	1,063,800	468,984	70.07
May	109,113	6,993,373	1,334,002	459,081	64.09
June	110,099	7,312,242	1,389,003	475,500	66.42
July	111,821	7,097,251	1,355,049	467,029	63.47
Aug	108,297	7,223,437	1,710,196	470,074	66.70
Sept	99,845	6,666,737	1,600,255	433,270	66.77
Oct	95,811	6,369,204	1,526,650	413,775	66.48
Nov	89,655	6,199,666	1,532,521	399,800	69.15
Dec	79,140	5,605,399	1,622,857	359,816	70.83
2013 Total	1,202,508	81,548,137	15,505,903	5,280,398	67.82
Jan	75,000	5,498,651	624,752	349,876	73.32
Feb	80,581	6,030,995	683,864	382,222	74.84
Mar	94,288	6,834,485	777,502	435,895	72.49
Apr	92,089	6,713,546	770,008	428,012	72.90
May	93,310	7,055,511	1,328,247	446,149	75.61
June	89,142	6,265,880	1,185,648	402,430	70.29
July	103,111	7,026,110	1,333,015	454,512	68.14
Aug	103,303	7,054,739	1,464,130	456,470	68.29
Sept	85,388	5,972,382	1,429,513	384,083	69.94
Oct	87,554	6,049,146	1,449,404	390,187	69.09
Nov	81,646	5,886,369	1,406,208	375,993	72.10
Dec	87,128	6,267,957	1,583,350	400,911	71.94
2014 Total	1,072,540	76,655,771	14,035,641	4,906,740	71.47

* Gross Receipts do not reflect chip float, expired vouchers and prior period adjustments

Empress Casino-Joliet, Corporation



Hollywood Casino Joliet

777 Hollywood Boulevard - Joliet, Illinois 60436 - Telephone: 888 436-7737

Quick Facts

- First Licensed: July 1992
- Renewed: July 2014
- Next Renewal: July 2018
- Waterway: Des Plaines River
- Gambling Space: 50,000 sq. ft.
- Employees: 589
- Admissions: 1,097,781
- Gross Receipts per Admission: \$111.68
- Average Daily Admissions: 3,016
- Authorized gambling positions: 1,200
- Total Gross Receipts: \$122,595,482
- State share of taxes: \$28,908,520
- Local share of taxes: \$7,226,698

Hollywood Casino Joliet

Calendar Year Comparison

	2013	2014	% Change
Number of Days Operational	365	364	-0.27%
Gross Receipts	\$131,183,854	\$122,595,482	-6.55%
Adjusted Gross Receipts (AGR)	\$131,302,477	\$122,578,335	-6.64%
Admissions	1,237,432	1,097,781	-11.29%
Gross Receipts Per Admission	\$106.01	\$111.68	5.34%
Gambling Sq. Ft.	50,000	50,000	0.00%
Number of Table Games	20	17	-15.00%
Table Drop	\$105,570,813	\$83,132,355	-21.25%
Table AGR	\$18,046,151	\$16,978,562	-5.92%
AGR/Table/Day	\$2,472.08	\$2,743.79	10.99%
Table Game AGR to Drop %	17.1%	20.4%	19.30%
Number of EGD's	1,177	1,165	-1.02%
EGD Handle	\$1,321,492,488	\$1,202,472,926	-9.01%
EGD AGR	\$113,137,703	\$105,616,920	-6.65%
AGR/EGD/Day	\$263.35	\$249.06	-5.43%
EGD AGR to Handle %	8.6%	8.8%	2.33%
Total Tax	\$39,825,725	\$36,135,218	-9.27%
State Share of Taxes	\$32,023,169	\$28,908,520	-9.73%
Local Share of Taxes	\$7,802,556	\$7,226,698	-7.38%

* Gross Receipts do not reflect chip float, expired vouchers and prior period adjustments

Hollywood Casino Joliet

Table Games Detail

Table Games	Average # of Units	Total Table Drop	Gross Receipts	AGR to Drop %
Blackjack	8	\$40,541,026	\$7,403,937	18.3%
Craps	2	15,806,620	2,849,015	18.0%
Roulette	2	8,480,129	2,118,462	25.0%
Poker	1	1,013,121	548,881	54.2%
CS Poker	1	2,565,896	769,355	30.0%
Three Card Poker	1	3,303,393	956,907	29.0%
Mini-Baccarat	1	7,159,182	1,336,966	18.7%
Mississippi Stud	1	4,262,988	995,039	23.3%
TOTAL	17	\$83,132,355	\$16,978,562	20.4%

Electronic Games Detail

EGD	Average # of Units	Total EGD Handle	Gross Receipts	AGR to Handle %
\$0.01	587	\$431,567,834	\$55,208,294	12.8%
\$0.02	145	104,683,273	11,757,986	11.2%
\$0.05	44	57,161,493	4,213,779	7.4%
\$0.10	23	67,558,243	3,476,416	5.1%
\$0.25	177	254,328,129	13,620,874	5.4%
\$0.50	15	13,491,723	1,358,256	10.1%
\$1	154	231,408,871	13,515,747	5.8%
\$5	16	29,604,630	1,685,673	5.7%
\$10	1	8,730,405	481,360	5.5%
\$25	2	2,960,525	202,175	6.8%
\$100	1	977,800	96,360	9.9%
TOTAL	1,165	\$1,202,472,926	\$105,616,920	8.8%

Hollywood Casino Joliet

Month	Adm Total	Gross Receipts Total	Taxes Collected		Win Per Adm
			State	Local	
1991 Total	0	0	0	0	0
1992 Total	1,043,962	78,887,572	11,833,136	4,988,340	75.57
1993 Total	2,155,138	172,859,630	26,972,907	10,798,119	80.21
1994 Total	3,152,962	202,771,211	32,570,820	13,291,523	64.31
1995 Total	3,347,698	202,582,454	33,540,330	13,476,821	60.51
1996 Total	3,361,983	167,884,431	25,442,157	11,756,204	49.94
1997 Total	3,407,122	136,504,791	20,737,037	10,232,361	40.06
1998 Total	3,497,412	153,568,291	37,011,355	11,166,400	43.91
1999 Total	3,006,470	192,760,373	48,321,332	12,642,281	64.12
2000 Total	2,503,020	235,866,424	60,624,123	14,273,204	94.23
2001 Total	2,374,322	260,862,957	68,061,588	15,405,533	109.87
2002 Total	2,111,367	237,769,694	73,242,527	13,994,131	112.61
2003 Total	1,990,689	232,925,884	80,768,383	13,617,406	117.01
2004 Total	1,777,950	228,128,269	89,854,250	13,182,995	128.31
2005 Total	1,923,969	238,197,486	87,173,331	13,833,362	123.81
2006 Total	2,141,534	253,766,059	93,387,301	14,830,045	118.50
2007 Total	2,109,545	240,157,707	84,512,627	14,120,042	113.84
2008 Total	1,678,360	183,930,419	52,566,025	10,876,398	109.59
2009 Total	1,116,396	119,954,225	28,105,729	7,116,061	107.45
2010 Total	1,265,691	143,440,540	36,016,732	8,437,235	113.33
2011 Total	1,411,387	146,401,419	37,214,541	8,736,399	103.73
2012 Total	1,346,101	141,806,184	35,559,920	8,421,904	105.35
Jan	101,152	10,713,824	1,274,377	637,189	105.92
Feb	104,243	11,061,910	1,314,553	657,277	106.12
Mar	119,818	12,851,268	2,248,787	762,831	107.26
Apr	107,425	11,905,280	2,300,552	703,340	110.82
May	112,235	11,941,442	2,740,429	709,560	106.40
June	107,057	11,348,226	2,769,869	675,002	106.00
July	108,112	10,915,130	2,956,375	653,000	100.96
Aug	106,288	10,886,074	3,212,464	651,722	102.42
Sept	96,910	10,160,789	3,077,521	604,619	104.85
Oct	93,188	10,124,957	3,480,595	599,991	108.65
Nov	93,959	9,690,817	3,337,163	578,458	103.14
Dec	87,045	9,584,137	3,310,484	569,567	110.11
2013 Total	1,237,432	131,183,854	32,023,169	7,802,556	106.01
Jan	74,821	8,658,259	1,010,156	505,078	115.72
Feb	83,633	9,365,769	1,104,213	552,107	111.99
Mar	102,603	11,111,848	1,622,190	657,999	108.30
Apr	99,549	11,380,108	2,192,387	669,060	114.32
May	103,053	11,430,496	2,302,139	674,696	110.92
June	94,735	10,280,089	2,501,758	608,577	108.51
July	97,644	10,295,373	2,514,848	613,102	105.44
Aug	98,375	11,479,927	3,227,286	672,185	116.70
Sept	85,110	9,301,553	2,727,548	550,079	109.29
Oct	85,382	9,986,240	3,079,151	584,617	116.96
Nov	83,787	9,048,616	3,107,517	536,086	108.00
Dec	89,089	10,257,204	3,519,327	603,112	115.13
2014 Total	1,097,781	122,595,482	28,908,520	7,226,698	111.68

* Gross Receipts do not reflect chip float, expired vouchers and prior period adjustments

Southern Illinois Riverboat



Harrah's Metropolis Casino & Hotel

100 East Front Street - Metropolis, Illinois 62960 - Telephone: 800 935-7700

Quick Facts

- First Licensed: February, 1993
- Renewed: February 2013
- Next Renewal: February 2017
- Waterway: Ohio River
- Gambling Space: 24,269 sq. ft.
Decrease in gambling square footage
due to casino relocation on 11/19/14
- Employees: 595
- Admissions: 661,844
- Gross Receipts per Admission: \$123.49
- Average Daily Admissions: 1,823
- Authorized gambling positions: 1,200
- Total Gross Receipts: \$81,728,724
- State share of taxes: \$15,693,896
- Local share of taxes: \$4,751,882

Harrah's Metropolis Casino & Hotel

Calendar Year Comparison

	2013	2014	% Change
Number of Days Operational	365	363	-0.55%
Gross Receipts	\$85,361,134	\$81,728,724	-4.26%
Adjusted Gross Receipts (AGR)	\$85,493,213	\$81,800,759	-4.32%
Admissions	672,034	661,844	-1.52%
Gross Receipts Per Admission	\$127.02	\$123.49	-2.78%
Gambling Sq. Ft.	30,985	24,269	-21.68%
Number of Table Games	27	27	0.00%
Table Drop	\$60,426,365	\$59,315,216	-1.84%
Table AGR	\$12,184,019	\$13,397,621	9.96%
AGR/Table/Day	\$1,236.33	\$1,366.96	10.57%
Table Game AGR to Drop %	20.2%	22.6%	11.88%
Number of EGD's	1,129	1,086	-3.81%
EGD Handle	\$664,219,086	\$622,460,085	-6.29%
EGD AGR	\$73,177,115	\$68,331,103	-6.62%
AGR/EGD/Day	\$177.58	\$173.33	-2.39%
EGD AGR to Handle %	11.0%	11.0%	0.00%
Total Tax	\$21,676,396	\$20,445,778	-5.68%
State Share of Taxes	\$16,729,701	\$15,693,896	-6.19%
Local Share of Taxes	\$4,946,695	\$4,751,882	-3.94%

* Gross Receipts do not reflect chip float, expired vouchers and prior period adjustments

** Decrease in gambling square footage due to casino relocation on 11/19/14

Harrah's Metropolis Casino & Hotel

Table Games Detail

Table Games	Average # of Units	Total Table Drop	Gross Receipts	AGR to Drop %
Craps	2	9,631,066	2,203,195	22.9%
Roulette	2	4,038,944	1,159,217	28.7%
Poker	5	2,459,574	457,780	18.6%
Let It Ride Bonus	1	1,974,781	605,697	30.7%
Three Card Poker	2	3,904,347	1,164,175	29.8%
Mini-Baccarat	2	11,060,955	716,303	6.5%
Mississippi Stud	1	129,358	33,260	25.7%
Blackjack 21+3	12	26,116,191	7,057,994	27.0%
TOTAL	27	\$59,315,216	\$13,397,621	22.6%

Electronic Games Detail

EGD	Average # of Units	Total EGD Handle	Gross Receipts	AGR to Handle %
\$0.01	660	\$316,472,169	\$40,251,987	12.7%
\$0.02	14	4,609,705	699,969	15.2%
\$0.05	33	26,964,961	1,760,713	6.5%
\$0.25	184	107,274,584	10,208,783	9.5%
\$0.50	8	3,773,305	222,206	5.9%
\$1	157	131,894,301	12,225,308	9.3%
\$5	22	23,702,010	2,117,418	8.9%
\$10	4	2,911,050	242,653	8.3%
\$25	4	4,858,000	602,066	12.4%
TOTAL	1,086	\$622,460,085	\$68,331,103	11.0%

Harrah's Metropolis Casino & Hotel

Month	Adm Total	Gross Receipts Total	Taxes Collected State	Local	Win Per Adm
1991 Total	0	0	0	0	0
1992 Total	0	0	0	0	0
1993 Total	1,085,773	54,402,452	9,246,141	3,805,896	50.10
1994 Total	1,269,154	70,609,220	11,860,537	4,799,615	55.63
1995 Total	1,986,148	83,395,759	14,495,512	6,155,936	41.99
1996 Total	1,934,106	76,663,166	13,433,581	5,767,264	39.64
1997 Total	2,032,272	76,740,757	13,543,386	5,869,310	37.76
1998 Total	2,108,850	80,631,622	14,774,287	6,141,935	38.23
1999 Total	1,769,953	89,354,089	16,580,981	6,232,159	50.48
2000 Total	1,399,499	108,816,941	21,386,354	6,813,975	77.75
2001 Total	1,432,742	119,783,701	24,836,242	7,416,659	83.60
2002 Total	1,516,767	138,791,382	33,073,258	8,451,441	91.50
2003 Total	1,426,190	134,940,409	42,600,445	8,163,312	94.62
2004 Total	1,346,478	142,926,025	50,021,149	8,469,446	106.15
2005 Total	1,135,553	145,559,724	41,038,281	8,413,434	128.18
2006 Total	1,304,237	160,446,240	51,422,271	9,330,506	123.02
2007 Total	1,421,819	170,054,243	49,934,528	9,921,866	119.60
2008 Total	1,076,085	126,501,001	30,190,409	7,407,894	117.56
2009 Total	1,074,513	117,721,230	27,306,221	6,964,396	109.56
2010 Total	972,488	112,538,682	25,541,410	6,621,939	115.72
2011 Total	766,604	95,750,024	19,647,048	5,559,086	124.90
2012 Total	768,443	97,434,563	20,275,860	5,652,802	126.79
Jan	50,838	6,634,568	767,079	383,540	130.50
Feb	54,166	6,957,909	804,387	402,193	128.46
Mar	65,424	8,165,086	950,387	475,193	124.80
Apr	58,923	7,437,058	1,181,444	431,166	126.22
May	61,657	7,825,837	1,494,133	453,320	126.93
June	61,675	7,509,959	1,439,002	437,576	121.77
July	60,747	7,286,283	1,491,770	425,185	119.94
Aug	60,225	7,613,182	1,839,537	442,244	126.41
Sept	53,097	6,544,416	1,576,270	379,781	123.25
Oct	51,209	6,706,622	1,613,230	386,945	130.97
Nov	51,508	6,840,002	1,875,661	393,956	132.79
Dec	42,565	5,840,212	1,696,801	335,596	137.21
2013 Total	672,034	85,361,134	16,729,701	4,946,695	127.02
Jan	42,410	5,665,119	651,031	325,516	133.58
Feb	47,184	6,128,310	708,939	354,469	129.88
Mar	54,957	7,662,730	875,439	437,720	139.43
Apr	49,506	6,517,369	825,041	375,591	131.65
May	62,461	6,923,325	1,340,312	409,716	110.84
June	52,589	6,738,027	1,283,724	389,316	128.13
July	57,197	6,608,388	1,273,447	388,355	115.54
Aug	60,391	7,340,631	1,584,398	426,888	121.55
Sept	49,285	6,197,406	1,494,235	359,433	125.75
Oct	50,051	6,403,143	1,546,632	371,502	127.93
Nov	67,694	8,024,592	1,938,084	468,293	118.54
Dec	68,119	7,519,684	2,172,614	445,083	110.39
2014 Total	661,844	81,728,724	15,693,896	4,751,882	123.49

* Gross Receipts do not reflect chip float, expired vouchers and prior period adjustments

Des Plaines Development Limited Partnership



Harrah's Joliet Casino & Hotel

151 North Joliet Street - Joliet, Illinois 60432 - Telephone: 800 427-7247

Quick Facts

- First Licensed: August 1993
- Renewed: November 2011
- Next Renewal: September 2015
- Waterway: Des Plaines River
- Gambling Space: 39,000 sq. ft.
- Employees: 880
- Admissions: 1,630,780
- Gross Receipts per Admission: \$121.31
- Average Daily Admissions: 4,468
- Authorized gambling positions: 1,200
- Total Gross Receipts: \$197,822,301
- State share of taxes: \$58,654,892
- Local share of taxes: \$11,584,503

Harrah's Joliet Casino & Hotel

Calendar Year Comparison

	2013	2014	% Change
Number of Days Operational	365	365	0.00%
Gross Receipts	\$202,369,258	\$197,822,301	-2.25%
Adjusted Gross Receipts (AGR)	\$202,425,289	\$199,074,466	-1.66%
Admissions	1,659,301	1,630,780	-1.72%
Gross Receipts Per Admission	\$121.96	\$121.31	-0.53%
Gambling Sq. Ft.	39,000	39,000	0.00%
Number of Table Games	34	37	8.82%
Table Drop	\$163,249,805	\$156,539,616	-4.11%
Table AGR	\$31,439,068	\$28,992,469	-7.78%
AGR/Table/Day	\$2,533.37	\$2,146.80	-15.26%
Table Game AGR to Drop %	19.3%	18.5%	-4.15%
Number of EGD's	1,135	1,086	-4.32%
EGD Handle	\$2,123,683,779	\$2,108,899,925	-0.70%
EGD AGR	\$170,930,190	\$168,829,832	-1.23%
AGR/EGD/Day	\$412.60	\$425.92	3.23%
EGD AGR to Handle %	8.0%	8.0%	0.00%
Total Tax	\$71,815,547	\$70,239,395	-2.19%
State Share of Taxes	\$60,034,982	\$58,654,892	-2.30%
Local Share of Taxes	\$11,780,565	\$11,584,503	-1.66%

* Gross Receipts do not reflect chip float, expired vouchers and prior period adjustments

Harrah's Joliet Casino & Hotel

Table Games Detail

Table Games	Average # of Units	Total Table Drop	Gross Receipts	AGR to Drop %
Blackjack	2	\$17,881,970	\$506,727	2.8%
Craps	3	32,563,752	5,089,649	15.6%
Roulette	2	15,726,592	3,494,031	22.2%
Three Card Poker	3	9,297,338	3,178,908	34.2%
Ultimate Texas Holdem	1	1,314,760	247,565	18.8%
Texas Holdem Bonus Poker	1	1,675,951	446,908	26.7%
Mississippi Stud	2	7,431,337	1,882,315	25.3%
Mini-Baccarat	1	8,168,089	1,995,901	24.4%
Poker	8	5,575,614	1,987,802	35.7%
Blackjack 21+3	12	52,461,814	9,114,552	17.4%
High Card Flush	1	1,628,708	435,306	26.7%
Four Card Poker	1	2,813,691	612,805	21.8%
TOTAL	37	\$156,539,616	\$28,992,469	18.5%

Electronic Games Detail

EGD	Average # of Units	Total EGD Handle	Gross Receipts	AGR to Handle %
\$0.01	388	\$434,088,366	\$54,701,279	12.6%
\$0.02	266	298,570,789	37,388,513	12.5%
\$0.05	37	106,901,483	7,220,727	6.8%
\$0.10	1	2,966,239	148,916	5.0%
\$0.25	206	567,366,988	30,954,754	5.5%
\$0.50	2	3,124,233	417,235	13.4%
\$1	160	598,588,037	33,170,458	5.5%
\$2	1	7,699,400	310,300	4.0%
\$5	21	75,194,520	3,470,477	4.6%
\$10	1	8,714,820	628,673	7.2%
\$25	2	4,417,150	393,800	8.9%
\$100	1	1,267,900	24,700	1.9%
TOTAL	1,086	\$2,108,899,925	\$168,829,832	8.0%

Harrah's Joliet Casino & Hotel

Month	Adm Total	Gross Receipts Total	Taxes Collected State	Local	Win Per Adm
1991 Total	0	0	0	0	0
1992 Total	0	0	0	0	0
1993 Total	984,802	66,504,195	10,960,431	4,310,011	67.53
1994 Total	2,684,777	167,484,237	27,807,413	11,058,989	62.38
1995 Total	3,046,011	201,348,131	33,248,231	13,113,417	66.10
1996 Total	2,879,259	181,568,146	30,114,481	11,957,666	63.06
1997 Total	3,127,340	152,565,997	26,012,240	10,755,640	48.78
1998 Total	3,144,209	162,274,306	39,343,115	11,260,692	51.61
1999 Total	2,834,435	216,590,775	55,345,672	13,669,642	76.41
2000 Total	2,431,006	280,624,566	74,156,303	16,468,556	115.44
2001 Total	2,730,403	300,897,003	80,495,582	17,774,600	110.20
2002 Total	3,102,623	315,107,433	107,596,860	18,864,122	101.56
2003 Total	2,386,938	269,772,752	99,849,343	15,877,132	113.02
2004 Total	1,954,282	272,333,009	116,810,737	15,592,392	139.35
2005 Total	2,215,276	313,441,362	126,425,020	17,888,210	141.49
2006 Total	2,653,667	347,537,343	127,358,407	20,034,342	130.96
2007 Total	2,992,104	381,092,808	143,114,888	22,048,291	127.37
2008 Total	2,570,878	297,674,723	104,764,205	17,459,484	115.79
2009 Total	2,517,489	278,730,833	96,118,118	16,457,283	110.72
2010 Total	2,213,736	246,417,859	80,972,451	14,538,179	111.31
2011 Total	1,885,716	223,714,297	69,921,372	13,074,544	118.64
2012 Total	1,798,785	211,995,581	64,670,074	12,404,064	117.85
Jan	138,939	16,951,677	1,965,647	982,824	122.01
Feb	125,301	14,861,680	2,240,716	867,954	118.61
Mar	154,446	18,663,016	3,611,465	1,091,343	120.84
Apr	144,975	16,654,787	4,041,215	978,589	114.88
May	144,800	19,091,566	5,128,172	1,095,986	131.85
June	134,736	16,880,799	5,067,557	979,328	125.29
July	146,553	16,598,841	5,694,406	977,522	113.26
Aug	150,361	18,995,637	6,475,116	1,100,268	126.33
Sept	139,377	17,435,710	6,417,949	1,012,957	125.10
Oct	131,898	15,213,576	6,354,320	893,213	115.34
Nov	131,835	16,232,898	6,772,861	945,484	123.13
Dec	116,080	14,789,071	6,265,558	855,097	127.40
2013 Total	1,659,301	202,369,258	60,034,982	11,780,565	121.96
Jan	105,551	14,273,291	1,890,181	875,818	135.23
Feb	112,103	14,571,543	2,055,941	841,056	129.98
Mar	148,525	18,814,293	3,589,356	1,089,184	126.67
Apr	141,093	16,512,839	3,939,279	967,140	117.04
May	148,481	17,397,960	4,600,792	1,019,009	117.17
June	134,710	14,048,764	4,145,506	839,453	104.29
July	150,830	17,624,055	5,854,551	1,029,552	116.85
Aug	149,451	17,832,669	6,112,318	1,043,823	119.32
Sept	136,518	16,740,019	5,706,186	972,387	122.62
Oct	134,894	15,938,133	6,567,929	931,507	118.15
Nov	135,229	16,475,202	6,881,471	961,605	121.83
Dec	133,395	17,593,533	7,311,382	1,013,969	131.89
2014 Total	1,630,780	197,822,301	58,654,892	11,584,503	121.31

* Gross Receipts do not reflect chip float, expired vouchers and prior period adjustments

Hollywood Casino-Aurora, Inc.



Hollywood Casino Aurora

49 West Galena Boulevard - Aurora, Illinois 60506 - Telephone: 800 888-7777

Quick Facts

- First Licensed: July 1993
- Renewed: January 2011
- Next Renewal: December 2014
- Waterway: Fox River
- Gambling Space: 41,384 sq. ft.
- Employees: 566
- Admissions: 1,097,301
- Gross Receipts per Admission: \$115.66
- Average Daily Admissions: 3,006
- Authorized gambling positions: 1,200
- Total Gross Receipts: \$126,913,867
- State share of taxes: \$30,304,419
- Local share of taxes: \$7,441,119

Hollywood Casino Aurora

Calendar Year Comparison

	2013	2014	% Change
Number of Days Operational	365	365	0.00%
Gross Receipts	\$141,710,408	\$126,913,867	-10.44%
Adjusted Gross Receipts (AGR)	\$141,872,164	\$126,876,359	-10.57%
Admissions	1,256,773	1,097,301	-12.69%
Gross Receipts Per Admission	\$112.76	\$115.66	2.57%
Gambling Sq. Ft.	41,384	41,384	0.00%
Number of Table Games	27	27	0.00%
Table Drop	\$105,583,756	\$90,605,873	-14.19%
Table AGR	\$18,715,361	\$17,939,497	-4.15%
AGR/Table/Day	\$1,899.07	\$1,820.34	-4.15%
Table Game AGR to Drop %	17.7%	19.8%	11.86%
Number of EGD's	1,161	1,157	-0.34%
EGD Handle	\$1,340,532,076	\$1,165,610,109	-13.05%
EGD AGR	\$122,995,047	\$108,974,370	-11.40%
AGR/EGD/Day	\$290.24	\$258.05	-11.09%
EGD AGR to Handle %	9.2%	9.3%	1.09%
Total Tax	\$43,847,381	\$37,745,538	-13.92%
State Share of Taxes	\$35,497,000	\$30,304,419	-14.63%
Local Share of Taxes	\$8,350,381	\$7,441,119	-10.89%

* Gross Receipts do not reflect chip float, expired vouchers and prior period adjustments

Hollywood Casino Aurora

Table Games Detail

Table Games	Average # of Units	Total Table Drop	Gross Receipts	AGR to Drop %
Blackjack	11	\$43,145,724	\$6,255,170	14.5%
Craps	2	16,337,557	3,337,998	20.4%
Roulette	3	10,833,994	2,513,714	23.2%
Poker	7	7,543,809	2,584,757	34.3%
CS Poker	1	801,116	229,523	28.7%
Three Card Poker	1	3,466,976	962,022	27.7%
Mississippi Stud	1	6,291,760	1,616,471	25.7%
Mini-Baccarat	1	2,184,937	439,842	20.1%
TOTAL	27	\$90,605,873	\$17,939,497	19.8%

Electronic Games Detail

EGD	Average # of Units	Total EGD Handle	Gross Receipts	AGR to Handle %
\$0.01	439	\$334,261,907	\$42,050,590	12.6%
\$0.02	245	173,364,877	20,801,899	12.0%
\$0.05	39	38,154,551	3,613,603	9.5%
\$0.10	15	28,956,890	1,481,463	5.1%
\$0.25	160	218,603,549	14,600,851	6.7%
\$0.50	11	7,334,021	864,527	11.8%
\$1	231	338,656,944	23,548,662	7.0%
\$5	13	23,717,395	1,656,945	7.0%
\$25	3	2,097,075	219,430	10.5%
\$100	1	462,900	136,400	29.5%
TOTAL	1,157	\$1,165,610,109	\$108,974,370	9.3%

Hollywood Casino Aurora

Month	Adm Total	Gross Receipts Total	Taxes Collected State	Local	Win Per Adm
1991 Total	0	0	0	0	0
1992 Total	0	0	0	0	0
1993 Total	994,627	64,139,618	10,615,570	4,201,608	64.49
1994 Total	2,352,803	139,716,301	23,310,248	9,338,618	59.38
1995 Total	2,723,083	146,456,718	24,691,591	10,045,919	53.78
1996 Total	3,180,239	157,210,011	26,761,741	11,040,740	49.43
1997 Total	3,608,393	153,798,896	26,678,227	11,298,338	42.62
1998 Total	3,281,429	157,001,757	37,783,240	11,115,064	47.85
1999 Total	3,074,115	191,045,640	47,918,047	12,631,438	62.15
2000 Total	2,661,334	217,495,111	55,378,114	13,530,798	81.72
2001 Total	2,307,698	232,211,411	59,478,275	13,919,461	100.62
2002 Total	2,638,509	272,601,315	89,472,095	16,259,193	103.32
2003 Total	1,917,314	246,866,057	85,708,126	14,253,797	128.76
2004 Total	1,448,717	229,541,358	89,493,262	12,923,396	158.44
2005 Total	1,547,775	240,996,416	87,792,528	13,606,013	155.71
2006 Total	1,814,179	265,688,563	95,654,615	15,105,581	146.45
2007 Total	1,815,777	272,475,694	91,958,958	15,449,378	150.06
2008 Total	1,627,759	220,000,676	67,921,721	12,632,336	135.16
2009 Total	1,599,896	202,274,745	59,914,492	11,720,974	126.43
2010 Total	1,488,021	180,986,362	51,070,347	10,546,682	121.63
2011 Total	1,498,609	173,306,999	47,895,036	10,157,711	115.65
2012 Total	1,374,454	151,732,529	39,129,295	8,968,877	110.39
Jan	100,295	10,860,640	1,288,111	644,054	108.29
Feb	100,475	11,639,537	1,367,260	683,630	115.85
Mar	130,655	14,183,575	2,563,275	841,110	108.56
Apr	108,439	12,519,230	2,410,311	735,134	115.45
May	116,244	12,890,326	3,105,193	762,608	110.89
June	108,578	12,353,020	2,990,037	724,774	113.77
July	111,788	12,054,813	3,520,254	715,434	107.84
Aug	110,807	12,244,331	3,590,428	723,319	110.50
Sept	94,979	11,041,326	3,725,925	647,777	116.25
Oct	91,349	10,665,574	3,651,145	624,956	116.76
Nov	97,724	10,812,775	3,716,957	639,495	110.65
Dec	85,440	10,445,261	3,568,104	608,090	122.25
2013 Total	1,256,773	141,710,408	35,497,000	8,350,381	112.76
Jan	76,499	8,931,268	1,049,100	524,550	116.75
Feb	82,536	10,047,659	1,170,643	585,321	121.74
Mar	103,569	12,231,929	1,903,074	716,335	118.10
Apr	96,679	11,347,682	2,182,521	665,012	117.37
May	95,714	11,389,465	2,385,295	665,032	118.99
June	93,201	10,608,277	2,529,263	613,837	113.82
July	97,489	11,082,716	2,720,681	652,728	113.68
Aug	98,529	11,108,819	3,252,205	654,010	112.75
Sept	85,379	9,769,996	2,858,943	574,140	114.43
Oct	87,821	9,959,902	3,240,382	586,801	113.41
Nov	87,115	10,113,847	3,464,270	593,275	116.10
Dec	92,770	10,322,307	3,548,042	610,078	111.27
2014 Total	1,097,301	126,913,867	30,304,419	7,441,119	115.66

* Gross Receipts do not reflect chip float, expired vouchers and prior period adjustments

Casino Queen, Inc.



Casino Queen, Inc.

200 South Front Street - East St. Louis, Illinois 62201 - Telephone: 800 777-0777

Quick Facts

- First Licensed: July 1993
- Renewed: July 2013
- Next Renewal: July 2017
- Waterway: Mississippi River
- Gambling Space: 40,000 sq. ft.
- Employees: 626
- Admissions: 1,420,849
- Gross Receipts per Admission: \$77.77
- Average Daily Admissions: 3,893
- Authorized gambling positions: 1,200
- Total Gross Receipts: \$110,501,775
- State share of taxes: \$25,638,489
- Local share of taxes: \$6,947,279

Casino Queen, Inc.

Calendar Year Comparison

	2013	2014	% Change
Number of Days Operational	365	365	0.00%
Gross Receipts	\$124,492,607	\$110,501,775	-11.24%
Adjusted Gross Receipts (AGR)	\$124,576,272	\$110,528,588	-11.28%
Admissions	1,689,422	1,420,849	-15.90%
Gross Receipts Per Admission	\$73.69	\$77.77	5.54%
Gambling Sq. Ft.	40,000	40,000	0.00%
Number of Table Games	22	22	0.00%
Table Drop	\$77,617,215	\$77,702,016	0.11%
Table AGR	\$14,467,127	\$14,832,371	2.52%
AGR/Table/Day	\$1,801.63	\$1,847.12	2.52%
Table Game AGR to Drop %	18.6%	19.1%	2.69%
Number of EGD's	1,193	1,189	-0.34%
EGD Handle	\$1,564,403,882	\$1,321,399,233	-15.53%
EGD AGR	\$110,025,480	\$95,669,404	-13.05%
AGR/EGD/Day	\$252.67	\$220.44	-12.76%
EGD AGR to Handle %	7.0%	7.2%	2.86%
Total Tax	\$38,659,368	\$32,585,768	-15.71%
State Share of Taxes	\$30,741,132	\$25,638,489	-16.60%
Local Share of Taxes	\$7,918,236	\$6,947,279	-12.26%

* Gross Receipts do not reflect chip float, expired vouchers and prior period adjustments

Casino Queen, Inc.

Table Games Detail

Table Games	Average # of Units	Total Table Drop	Gross Receipts	AGR to Drop %
Blackjack	10	\$35,552,304	\$6,216,045	17.5%
Craps	3	18,964,570	4,057,012	21.4%
Roulette	2	6,744,433	1,696,043	25.1%
CS Poker	1	939,679	183,768	19.6%
Three Card Poker	1	4,682,971	642,600	13.7%
Mini-Baccarat	2	6,459,545	962,093	14.9%
Mississippi Stud	1	2,565,931	556,817	21.7%
Ultimate Texas Holdem	1	717,470	196,817	27.4%
Texas Holdem Bonus Poker	1	1,075,113	321,176	29.9%
TOTAL	22	\$77,702,016	\$14,832,371	19.1%

Electronic Games Detail

EGD	Average # of Units	Total EGD Handle	Gross Receipts	AGR to Handle %
\$0.01	656	\$480,592,208	\$55,073,531	11.5%
\$0.05	103	158,947,816	9,136,116	5.7%
\$0.10	14	18,166,524	727,474	4.0%
\$0.25	220	320,678,155	15,194,475	4.7%
\$0.50	23	42,459,405	1,619,700	3.8%
\$1	143	192,321,330	9,642,842	5.0%
\$5	25	84,952,890	3,357,396	4.0%
\$10	1	3,443,880	74,155	2.2%
\$25	2	10,716,875	303,275	2.8%
\$50	2	9,120,150	540,440	5.9%
TOTAL	1,189	\$1,321,399,233	\$95,669,404	7.2%

Casino Queen, Inc.

Month	Adm	Gross Receipts	Taxes Collected		Win Per
	Total	Total	State	Local	Adm
1991 Total	0	0	0	0	0
1992 Total	0	0	0	0	0
1993 Total	1,215,951	51,541,276	8,947,142	3,793,015	42.39
1994 Total	3,671,883	129,785,446	23,139,700	10,161,155	35.35
1995 Total	3,883,179	128,197,800	23,112,849	10,293,069	33.01
1996 Total	4,105,920	128,987,975	23,454,116	10,555,319	31.42
1997 Total	3,607,561	116,590,371	21,096,117	9,437,080	32.32
1998 Total	3,425,733	116,486,988	25,895,396	9,254,006	34.00
1999 Total	2,811,248	138,202,218	31,762,447	9,719,782	49.16
2000 Total	2,109,551	156,880,385	36,681,103	9,954,810	74.37
2001 Total	2,024,046	155,082,587	36,063,984	9,780,703	76.62
2002 Total	2,038,942	156,943,162	40,184,130	9,895,991	76.97
2003 Total	2,032,566	158,033,927	52,995,840	9,926,617	77.75
2004 Total	2,166,506	166,262,134	63,224,264	10,483,145	76.74
2005 Total	2,108,803	168,724,765	54,343,093	10,545,446	80.01
2006 Total	2,103,838	174,279,291	53,995,657	10,820,363	82.84
2007 Total	2,288,232	188,624,732	59,547,076	11,738,204	82.43
2008 Total	2,296,919	160,194,391	44,166,962	10,292,397	69.74
2009 Total	2,242,213	147,539,524	39,343,475	9,623,667	65.80
2010 Total	2,046,112	130,926,774	33,545,533	8,596,621	63.99
2011 Total	1,946,180	130,165,501	32,963,858	8,455,040	66.88
2012 Total	1,866,458	131,187,193	33,251,754	8,427,048	70.29
Jan	130,281	9,567,350	1,218,096	609,048	73.44
Feb	139,168	10,435,628	1,325,760	662,880	74.99
Mar	160,575	12,513,961	2,139,772	786,262	77.93
Apr	149,501	10,852,241	2,193,623	690,822	72.59
May	149,514	11,395,332	2,546,102	722,311	76.22
June	147,036	10,430,125	2,626,791	665,417	70.94
July	147,223	10,458,931	2,681,996	670,293	71.04
Aug	148,584	10,591,169	3,212,991	678,734	71.28
Sept	135,565	9,684,844	2,938,400	620,523	71.44
Oct	132,757	9,356,916	3,108,766	601,128	70.48
Nov	129,306	9,920,739	3,517,801	630,720	76.72
Dec	119,912	9,285,371	3,231,034	580,098	77.43
2013 Total	1,689,422	124,492,607	30,741,132	7,918,236	73.69
Jan	108,087	8,688,666	1,083,555	541,778	80.39
Feb	118,660	9,732,387	1,213,075	606,538	82.02
Mar	134,705	10,767,196	1,658,134	672,240	79.93
Apr	124,859	9,482,863	1,910,171	599,274	75.95
May	126,478	9,417,998	1,900,836	597,301	74.46
June	116,467	8,791,704	2,114,979	555,957	75.49
July	124,152	9,161,639	2,313,032	582,980	73.79
Aug	127,173	9,530,261	2,431,887	604,424	74.94
Sept	113,913	8,456,481	2,549,528	536,041	74.24
Oct	118,033	9,258,695	2,828,228	589,335	78.44
Nov	104,545	8,451,246	2,575,433	518,853	80.84
Dec	103,777	8,762,639	3,059,631	542,558	84.44
2014 Total	1,420,849	110,501,775	25,638,489	6,947,279	77.77

* Gross Receipts do not reflect chip float, expired vouchers and prior period adjustments

Elgin Riverboat Resort



Grand Victoria Casino

250 South Grove Street - Elgin, Illinois 60120 - Telephone: 847 468-7000

Quick Facts

- First Licensed: October 1994
- Renewed: October 2012
- Next Renewal: October 2016
- Waterway: Fox River
- Gambling Space: 29,850 sq. ft.
- Employees: 744
- Admissions: 1,372,095
- Gross Receipts per Admission: \$125.08
- Average Daily Admissions: 3,759
- Authorized gambling positions: 1,200
- Total Gross Receipts: \$171,623,785
- State share of taxes: \$47,081,003
- Local share of taxes: \$9,961,072

Grand Victoria Casino

Calendar Year Comparison

	2013	2014	% Change
Number of Days Operational	365	365	0.00%
Gross Receipts	\$194,272,314	\$171,623,785	-11.66%
Adjusted Gross Receipts (AGR)	\$194,325,617	\$171,779,533	-11.60%
Admissions	1,610,241	1,372,095	-14.79%
Gross Receipts Per Admission	\$120.65	\$125.08	3.67%
Gambling Sq. Ft.	29,850	29,850	0.00%
Number of Table Games	29	32	10.34%
Table Drop	\$162,879,389	\$155,990,094	-4.23%
Table AGR	\$32,305,528	\$30,904,163	-4.34%
AGR/Table/Day	\$3,052.01	\$2,645.90	-13.31%
Table Game AGR to Drop %	19.8%	19.8%	0.00%
Number of EGD's	1,161	1,143	-1.55%
EGD Handle	\$1,865,096,428	\$1,573,866,777	-15.61%
EGD AGR	\$161,966,786	\$140,719,622	-13.12%
AGR/EGD/Day	\$382.21	\$337.30	-11.75%
EGD AGR to Handle %	8.7%	8.9%	2.30%
Total Tax	\$67,902,251	\$57,042,075	-15.99%
State Share of Taxes	\$56,575,729	\$47,081,003	-16.78%
Local Share of Taxes	\$11,326,522	\$9,961,072	-12.06%

* Gross Receipts do not reflect chip float, expired vouchers and prior period adjustments

Grand Victoria Casino

Table Games Detail

Table Games	Average # of Units	Total Table Drop	Gross Receipts	AGR to Drop %
Blackjack	12	\$69,576,057	\$10,483,867	15.1%
Craps	2	24,046,868	4,792,791	19.9%
Roulette	3	18,972,324	4,356,810	23.0%
Poker	9	19,020,669	5,849,354	30.8%
Three Card Poker	2	8,290,478	1,881,659	22.7%
Mississippi Stud	2	9,059,320	2,229,072	24.6%
Mini Baccarat	2	7,024,378	1,310,610	18.7%
TOTAL	32	\$155,990,094	\$30,904,163	19.8%

Electronic Games Detail

EGD	Average # of Units	Total EGD Handle	Gross Receipts	AGR to Handle %
\$0.01	296	\$258,005,688	\$33,097,839	12.8%
\$0.02	280	236,937,403	29,902,611	12.6%
\$0.05	47	67,616,974	6,042,763	8.9%
\$0.10	3	2,144,716	340,991	15.9%
\$0.25	109	207,160,696	14,023,891	6.8%
\$0.50	21	13,532,037	1,664,863	12.3%
\$1	346	648,311,013	48,062,088	7.4%
\$5	29	110,154,645	5,703,231	5.2%
\$10	4	14,145,630	825,200	5.8%
\$25	6	11,710,975	854,445	7.3%
\$100	2	4,147,000	201,700	4.9%
TOTAL	1,143	\$1,573,866,777	\$140,719,622	8.9%

Grand Victoria Casino

Month	Adm	Gross Receipts	Taxes Collected		Win Per
	Total	Total	State	Local	
1991 Total	0	0	0	0	0
1992 Total	0	0	0	0	0
1993 Total	0	0	0	0	0
1994 Total	908,887	36,545,739	6,390,748	2,736,174	40.21
1995 Total	3,816,024	204,092,886	34,429,957	14,020,668	53.48
1996 Total	3,869,130	233,247,096	38,856,194	15,531,485	60.28
1997 Total	3,748,863	243,362,847	40,253,290	15,917,005	64.92
1998 Total	3,882,926	256,318,720	68,271,058	16,697,614	66.01
1999 Total	3,745,047	318,009,097	86,667,370	19,648,768	84.91
2000 Total	3,608,805	385,739,139	106,898,154	22,907,030	106.89
2001 Total	3,484,791	416,690,151	115,946,654	24,311,768	119.57
2002 Total	2,986,833	405,674,718	142,716,311	23,266,708	135.82
2003 Total	2,799,688	380,701,240	172,224,874	21,844,186	135.98
2004 Total	2,850,379	400,474,595	203,666,136	22,880,350	140.50
2005 Total	2,713,165	407,063,503	174,052,703	23,066,119	150.03
2006 Total	2,630,134	430,016,681	209,734,417	24,132,235	163.50
2007 Total	2,463,803	436,767,202	203,220,085	24,301,668	177.27
2008 Total	2,184,959	338,727,854	122,488,290	19,128,666	155.03
2009 Total	2,117,538	293,015,482	101,697,095	16,766,095	138.38
2010 Total	2,123,039	287,100,612	99,081,960	16,479,803	135.23
2011 Total	1,865,402	257,132,464	84,944,844	14,730,214	137.84
2012 Total	1,653,907	212,393,609	64,527,872	12,275,581	128.42
Jan	126,361	16,131,815	1,866,625	933,312	127.66
Feb	119,371	14,565,897	2,123,270	847,685	122.02
Mar	155,901	19,659,864	3,770,976	1,138,992	126.10
Apr	146,103	17,598,143	4,255,668	1,026,872	120.45
May	146,096	17,675,252	4,800,804	1,029,639	120.98
June	142,120	16,784,892	5,017,077	980,608	118.10
July	153,623	17,098,020	5,864,548	1,008,593	111.30
Aug	140,580	17,082,372	5,835,630	995,114	121.51
Sept	124,675	14,880,399	5,208,886	870,118	119.35
Oct	121,514	14,239,981	5,931,128	832,527	117.19
Nov	122,109	14,880,813	6,208,099	867,594	121.86
Dec	111,788	13,674,866	5,693,018	795,468	122.33
2013 Total	1,610,241	194,272,314	56,575,729	11,326,522	120.65
Jan	100,173	12,911,816	1,491,738	745,869	128.90
Feb	110,760	14,404,055	1,836,822	831,262	130.05
Mar	127,936	16,713,954	3,192,160	966,875	130.64
Apr	117,339	15,027,224	3,311,874	866,685	128.07
May	123,388	14,982,154	3,633,373	875,965	121.42
June	116,139	14,224,634	4,084,147	824,286	122.48
July	117,204	14,656,737	4,404,722	848,759	125.05
Aug	120,289	14,546,424	4,976,498	848,892	120.93
Sept	106,224	13,267,057	4,532,114	770,789	124.90
Oct	112,804	13,976,714	4,790,915	815,159	123.90
Nov	105,282	12,931,553	4,999,997	752,283	122.83
Dec	114,557	13,981,463	5,826,643	814,248	122.05
2014 Total	1,372,095	171,623,785	47,081,003	9,961,072	125.08

* Gross Receipts do not reflect chip float, expired vouchers and prior period adjustments

Midwest Gaming & Entertainment, LLC



Rivers Casino

3000 South River Road - Des Plaines, Illinois 60018 - Telephone: 847 531-7756

Quick Facts

- First Licensed: August 2011
- Renewed: August 2012
- Next Renewal: August 2016
- Waterway: Des Plaines River
- Gambling Space: 43,687 sq. ft.
- Employees: 1,478
- Admissions: 3,519,071
- Gross Receipts per Admission: \$120.79
- Average Daily Admissions: 9,641
- Authorized gambling positions: 1,200
- Total Gross Receipts: \$425,083,742
- State share of taxes: \$164,124,398
- Local share of taxes: \$24,792,544

Rivers Casino

Calendar Year Comparison

	2013	2014	% Change
Number of Days Operational	365	365	0.00%
Gross Receipts	\$418,707,890	\$425,083,742	1.52%
Adjusted Gross Receipts (AGR)	\$418,910,496	\$425,469,457	1.57%
Admissions	3,716,598	3,519,071	-5.31%
Gross Receipts Per Admission	\$112.66	\$120.79	7.22%
Gambling Sq. Ft.	43,687	43,687	0.00%
Number of Table Games	48	49	2.08%
Table Drop	\$702,884,660	\$737,887,130	4.98%
Table AGR	\$115,794,635	\$125,265,144	8.18%
AGR/Table/Day	\$6,609.28	\$7,003.92	5.97%
Table Game AGR to Drop %	16.5%	17.0%	3.03%
Number of EGD's	1,044	1,039	-0.48%
EGD Handle	\$2,977,174,171	\$2,920,082,526	-1.92%
EGD AGR	\$302,913,255	\$299,818,598	-1.02%
AGR/EGD/Day	\$794.92	\$790.59	-0.54%
EGD AGR to Handle %	10.2%	10.3%	0.98%
Total Tax	\$186,230,042	\$188,916,942	1.44%
State Share of Taxes	\$161,567,919	\$164,124,398	1.58%
Local Share of Taxes	\$24,662,123	\$24,792,544	0.53%

* Gross Receipts do not reflect chip float, expired vouchers and prior period adjustments

Rivers Casino

Table Games Detail

Table Games	Average # of Units	Total Table Drop	Adjusted Gross Receipts	AGR to Drop %
Blackjack	7	\$113,274,347	\$14,309,896	12.6%
Craps	4	90,307,958	17,470,289	19.3%
Roulette	5	79,267,367	18,045,116	22.8%
CS Poker	1	7,472,131	1,526,391	20.4%
Three Card Poker	2	13,214,961	3,518,589	26.6%
Mini-Baccarat	6	128,557,721	20,021,048	15.6%
Baccarat	5	72,719,025	11,028,617	15.2%
Four Card Poker	1	506,107	84,192	16.6%
Texas Holdem Bonus Poker	2	14,268,555	3,021,698	21.2%
Mississippi Stud	2	18,458,725	4,761,567	25.8%
Blackjack 21+3	12	188,670,442	28,942,344	15.3%
Spanish 21	1	6,216,410	1,271,682	20.5%
Pai Gow Poker	1	4,953,381	1,263,715	25.5%
TOTAL	49	\$737,887,130	\$125,265,144	17.0%

Electronic Games Detail

EGD	Average # of Units	Total EGD Handle	Adjusted Gross Receipts	AGR to Handle %
\$0.01	195	\$328,004,273	\$44,799,475	13.7%
\$0.02	384	757,677,646	100,139,076	13.2%
\$0.05	45	105,295,707	13,138,744	12.5%
\$0.25	134	524,660,616	37,024,552	7.1%
\$1	249	1,028,480,599	90,072,779	8.8%
\$5	27	152,365,585	12,493,885	8.2%
\$25	4	16,852,800	1,523,541	9.0%
\$100	1	6,745,300	626,546	9.3%
TOTAL	1,039	\$2,920,082,526	\$299,818,598	10.3%

Rivers Casino

Month	Adm	Gross Receipts		Taxes Collected		Win Per
	Total	Total	State	Local	Adm	
2010 Total	0	0	0	0	0.00	
2011 Total	1,945,895	176,778,835	50,506,359	10,819,591	90.85	
2012 Total	3,968,668	416,522,382	161,066,426	24,802,456	104.95	
Jan	286,077	32,288,118	4,359,875	1,903,997	112.87	
Feb	275,056	33,389,187	7,176,580	1,943,622	121.39	
Mar	325,848	38,179,870	10,873,318	2,233,332	117.17	
Apr	304,002	35,090,906	12,008,424	2,057,913	115.43	
May	327,510	35,158,607	13,938,162	2,091,425	107.35	
June	307,201	35,310,618	15,200,637	2,071,028	114.94	
July	320,555	35,343,094	16,520,986	2,084,986	110.26	
Aug	325,472	35,966,276	16,863,318	2,126,847	110.50	
Sept	320,551	35,109,448	16,492,132	2,081,777	109.53	
Oct	326,030	36,693,339	17,082,571	2,151,642	112.55	
Nov	307,287	32,764,781	15,386,776	1,948,643	106.63	
Dec	291,009	33,413,646	15,665,140	1,966,911	114.82	
2013 Total	3,716,598	418,707,890	161,567,919	24,662,123	112.66	
Jan	242,373	30,397,532	3,929,842	1,762,401	125.42	
Feb	267,997	32,708,760	6,914,392	1,903,190	122.05	
Mar	318,352	39,487,192	11,083,786	2,300,912	124.04	
Apr	305,326	37,404,768	12,837,018	2,186,305	122.51	
May	313,085	37,575,531	15,023,152	2,202,940	120.02	
June	295,486	33,954,719	14,763,967	1,991,528	114.91	
July	312,789	35,294,784	16,482,785	2,074,701	112.84	
Aug	314,295	35,860,255	16,666,912	2,096,331	114.10	
Sept	289,757	36,871,768	17,196,331	2,136,070	127.25	
Oct	288,043	36,302,590	16,967,907	2,109,357	126.03	
Nov	279,750	34,102,293	15,907,595	1,985,094	121.90	
Dec	291,818	35,123,550	16,350,711	2,043,715	120.36	
2014 Total	3,519,071	425,083,742	164,124,398	24,792,544	120.79	

* Gross Receipts do not reflect chip float, expired vouchers and prior period adjustments

** Des Plaines Rivers Casino Opened July 18, 2011

Glossary of Terms

Adjusted Gross Receipts (AGR)

Gross gaming receipts, less winnings paid to wagerers. Also referred to as casino win.

Admissions

Prior to dockside gambling in June 1999, admissions were the sum of both turnstile count and passengers remaining on board for each subsequent excursion. On June 26, 1999, dock side gambling began in Illinois. On that date the definition of admissions changed to reflect the number of patrons entering the casinos.

Education Assistance Fund (EAF)

A fund of the State of Illinois into which state-retained gaming taxes are deposited.

Electronic Gaming Device (EGD)

A video gaming machine or reel type of machine commonly referred to as a slot machine.

EGD Drop

The total face value of tokens or representations of tokens collected from the drop bucket and U.S. currency collected from the bill validator drop box.

EGD Handle

The total amount wagered on an electronic gaming device.

EGD Win Percent

The percentage of the total EGD handle that is retained as winnings by the casino. (Board rules provide that EGDs must pay out at least 80 percent and no more than 100 percent of amounts wagered in those machines. The amount remaining after these payouts is the casino win and is used to figure the actual electronic gaming device win percentage.)

Gaming Positions

Each riverboat casino is allowed up to 1,200 gaming positions. The formula developed by the Board to figure those positions are:

Electronic gaming devices — 90 percent of the total number of devices available for play

Craps — 10 positions for each craps table

Other table games – 5 positions for each table

Keno – 5 gaming positions

Slot Machine

The common phrase to describe an Electronic Gaming Device.

Total Table Drop

The total amount of cash or cash equivalents contained in the drop box for chips purchased at a table game. This does not reflect the total dollars wagered at the gaming tables. Individuals playing table games may be betting with winnings for which there is no accurate means of determining, or accounting for, actual dollars wagered.

Illinois Gaming Board

Approved Games

Baccarat/Mini-Baccarat

- Dragon Bonus

Big Six

Blackjack (Twenty-one)

- Alternative Blackjack
- Casino Surrender
- Double Exposure 21
- House Money
- Lucky Ladies
- Lucky Lucky
- Perfect Pairs
- 21+3 Classic
- 21+3 Classic—TOP 3
- 21+3 Xtreme
- Bet the Set 21

Caribbean Draw Poker

Caribbean Stud Poker

Craps

- Bonus Craps
- Craps for Cash Option
- Fire Bet

Four Card Poker

Give-away

High Card Flush

Let It Ride Poker

Let It Ride Bonus

- 3 Card Bonus

Mississippi Stud

- 3 Card Bonus

Multi-Action Blackjack

Pai Gow Poker

- Fortune Pai Gow Poker

Poker

- Poker-Bad Beat

Red Dog

Roulette

Royal Match 21

Sic Bo

Single Hand 21

Spanish 21

Three Card Poker

- Three Card Poker - 6 Card Bonus
- Three Card Poker - Progressive

Texas Hold' em Bonus Poker

Twenty-One Super Bucks

Ultimate Texas Hold' em

War

Wild Aruba Stud

Electronic Gaming Devices

- Single and Multiple Position, Multi-Game Video Electronic Gaming Device
- Single and Multiple Position, Reel-Type Electronic Gaming Device
- Single and Multiple Position, Single-Game Video Electronic Gaming Device

Illinois Licensed Suppliers

AGS Illinois, LLLP

905 Irving Park Road
Itasca, Illinois 60143
Supplier: Electronic gaming devices

Ainsworth Game Technology, Ltd.

10 Holker Street
Newington, NSW Australia 2127
Supplier: Electronic gaming devices

American Gaming & Electronics, Inc.

9500 West 55th Street, Suite A
McCook, Illinois 60525
Supplier: Accessory gaming equipment

Aristocrat Technologies, Inc.

7230 Amigo Street
Las Vegas, Nevada 89119
Supplier: Electronic gaming devices

Bally Gaming, Inc.

6601 South Bermuda Road
Las Vegas, Nevada 89119
Supplier: Electronic gaming devices

Cummins-Allison Corporation

891 Feehanville Drive
Mount Prospect, Illinois 60056
Supplier: Kiosks

Data Financial, Inc.

1100 Glen Oaks Lane
Mequon, Wisconsin 53092
Supplier: Kiosks, cards, dice, layouts

Ditronics Financial Services, LLC

7699 West Post Road
Las Vegas, Nevada 89113
Supplier: Kiosks

Gaming Partners International USA, Inc.

aka: **Paul-Son Gaming Suppliers, Inc.**
1700 Industrial Road
Las Vegas, Nevada 89102
Supplier: Table games, dice, chips, cards

GEMACO, Inc.

2925 North Seven Highway
Blue Springs, Missouri 64014
Supplier: Playing cards, chips, layouts

Genesis Gaming Solutions, Inc.

25003 Pitkin Road Suite C100
Spring, Texas 77386
Supplier: Bravo pit/poker system

Global Cash Access, Inc.

7250 S Tenaya Way, Suite 100
Las Vegas, Nevada 89118
Supplier: Kiosks

GLP Capital, L.P.

825 Berkshire Boulevard, Suite 200
Wyomissing, Pennsylvania 19610
Supplier: Gaming facilities

GTECH Canada ULC

328 Urquhart Avenue
Moncton, New Brunswick
Canada E1H 2G6
Supplier: Electronic gaming devices

GTECH USA, LLC

6757 Spencer Street
Las Vegas, Nevada 89119
Supplier: Electronic gaming devices

Happ Controls, Inc.

1743 Linneman Road
Mount Prospect, Illinois 60056
Supplier: Accessory gaming equipment

House Advantage, LLC

1140 North Town Center Drive, Suite 140
Las Vegas, Nevada 89144
Supplier: Kiosks

IGT

6355 South Buffalo Drive
Las Vegas, Nevada 89113
Supplier: Electronic gaming devices

Incredible Technologies, Inc.

3333 North Kennicott Avenue
Arlington Heights, Illinois 60004
Supplier: Electronic gaming devices

JCM American Corporation

925 Pilot Road
Las Vegas, Nevada 89119
Supplier: Bill validators

Konami Gaming, Inc.

585 Trade Center Drive
Las Vegas, Nevada 89119
Supplier: Electronic gaming devices, casino management system

Micro Gaming Technologies, Inc.

4820 Quality Court
Las Vegas, Nevada 89103
Supplier: Custom gaming promotional software

Midwest Game Supply Company

1119 North Jefferson, P.O.Box 20
Kearney, Missouri 64060
Supplier: Dice, table games, layouts

Multimedia Games, Inc.

206 Wild Basin Road South, Bldg B
Austin, Texas 78746
Supplier: Electronic gaming devices

Novomatic Americas Sales LLC

508 South Military Trail
Deerfield Beach, Florida 33442
Supplier: Electronic gaming devices

NRT Technology Corporation

10 Compass Court
Toronto, Ontario
Canada M1S 5R3
Supplier: Kiosks

Patriot Gaming & Electronics, Inc.

217 North Lindberg Avenue
Griffith, Indiana 46319
Supplier: Accessory gaming equipment

SHFL entertainment, Inc.

6650 El Camino Drive
Las Vegas, Nevada 89118
Supplier: Shuffle machines, electronic gaming devices, layouts

U.S. Playing Card Company

300 Gap Way
Erlanger, Kentucky 41018
Supplier: Playing cards, dice

WMS Gaming, Inc.

800 South Northpoint Boulevard
Waukegan, Illinois 60085
Supplier: Electronic gaming devices

The background of the page features a large, faded seal of the State of Illinois. The seal is circular with a yellow border. Inside the border, the words "THE STATE OF ILLINOIS" are written in a circular path. In the center of the seal is an eagle with its wings spread, perched on a shield. The shield has a blue top section with white stars and a red and white striped bottom section. Above the eagle's head is a banner with the word "UNION". To the left of the eagle's head is a banner with the word "NATIONAL". Below the eagle's head is a banner with the word "SOVEREIGNTY". At the bottom of the seal, the date "AUG. 26TH 1818" is written.

Illinois Gaming Board Executive Staff

Mark Ostrowski
Administrator

Emily Mattison
General Counsel

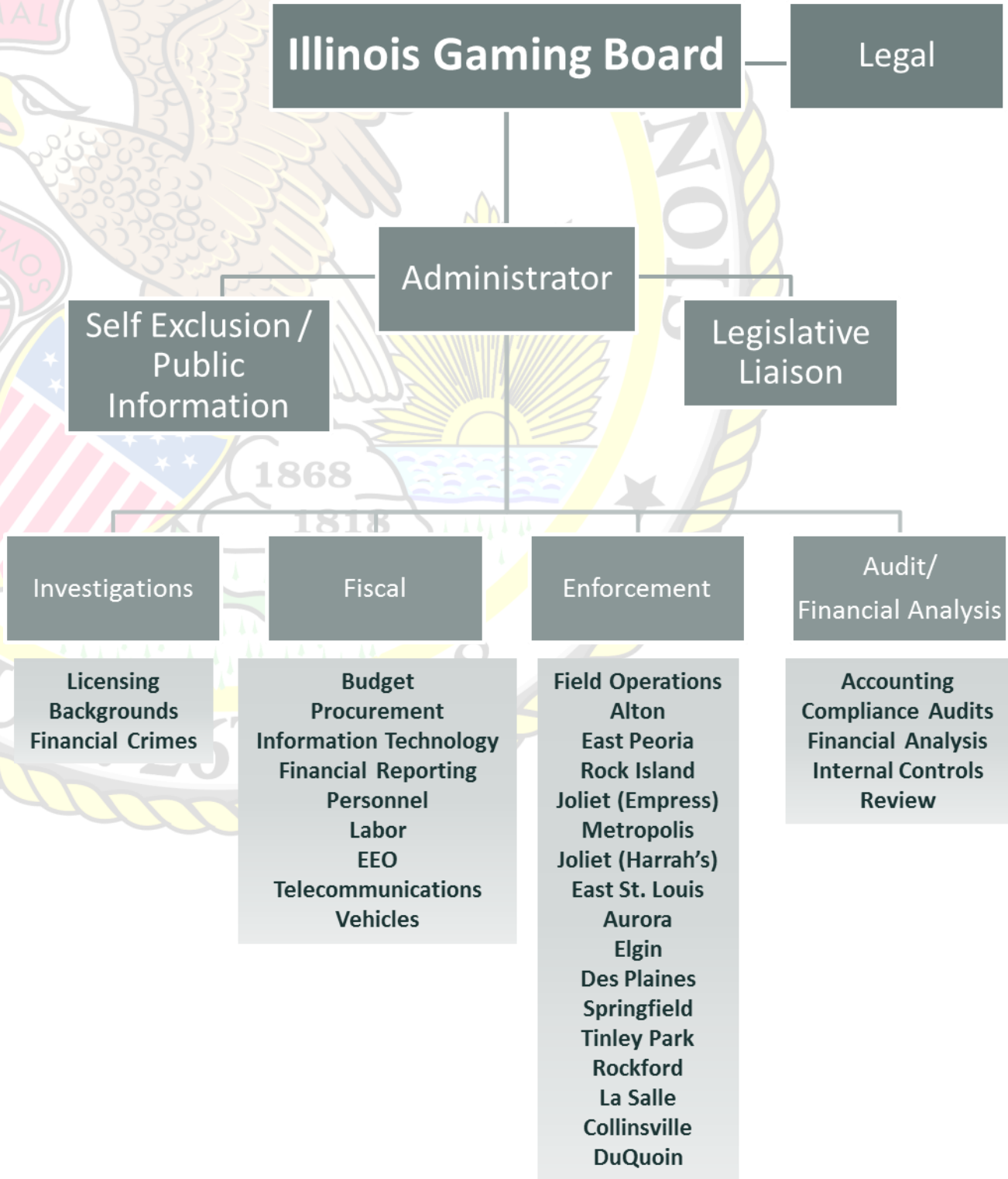
Isaiah Vega
Deputy Administrator, Enforcement

Scott Deubel
Deputy Administrator, Investigations

Douglas Bybee
Deputy Administrator, Audit and Financial Analysis

Mark Lewis
Chief Fiscal Officer

Illinois Gaming Board Organizational Chart



Illinois Gaming Board

Fiscal Year Budget

Line Item	FY 11 Actual	FY 12 Actual	FY 13 Actual	FY 14 Actual	FY 15 Estimated
Operations:					
Personal Services	\$6,766,788	\$7,610,227	\$8,348,605	\$9,339,952	\$12,402,000
Retirement Pick-Up	1,887,845	2,604,276	3,174,530	3,769,168	5,251,000
Social Security	256,832	297,758	318,297	336,015	551,000
Medicare Group Ins.	1,259,806	1,510,241	2,160,419	2,100,462	3,151,000
Contractual	594,389	344,954	401,110	581,927	500,000
Travel	55,950	45,523	47,274	48,401	60,000
Commodities	14,884	18,301	12,884	9,505	15,000
Printing	3,372	2,404	924	3,131	2,500
Equipment	3,570	9,620	8,974	1,586	50,000
EDP	103,083	98,673	80,626	112,798	138,000
Telecommunications	375,617	265,067	265,318	244,184	350,000
Operation of Autos	82,688	80,777	92,599	74,678	100,000
Illinois State Police Expenses	12,966,794	13,793,064	11,997,653	12,181,860	15,102,500
Video Poker	5,282,782	8,645,358	15,514,312	16,451,836	22,164,000
Shared Services	266,662	327,161	323,744	277,040	432,000
Total Operations	\$29,921,062	\$35,653,404	\$42,747,269	\$45,532,543	\$60,269,000
Education Funding	324,200,000	340,027,000	344,611,000	320,631,000	320,000,000
Local Distributions	80,986,186	106,280,528	103,555,610	96,822,602	110,000,000
Refunds	0	0	0	0	50,000
Grand Total	\$435,107,248	\$481,960,932	\$490,913,879	\$462,986,145	\$490,319,000

The background of the page features a large, faded seal of the State of Illinois. The seal is circular with a rope-like border. Inside the border, the words "THE STATE OF ILLINOIS" are written in a circular path. At the bottom, it says "AUG. 26TH 1818". The center of the seal depicts an eagle with its wings spread, perched on a shield with red and white stripes and a blue top section with white stars. To the right of the eagle is a rising sun over a body of water. Below the sun, the years "1868" and "1818" are inscribed. A banner above the eagle reads "NATIONAL UNION", and another banner to the left reads "SOVEREIGNTY, NATIONALITY".

Credits

Director Self Exclusion Program - Gene O'Shea

Legislative Liaison - Caleb Melamed

Revenue Accounting Manager - Elizabeth Engelman

Project Coordinator - Julie Stoecker

Graphic Design / Layout - Michael Mueller

Illinois Gaming Board — 2014 Annual Report

Illinois Gaming Board

160 North LaSalle Street, Suite 300
Chicago, Illinois 60601
312 814 – 4700

801 South Seventh Street
Suite 400 - South
Springfield, Illinois 62703
217 524 – 0226